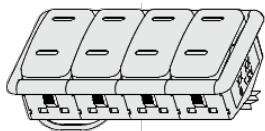




Overview



Description

A programmable **Electronic CAN Button Panel** designed to operate within a Controller Area Network (CAN). The panel can be custom-configured with four to eight independently controlled illuminated switches. Interchangeable cams allow 1, 2 or 3 positions and detent or momentary action. The cams are designed on a simple snap-in platform that allows for easy and economical assembly and modification. The LEDs can be configured in up to 8 colors with optional laser-etched icons. Dust shield optional. HF-Impulse configuration software can be downloaded at www.hydraforce.com/electronics.

Operation

The panel utilizes a patented system of optical interrupters to create a switch output with no electrical contacts within the switch. Cams are interchangeable and include a choice of several position and detent options. Status of each switch position and the display of each LED is communicated through CAN messaging.

Ratings

Electrical Parameters

Operating voltage	10 to 32 Vdc
Operating current limit	75 to 350 mA
	1.5 mA - Note: Sleep

Properties

Housing material	UL 94V-0 polycarbonate	- Note: Body
	Lexan	- Note: Actuator
Unit weight	0.17 kg (0.375 lb)	
Mechanical life	250 000 cycles	

Environmental Ratings

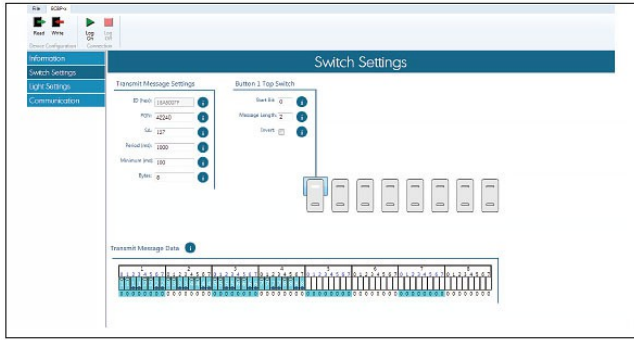
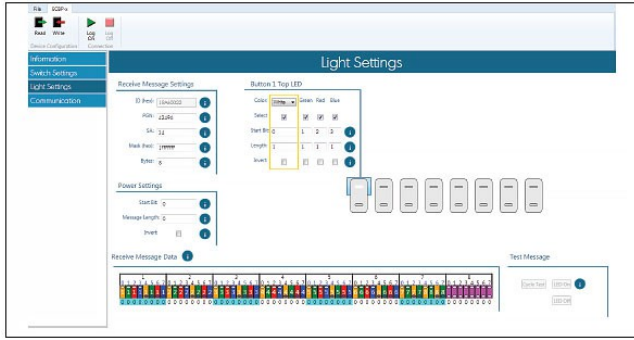
Operating and storage temperature	-40 to 85 °C (-40 to 185 °F)	
Operating and storage temperature	-40 to 85 °C (-40 to 185 °F)	
Humidity	to 100% RH	- Note: Condensing
Ingress protection	IP68	

Testing

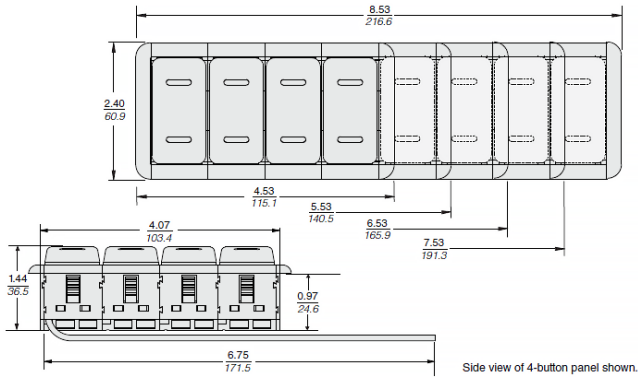
Mechanical shock	Mil. Std. 202 Method 213 Test Condition 1
Mechanical shock	Mil. Std. 202 Method 213 Test Condition 1
Thermal shock	Mil. Std. 202 Method 107G Test Condition A-1, 5 cycles
Salt spray	Mil. Std. 202G, Method 101E, Test Condition B, 48 hours



Configuration Example



Dimensions



Installation

Mounting Type: Panel Mount

Panel Cutout (4) switches: 48.3 x 107.2 mm (1.9 x 4.22 in)

For each additional switch (up to 8): add 25.4 mm (1.0 in) to length.

Panel Thickness: 8.9 mm (0.35 in) Maximum



To Order

Assemblies

Part Number	Description
4000384	ECBP-4, 4-Button CAN Rocker Switch Panel
4000385	ECBP-5, 5-Button CAN Rocker Switch Panel
4000386	ECBP-6, 6-Button CAN Rocker Switch Panel
4000387	ECBP-7, 7-Button CAN Rocker Switch Panel
4000388	ECBP-8, 8-Button CAN Rocker Switch Panel

Accessories

Part Number	Description
4000389	CAM 2-Position, Momentary OFF-(ON)
4000390	CAM 2-Position, Detent OFF-ON
4000391	CAM 3-Position, Momentary (ON)-OFF-(ON)
4000392	CAM 3-Position, Detent ON-OFF-ON
4000393	CAM 3-Position, Momentary/Detent (ON)-OFF-ON
Part Number	Fixed Actuator, Non-Etched
4000395	Fixed Actuator, Slot-Etched
4000396	Rocker Actuator, Non-Etched
4000397	Rocker Actuator, Slot-Etched
4000312	Gasket, 4-Button CAN Rocker Switch Panel
4000313	Gasket, 5-Button CAN Rocker Switch Panel
4000314	Gasket, 6-Button CAN Rocker Switch Panel
4000315	Gasket, 7-Button CAN Rocker Switch Panel
4000316	Gasket, 8-Button CAN Rocker Switch Panel
4000398	Icon Kit, CAN Rocker Switch Panel
4000371	USB-CAN Adaptor: Kvaser Leaf Lite HS