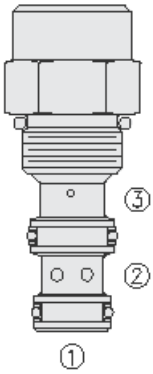




Overview



Description

The EP08-35 is a screw-in, cartridge style, spool type, hydraulic directional element.

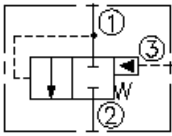
Operation

The EP08-35 is a spring-biased blocking valve, which will open port 1 to 2 when pressure at port 1 exceeds the cumulative pressure at port 3 and the bias spring pressure value. With no pressure at port 3 flow will be allowed from port 1 to 2 once the bias spring force is overcome with pressure at port 1.

Features

- Multiple function/application potential.
- Low pressure drop.
- Compact size.
- Industry-common cavity.

Symbol



Ratings

Pressure Ratings

Pressure rating 345 bar (5000 psi)

Flow Ratings

Flow rating See performance graph
 Maximum internal leakage 164 ml/min (10 in³/min) - **Note:** At 207 bar (3000 psi)

Temperature Ratings

Operating fluid temperature	-40 to 100 °C (-40 to 212 °F)	- Note: With buna N seals
	-26 to 204 °C (-15 to 400 °F)	- Note: With fluorocarbon seals
	-54 to 107 °C (-65 to 225 °F)	- Note: With polyurethane seals
Storage temperature	-40 to 70 °C (-40 to 160 °F)	
Ambient temperature	-40 to 90 °C (-40 to 194 °F)	

Operating Parameters

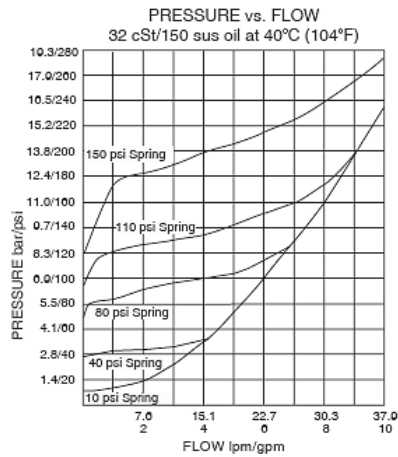
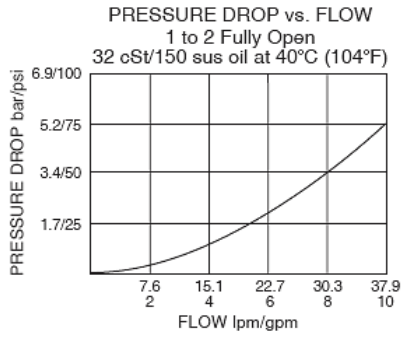
Fluids	Mineral based or synthetic hydraulic fluid with lubricating properties
Fluid viscosity range	7.4 to 420 cSt
Maximum operating contamination level	20/18/14 per ISO 4406

Properties

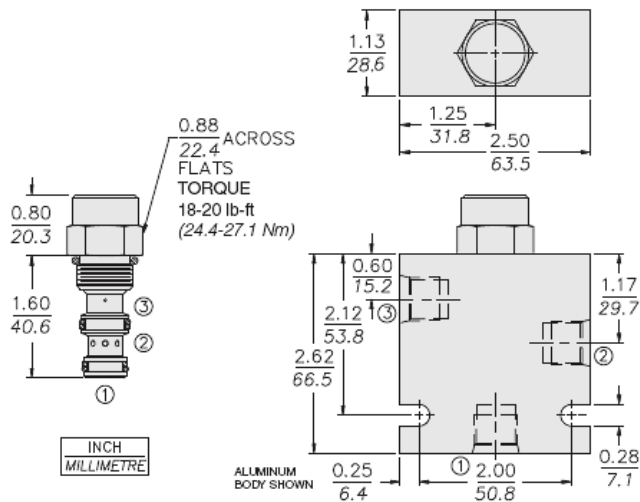
Unit weight	0.1 kg (0.22 lb)
Internal wetted surface area	101 cm ² (15.6 in ²)



Performance



Dimensions



Installation Specifications

Cavity	VC08-3
Cartridge installation torque	25.8 to 28.5 N-m (19 to 21 ft-lb)
Maximum allowable torque	54.2 N-m (40 ft-lb)
Orientation restriction	None

Accessories

Seal kit	SK08-3X-MM	- Note: X = seal option
----------	------------	-------------------------

Order Code



ORDERING INFORMATION

EP08-35X-X-X-XXX

BASE MODEL
NUMBERCAGE OPTIONS:REGULAR - (BLANK)
METERING - GPORTING:

CARTRIDGE ONLY - 0

SEALS:BUNA N - N
FLUOROCARBON - V
* POLYURETHANE - PBIAS SPRING VALUE:10 psi [0,7 bar] - 10
40 psi [2,8 bar] - 40
50 psi [3,4 bar] - 50
65 psi [4,5 bar] - 65
80 psi [5,5 bar] - 80
110 psi [7,6 bar] - 110
150 psi [10,3 bar] - 150* REQUIRED FOR PRESSURES
OVER 3500 psi [241 bar].**Model Options****EP08-35D-H-J-R****D Cage Option**

CODE	DESCRIPTION
BLANK	Standard Cage
G	Metering (staggered holes)

H Line Body

CODE	DESCRIPTION
0	No Body
4T	Aluminum SAE 4
6T	Aluminum SAE 6
6TD	Ductile Iron SAE 6
8TD	Ductile Iron SAE 8
3B	Aluminum BSPP 3/8" (3)
3BD	Ductile Iron BSPP 3/8" (3)

J Seal

CODE	DESCRIPTION
N	Buna-N
V	Fluorocarbon
P	Polyurethane
U	PPDI Urethane

R Spring

CODE	DESCRIPTION
10	10 psi Bias Spring
40	40 psi Bias Spring



CODE	DESCRIPTION
80	80 psi Bias Spring
110	110 psi Bias Spring
150	150 psi Bias Spring