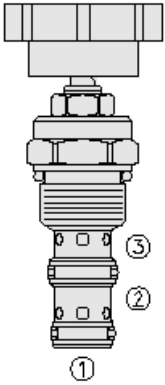




## Overview



### Description

An adjustable, pressure compensated, flow control valve. It CAN be used as a priority type flow regulator, or a restrictive type, 2-way, flow regulator when the bypass line (port 2) is blocked.

### Operation

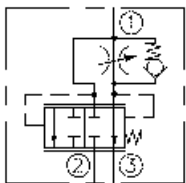
The regulated flow increases from closed to fully open, with counter-clockwise adjustment rotation. The valve will maintain the set flow regardless of pressure variations on the regulated or bypass port.

**note:** it is intended for use with mineral based or synthetic hydraulic fluids with lubricating properties.

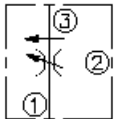
### Features

- Bypass port 2 may be fully pressurized.
- Fine low-torque adjustment.
- Hardened steel parts for long life.
- Quiet, modulated response.
- Industry-common cavity.

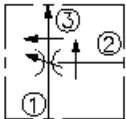
### Symbol



2-Ported:



3-Ported:



## Ratings

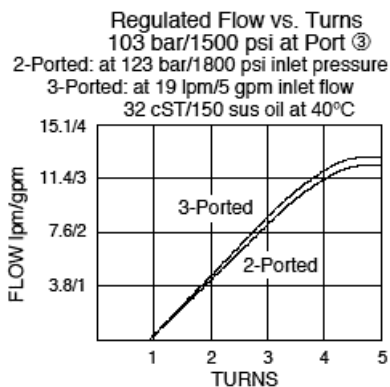
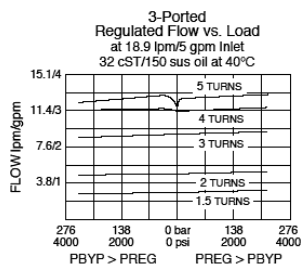
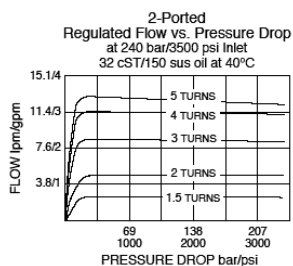
### Pressure Ratings

Pressure rating 240 bar (3500 psi)

### Flow Ratings

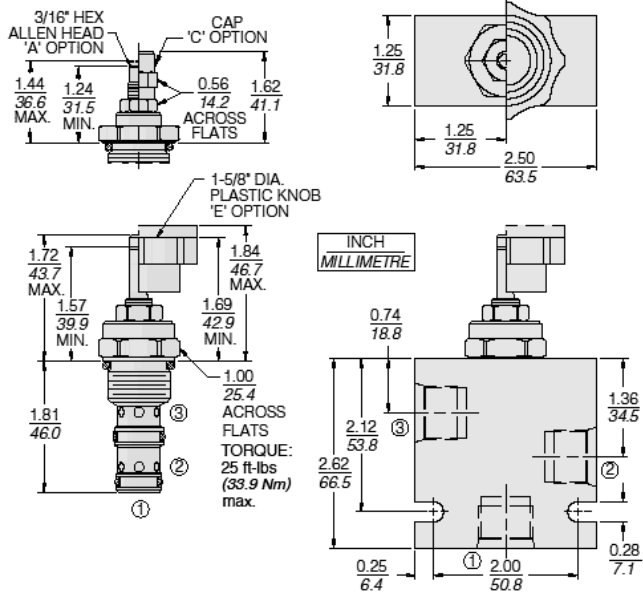
Regulated flow	0 to 12 lpm (0 to 3.2 gpm)	- <b>Note:</b> 2-ported
	0 to 13 lpm (0 to 3.5 gpm)	- <b>Note:</b> 3-ported
Inlet flow rating	0 to 19 lpm (0 to 5 gpm)	- <b>Note:</b> Nominal, 3-ported
	0 to 26 lpm (0 to 7 gpm)	- <b>Note:</b> Maximum, 3-ported

## Performance





## Dimensions

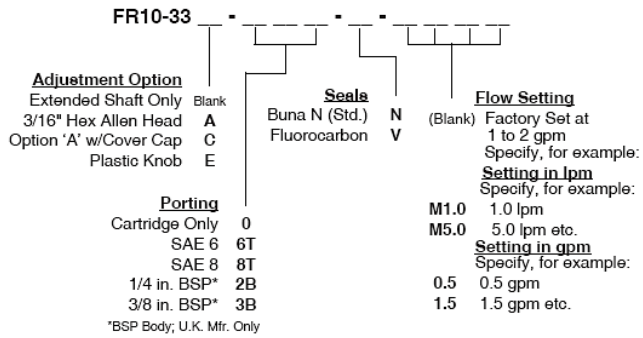


## Installation Specifications

Cavity	VC10-3
Cartridge installation torque	33.9 N-m (25 ft-lb)



## Order Code



### Model Options

FR10-33F-H-J-/T

#### F Adjustment Option

CODE	DESCRIPTION
A	3/16" Hex Allen Head
BLANK	Extended Shaft Only
C	3/16" Hex Allen Head with Cover Cap
E	Plastic Knob

#### H Line Body

CODE	DESCRIPTION
0	No Body
6T	Aluminum SAE 6
8T	Aluminum SAE 8
6TD	Ductile Iron SAE 6
8TD	Ductile Iron SAE 8
3B	Aluminum BSPP 3/8" (3)
3BD	Ductile Iron BSPP 3/8" (3)

#### J Seal

CODE	DESCRIPTION
N	Buna-N
V	Fluorocarbon
P	Polyurethane
U	PPDI Urethane

#### T Flow setting

CODE	DESCRIPTION
XX	Flow setting