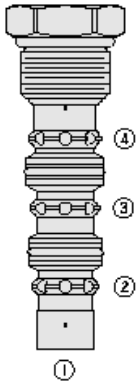




**Overview**



**Description**

The HS52-42 is a screw-in, cartridge style, closed in transition, 2-position, 3-way, hot oil shuttle valve for use with general purpose hydraulic fluids.

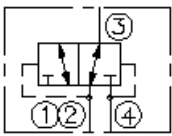
**Operation**

The valve CAN be used for hydrostatic transmissions to direct charge pump oil to a heat exchanger or to tank.

**Features**

- Hardened parts for long life.
- Industry-common cavity.

**Symbol**



**Ratings**

**Pressure Ratings**

Pressure rating 345 bar (5000 psi)

**Temperature Ratings**

Operating fluid temperature -40 to 120 °C (-40 to 248 °F)

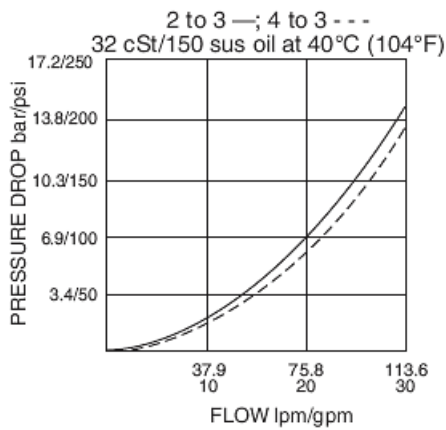
**Flow Ratings**

Maximum internal leakage 17 in<sup>3</sup>/min - **Note:** At 345 bar (5000 psi)  
Flow performance See graph

**Properties**

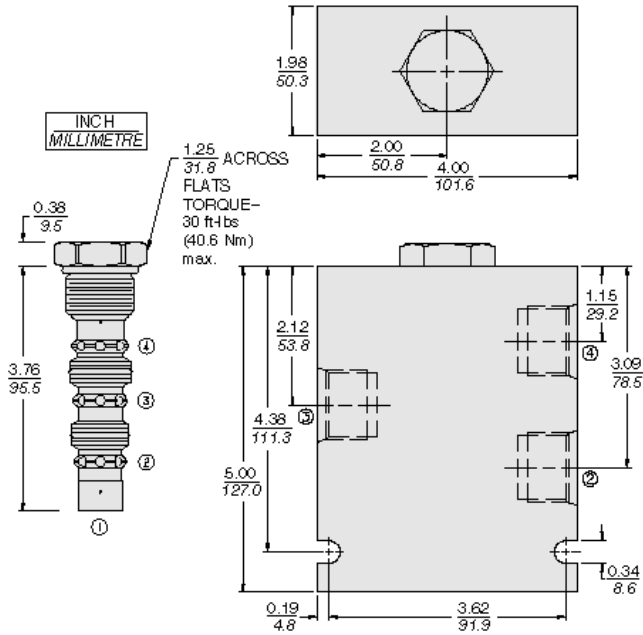
Materials steel with work surfaces hardened. External surfaces are zinc plated. Buna N o-rings are standard.  
Unit weight 0.25 kg (0.55 lb)

**Performance**





Dimensions



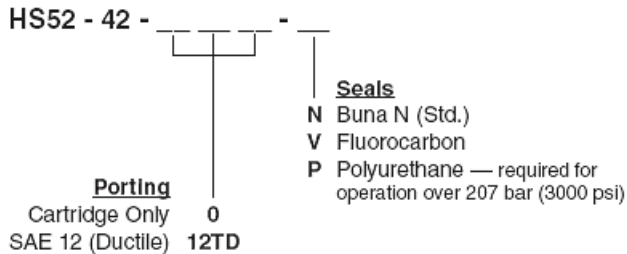
Installation Specifications

Cavity	VC12-4
Cartridge installation torque	44.7 to 50.2 N-m (33 to 37 ft-lb)

Accessories

Seal kit	SK52-4N-MM	- <b>Note:</b> Buna N
	SK52-4V-MM	- <b>Note:</b> Viton
	SK52-4P-MM	- <b>Note:</b> Polyurethane

Order Code



Model Options

HS52-42-H-J

H Line Body

CODE	DESCRIPTION
0	No Body
10T	Aluminum SAE 10
12T	Aluminum SAE 12
6B	Aluminum BSPP 3/4" (6)

J Seal

CODE	DESCRIPTION
N	Buna-N
V	Fluorocarbon
P	Polyurethane