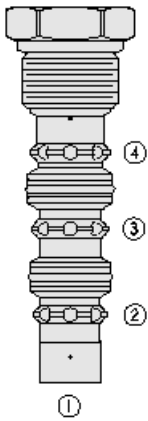




Overview



Description

The HS52-43 is a screw-in, cartridge style, spring centered spool, closed centered, 3-position, 3-way, hot oil shuttle valve for use with general purpose hydraulic fluids.

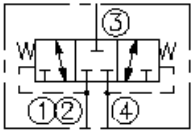
Operation

The valve CAN be used for hydrostatic transmissions to direct charge pump oil to a heat exchanger or to tank.

Features

- Hardened spool and cage for long life.
- Industry-common cavity.

Symbol



Ratings

Pressure Ratings

Pressure rating	345 bar (5000 psi)	- Note: Maximum, polyurethane seals are recommended for 5000 psi [345 bar]
Bias spring value	4.1 bar (60 psi)	

Temperature Ratings

Operating fluid temperature	-40 to 120 °C (-40 to 248 °F)
-----------------------------	-------------------------------

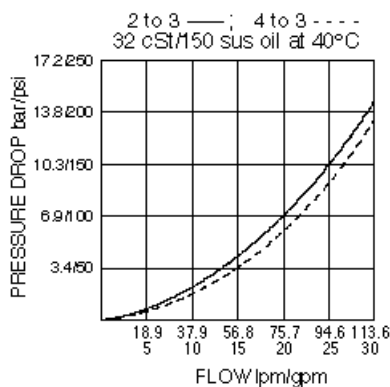
Flow Ratings

Maximum internal leakage	100 in ³ /min	- Note: At 345 bar (5000 psi)
Flow performance	see graph	

Properties

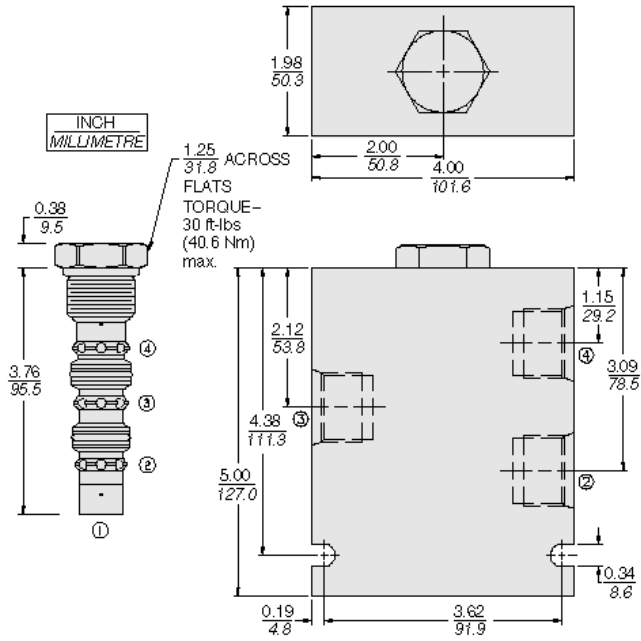
Materials	steel with work surfaces hardened. External surfaces are zinc plated. Buna N o-rings are standard.
Unit weight	0.26 kg (0.57 lb)

Performance





Dimensions



Installation Specifications

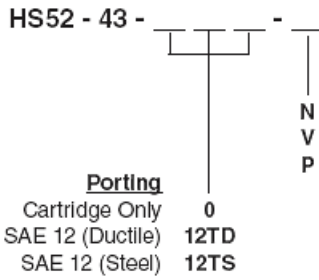
Cavity	VC12-4
Cartridge installation torque	44.7 to 50.2 N-m (33 to 37 ft-lb)

Accessories

Seal kit	SK52-4N-MM	- Note: Buna N
	SK52-4V-MM	- Note: Viton
	SK52-4P-MM	- Note: Polyurethane



Order Code



- Seals**
- N** Buna N (Std.)
 - V** Fluorocarbon
 - P** Polyurethane — recommended for operation at 345 bar (5000 psi)

Model Options

HS52-43-H-J

H Line Body

CODE	DESCRIPTION
0	No Body
10T	Aluminum SAE 10
12T	Aluminum SAE 12
6B	Aluminum BSPP 3/4" (6)

J Seal

CODE	DESCRIPTION
N	Buna-N
V	Fluorocarbon
P	Polyurethane