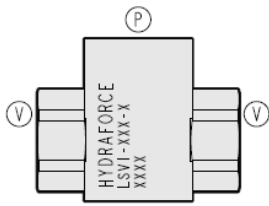




Overview



Description

The LSV1 is an in-line plumbed, low leak, load shuttling hydraulic check valve for use as a directional selector.

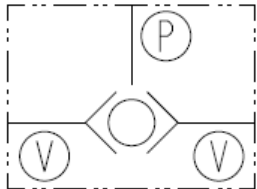
Operation

The LSV1 will allow flow from the higher pressure of either "V" port to "P" port.

Features

- Rapid response to load direction changes.
- Inline body for easy external plumbing
- Choice of port styles

Symbol



Ratings

Pressure Ratings

Pressure rating 241 bar (3500 psi)

Flow Ratings

Flow rating See performance graph
 Maximum internal leakage 0.05 ml/min (1 drops/min) - **Note:** At 207 bar (3000 psi)

Temperature Ratings

Operating fluid temperature -40 to 100 °C (-40 to 212 °F) - **Note:** With buna N seals
 -26 to 204 °C (-15 to 400 °F) - **Note:** With fluorocarbon seals
 -54 to 107 °C (-65 to 225 °F) - **Note:** With polyurethane seals
 Storage temperature -40 to 70 °C (-40 to 160 °F)
 Ambient temperature -40 to 90 °C (-40 to 194 °F)

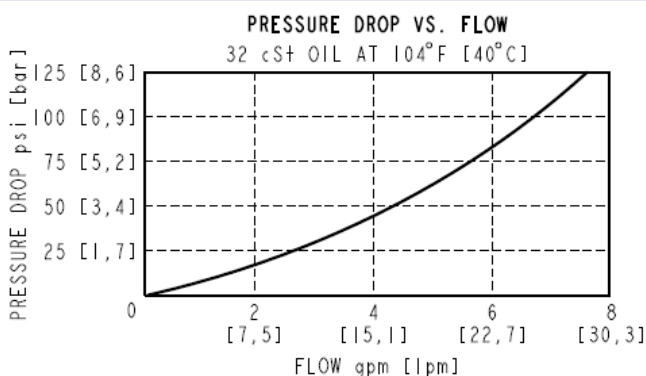
Operating Parameters

Fluids Mineral based or synthetic hydraulic fluid with lubricating properties
 Fluid viscosity range 7.4 to 420 cSt
 Maximum operating contamination level 20/18/14 per ISO 4406

Properties

Unit weight 0.12 kg (0.27 lb) - **Note:** LSV1-2P/6T
 0.21 kg (0.46 lb) - **Note:** LSV1-6TS

Performance





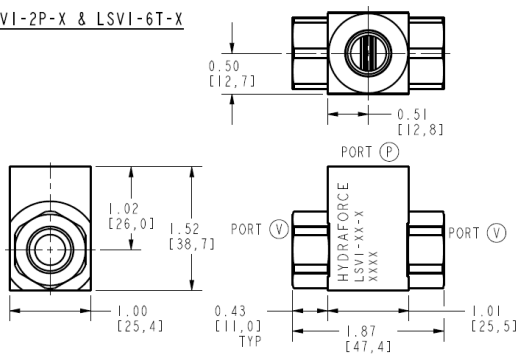
Dimensions

INCH

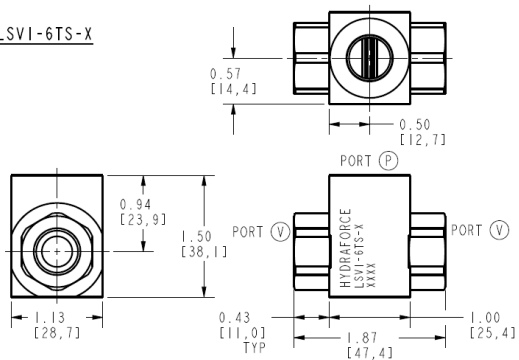
[mm]

OUTLINE

LSVI-2P-X & LSVI-6T-X



LSVI-6TS-X



ALL DIMENSIONS ARE FOR REFERENCE ONLY.

Accessories

Seal kit

Non-serviceable

Order Code

ORDERING INFORMATION

LSVI-XXX-X

BASE MODEL NUMBER

PORTING:

SAE 6 - 6T
SAE 6 (STEEL) - 6TS

SEALS:

BUNA N - N
VITON - V
POLYURETHANE - P

Model Options

LSV1-H-J

H Porting

CODE	DESCRIPTION
6T	Aluminum SAE 6
6TS	Steel SAE 6

J Seals

CODE	DESCRIPTION
N	Buna N
V	Fluorocarbon
P	Polyurethane