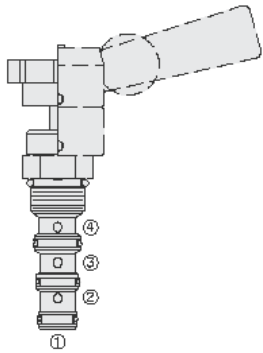




Overview



Description

The MR10-40X is a direct acting, manual rotary, spool type, 2 position, 4 way directional control valve.

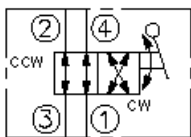
Operation

Two positions, 90° rotation. In extreme counterclockwise position, ports 1 and 4 are open while ports 2 and 3 are closed. In extreme clockwise position, ports 1 and 2 are open while ports 3 and 4 are closed. All ports are closed in transition.

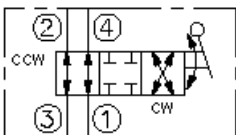
Features

- Two-position detent or infinite friction lock operators may be ordered separately.
- May be fully pressurized at all ports.
- Optional lock-down bracket.
- Heavy-duty construction.
- Industry common cavity.

Symbol



TRANSITION:



Ratings

Pressure Ratings

Pressure rating 241 bar (3500 psi)

Flow Ratings

Flow rating See chart

Maximum internal leakage 164 ml/min (10 in³) - **Note:** At 241 bar (3500 psi)

Temperature Ratings

Operating fluid temperature	-40 to 100 °C (-40 to 212 °F)	- Note: With buna N seals
	-26 to 204 °C (-15 to 400 °F)	- Note: With fluorocarbon seals
	-54 to 107 °C (-65 to 225 °F)	- Note: With polyurethane seals
Storage temperature	-40 to 71 °C (-40 to 160 °F)	
Ambient temperature	-40 to 71 °C (-40 to 160 °F)	

Operating Parameters

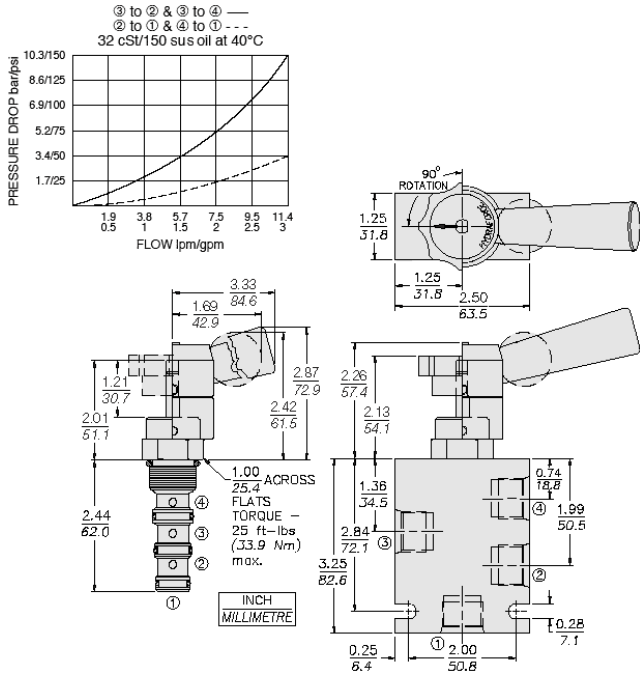
Fluids	Mineral based or synthetic hydraulic fluid with lubricating properties
Fluid viscosity range	7.4 to 420 cSt
Maximum operating contamination level	20/18/14 per ISO 4406

Properties

Unit weight	0.17 kg (0.37 lb)
Internal wetted surface area	175 cm ² (27.2 in ²)



Performance



Installation Specifications

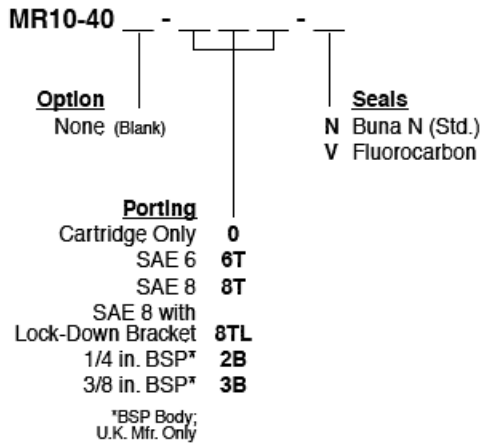
Cavity	VC10-4
Cartridge installation torque	32.5 to 35.3 N-m (24 to 26 ft-lb)
Orientation restriction	None

Accessories

Seal kit	SK10-4X-MMM	- Note: X = seal option
----------	-------------	--------------------------------



Order Code



Model Options

MR10-40-H-J

H Line Body

CODE	DESCRIPTION
0	No Body
6T	Aluminum SAE 6
8T	Aluminum SAE 8
6TD	Ductile Iron SAE 6

J Seal

CODE	DESCRIPTION
N	Buna-N
V	Fluorocarbon
P	Polyurethane
U	PPDI Urethane