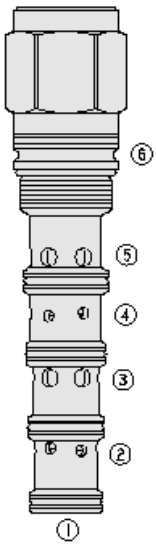




## Overview



### Description

The PE42-S67C is a screw-in, cartridge style, proportional, spring centered spool, pilot operated hydraulic directional valve.

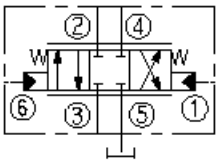
### Operation

In neutral position all ports are blocked. On remote pilot signal at port 1 the valve's spool shifts proportionally to the applied pilot pressure to allow flow from port 3 to port 4, thru a load, such as hydraulic cylinder or motor, and then from port 2 to port 5 and to tank. On remote pilot signal at port 6 the valve's spool shifts proportionally to the applied pressure in opposite direction thus reversing the flow direction. The valve's spool is symmetrical providing meter-in and meter-out control.

### Features

- Hardened spool and cage for long life.
- Cost-effective ISO cavity.
- Excellent metering characteristics.
- Good Linearity.

### Symbol



## Ratings

### Pressure Ratings

Pressure rating	345 bar (5000 psi)	- <b>Note:</b> Port 3
	241 bar (3500 psi)	- <b>Note:</b> Ports 2, 4
	27.6 bar (400 psi)	- <b>Note:</b> Ports 1, 6
Proof pressure	690 bar (10000 psi)	
Burst pressure	1241 bar (18000 psi)	

### Flow Ratings

Flow rating	See performance graph
-------------	-----------------------

### Temperature Ratings

Operating fluid temperature	-40 to 100 °C (-40 to 212 °F)	- <b>Note:</b> With buna N seals
	-26 to 204 °C (-15 to 400 °F)	- <b>Note:</b> With viton seals
	-54 to 107 °C (-65 to 225 °F)	- <b>Note:</b> With polyurethane and urethane seals
Storage temperature	-40 to 70 °C (-40 to 160 °F)	
Ambient temperature	-40 to 70 °C (-40 to 160 °F)	

## Operating Parameters

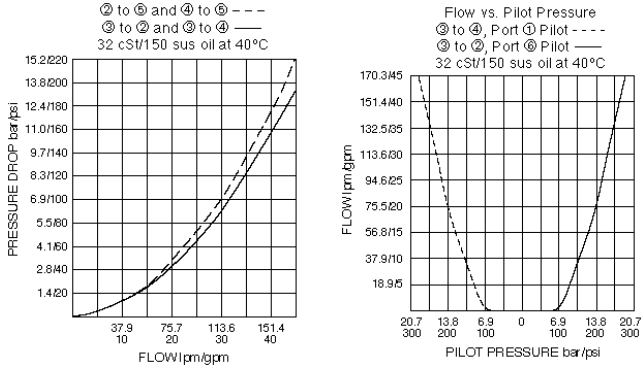
Fluids	Mineral based or synthetic hydraulic fluid with lubricating properties	
Fluid viscosity range	7.4 to 420 cSt	
Maximum operating contamination level	20/18/14 per ISO 4406	

## Properties

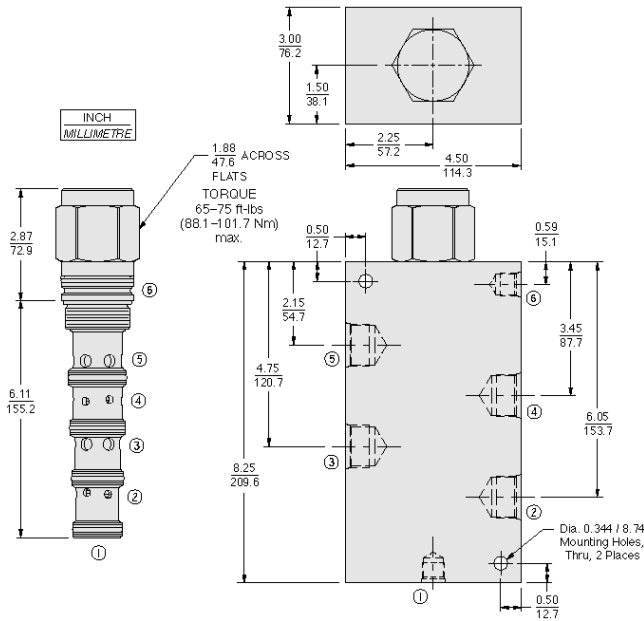
Displacement per stroke	2.46 cm <sup>3</sup> (0.15 in <sup>3</sup> )	- <b>Note:</b> per stroke direction
Unit weight	0.76 kg (1.68 lb)	
Internal wetted surface area	976 cm <sup>2</sup> (151.3 in <sup>2</sup> )	



## Performance



## Dimensions



## Installation Specifications

Cavity	VC42-S6
Cartridge installation torque	88.1 to 101.7 N-m (65 to 75 ft-lb)
Orientation restriction	None

## Accessories

Seal kit	SK42-S6N-BMMMM	- <b>Note:</b> Buna N
	SK42-S6V-BMMMM	- <b>Note:</b> Viton
	SK42-S6P-BMMMM	- <b>Note:</b> Polyurethane
	SK42-S6U-B0000	- <b>Note:</b> Urethane



**Order Code**

PE42-S67C - -

- Porting**
- Cartridge Only **0**
  - SAE 12 **12TD**
  - SAE 16 **16TD**
  - SAE 20 **20TD**
  - \*3/4 in. BSP **6BD**
  - \*1 in. BSP **8BD**
  - \*1-1/4 in. BSP **10BD**
- \*BSP Body, U.K. Mfr. Only

- Seals**
- N** Buna-N (Std.)
  - P** Polyurethane (Required for pressures over 240 bar/3500 psi)
  - V** Fluorocarbon

**Model Options**

**PE42-S67C-H-J**

**H Line Body**

CODE	DESCRIPTION
0	No Body
20TD	Ductile Iron SAE 20

**J Seal**

CODE	DESCRIPTION
N	Buna-N
V	Fluorocarbon
P	Polyurethane
U	PPDI Urethane