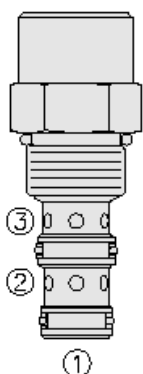




## Overview



### Description

The EC10-32 is a screw-in, cartridge style, load sense, flow on demand, pressure compensator.

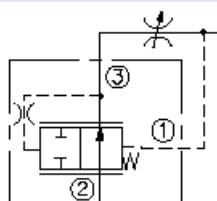
### Operation

With inlet flow at port 2, port 3 will deliver required flow regardless of load pressure sensed at port 1. 0.021 in [0,53 mm] orifice is recommended to be installed in load sense line at port 1 for better stability.

### Features

- Hardened parts for long life.
- Quiet, modulated response.
- Industry-common cavity.

### Symbol



## Ratings

### Pressure Ratings

Pressure rating 241 bar (3500 psi)

### Flow Ratings

Flow rating	18.9 lpm (5.0 gpm)	- <b>Note:</b> With 2.8 bar (40 psi)compensating spring
	28.0 lpm (7.5 gpm)	- <b>Note:</b> With 5.5 bar (80 psi)compensating spring
	38.1 lpm (10 gpm)	- <b>Note:</b> With 10.3 bar (150 psi)compensating spring
	57.0 lpm (15 gpm)	- <b>Note:</b> With 17.2 bar (250 psi)compensating spring

### Temperature Ratings

Operating fluid temperature	-40 to 100 °C (-40 to 212 °F)	- <b>Note:</b> With buna N seals
	-26 to 204 °C (-15 to 400 °F)	- <b>Note:</b> With fluorocarbon seals
	-54 to 107 °C (-65 to 225 °F)	- <b>Note:</b> With polyurethane seals
Storage temperature	-40 to 70 °C (-40 to 160 °F)	
Ambient temperature	-40 to 70 °C (-40 to 160 °F)	

### Other Ratings

Corrosion protection 960 hr salt spray per ASTM b117 (model number - gec10-32)

## Operating Parameters

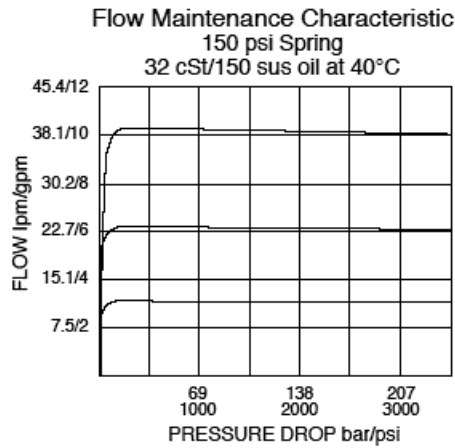
Fluids	Mineral based or synthetic hydraulic fluid with lubricating properties
Fluid viscosity range	7.4 to 420 cSt
Maximum operating contamination level	18/16/13 per ISO 4406

## Properties

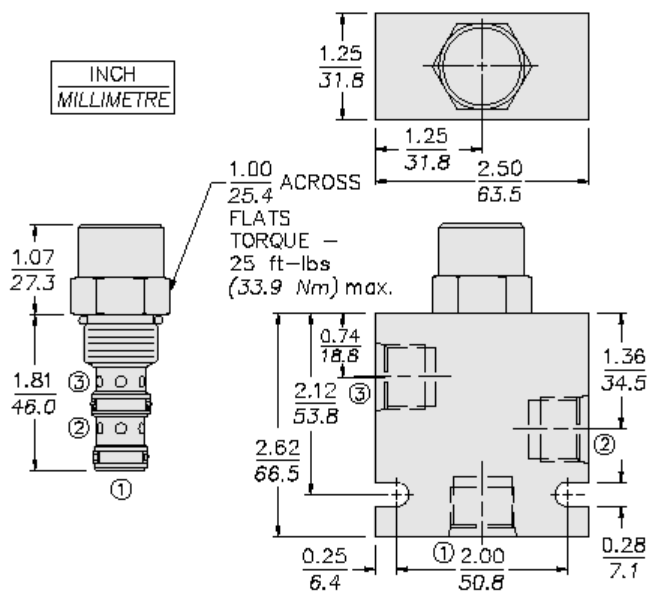
Unit weight	0.16 kg (0.35 lb)
Internal wetted surface area	145 cm <sup>2</sup> (22.4 in <sup>2</sup> )



## Performance



## Dimensions



## Installation Specifications

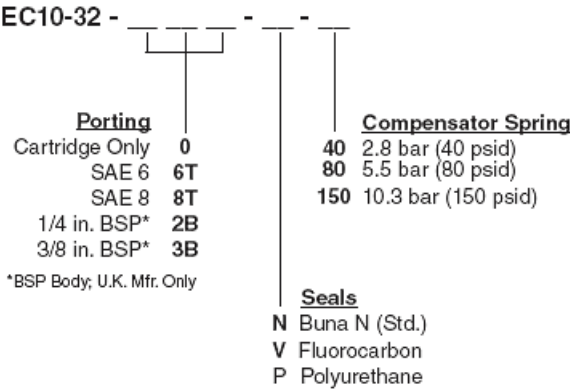
Cavity	VC10-3
Cartridge installation torque	34 to 37 N-m (25 to 27 ft-lb)
Maximum allowable torque	68 N-m (50 ft-lb) - <b>Note:</b> For 40,80, and 150 psi spring options only
Orientation restriction	None

## Accessories

Seal kit	SK10-3X-MM	- <b>Note:</b> X = seal option
----------	------------	--------------------------------



Order Code



Model Options

EC10-32-H-J-R

H Line Body

CODE	DESCRIPTION
0	No Body
6T	Aluminum SAE 6
8T	Aluminum SAE 8
6TD	Ductile Iron SAE 6
8TD	Ductile Iron SAE 8
3B	Aluminum BSPP 3/8" (3)
3BD	Ductile Iron BSPP 3/8" (3)

J Seal

CODE	DESCRIPTION
N	Buna-N
V	Fluorocarbon
P	Polyurethane
U	PPDI Urethane

R Compensator Spring

CODE	DESCRIPTION
40	40 Compensator Spring
80	80 Compensator Spring
150	150 Compensator Spring
250	250 Compensator Spring