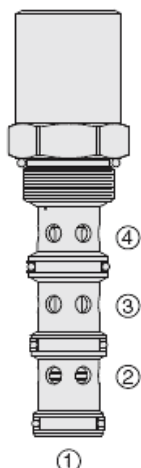




## Overview



### Description

EC16-42 is a screw-in, cartridge style, priority on demand pressure compensator valve with static load sense. Intended to provide priority flow in required amount, while allowing excessive flow to be used for auxiliary functions.

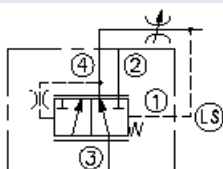
### Operation

With inlet flow at port 3, the EC16-42 will deliver required priority flow at port 4 regardless of load pressure. Excessive flow exits at port 2 and port 1 is the load sense port. All ports may be fully pressurized.

### Features

- Priority-on-demand
- Static load sense
- Hardened parts for long life.
- Quiet, modulated response.
- Industry-common cavity.

## Symbol



## Ratings

### Pressure Ratings

Pressure rating	241 bar (3500 psi)
Proof pressure	690 bar (10000 psi)
Burst pressure	1275 bar (18500 psi)

### Flow Ratings

Inlet flow rating	115 lpm (30.0 gpm)	- <b>Note:</b> Maximum, with compensating spring 5.5 bar (80 psi)
	150 lpm (40.0 gpm)	- <b>Note:</b> Maximum, with compensating spring 10.3 bar (150 psi)
	189 lpm (50.0 gpm)	- <b>Note:</b> Maximum, with 15.2 bar (220 psi)
Priority flow rating	- <b>Note:</b> 80% of input flow when priority pressure exceeds bypass pressure; 50% of input flow when bypass pressure exceeds priority pressure	

### Temperature Ratings

Operating fluid temperature	-40 to 100 °C (-40 to 212 °F)	- <b>Note:</b> With buna N seals
	-26 to 204 °C (-15 to 400 °F)	- <b>Note:</b> With fluorocarbon seals
	-54 to 107 °C (-65 to 225 °F)	- <b>Note:</b> With polyurethane seals
	-54 to 107 °C (-65 to 225 °F)	- <b>Note:</b> With urethane seals
Storage temperature	-40 to 70 °C (-40 to 160 °F)	
Ambient temperature	-40 to 70 °C (-40 to 160 °F)	

### Other Ratings

Corrosion protection	960 hr salt spray per ASTM b117 (gec16-42)
----------------------	--

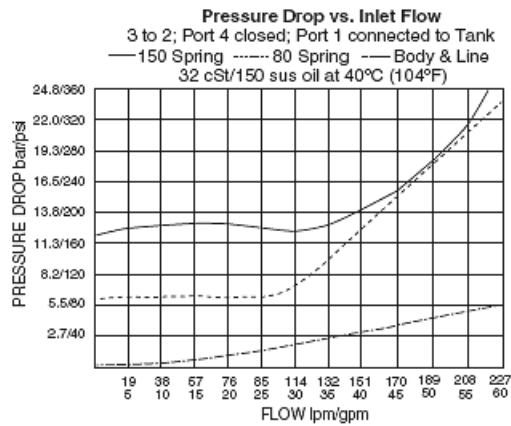
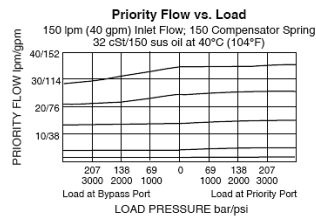
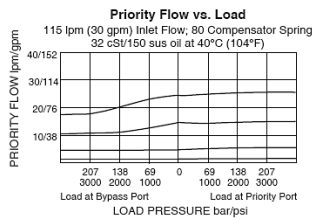
## Operating Parameters

Fluids	Mineral based or synthetic hydraulic fluid with lubricating properties
Fluid viscosity range	7.4 to 420 cSt
Maximum operating contamination level	18/16/13 per ISO 4406

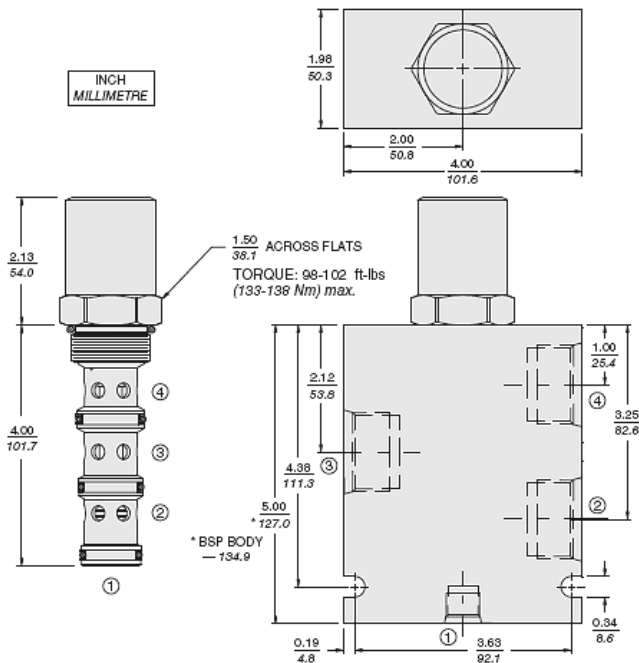
## Properties

Unit weight	0.67 kg (1.48 lb)
Internal wetted surface area	425 cm <sup>2</sup> (65.9 in <sup>2</sup> )

## Performance



## Dimensions



## Installation Specifications

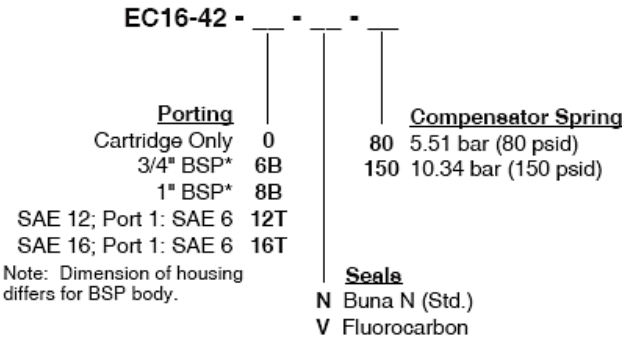
Cavity	VC16-4
Cartridge installation torque	133 to 138 N-m (98 to 102 ft-lb)
Orientation restriction	None

## Accessories

Seal kit	SK16-4X-MMM - <b>Note:</b> X = seal option
	SK10-4U-O - <b>Note:</b> Urethane



Order Code



Model Options

EC16-42-H-J-R

H Line Body

CODE	DESCRIPTION
0	No Body
12TD	Ductile Iron SAE 12
16TD	Ductile Iron SAE 16

J Seal

CODE	DESCRIPTION
N	Buna-N
V	Fluorocarbon
P	Polyurethane
U	PPDI Urethane

R Compensator Spring

CODE	DESCRIPTION
80	80 Compensator Spring
150	150 Compensator Spring
220	220 Compensator Spring