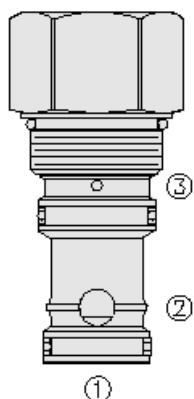




Overview



Description

The EP20-S38 is a screw-in cartridge style hydraulic directional element. It is a spring biased bi-directional blocking poppet type valve.

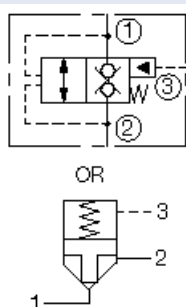
Operation

It will block port 1 to 2 or 2 to 1 until pressure at port 1 or 2 exceeds the cumulative pressure at port 3 and the bias spring. With no pressure at port 3, flow will be allowed from port 1 to 2 or 2 to 1 once the bias spring force is overcome state. The ratio of areas between ports 1 and 2 is 1:1 and the ratio of areas between ports 1 or 2 and 3 is 1:2.

Features

- Multiple function/application potential.
- Low pressure drop.
- Industry common cavity.

Symbol



Ratings

Pressure Ratings

Pressure rating 241 bar (3500 psi)

Flow Ratings

Maximum internal leakage 0.6 ml/min (12 drops/min) - Note: At 241 bar (3500 psi)

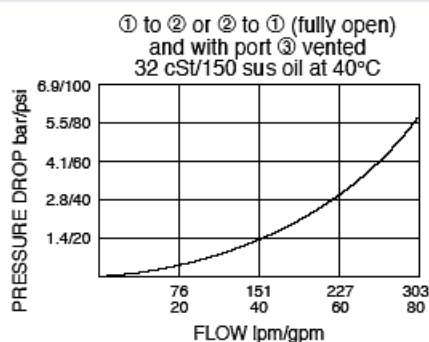
Temperature Ratings

Operating fluid temperature -40 to 120 °C (-40 to 248 °F)

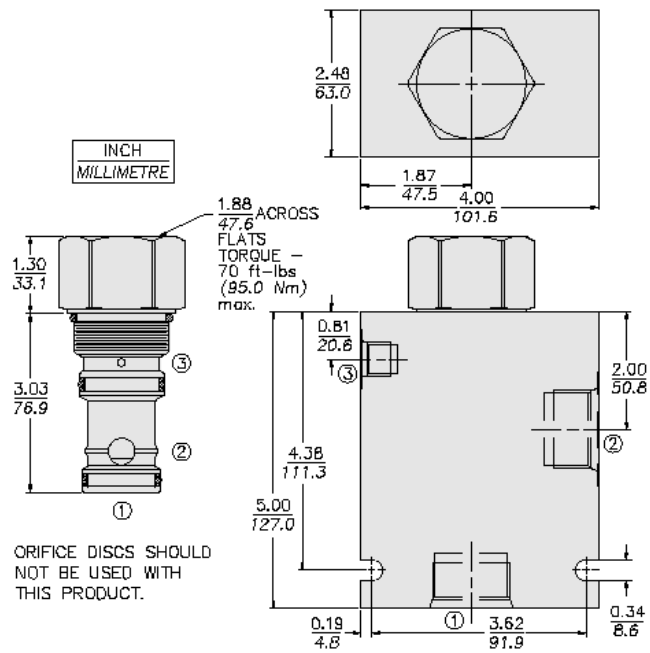
Properties

Materials steel with hardened work surfaces; zinc plated exposed surfaces
Unit weight 0.82 kg (1.8 lb)

Performance



Dimensions



Installation Specifications

Cavity

VC20-S3

Accessories

Seal kit

SK20-S3N-MM

SK20-S3V-M

SK20-S3P-MM

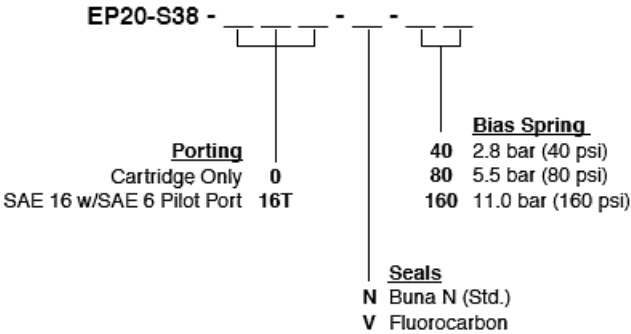
- **Note:** Buna N

- **Note:** Viton

- **Note:** Polyurethane



Order Code



Model Options

EP20-S38-H-J-R

H Line Body

CODE	DESCRIPTION
0	No Body
16T	Aluminum SAE 16
16TD	Ductile Iron SAE 16

J Seal

CODE	DESCRIPTION
N	Buna-N
V	Fluorocarbon
P	Polyurethane
U	PPDI Urethane

R Spring

CODE	DESCRIPTION
40	40 psi Bias Spring
80	80 psi Bias Spring
160	160 psi Bias Spring