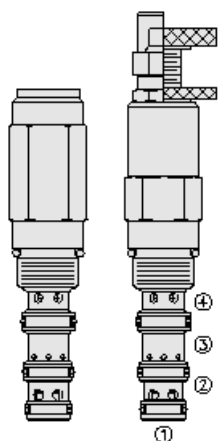




## Overview



### Description

The FRRV10-41F is a screw-in, cartridge type, combination valve includes a pressure compensated, non adjustable priority type flow regulator and a pressure relief valve. The valve is intended for use with mineral based or synthetic hydraulic fluids with lubricating properties.

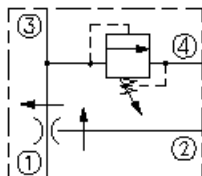
### Operation

It maintains a constant flow rate from port 3 regardless of load pressure changes at priority port 3, or bypass port 2.

### Features

- Two valve functions in one, industry-common cavity.
- Adjustments cannot be backed out of the valve.
- Relief valve adjustments prohibit relief valve spring from going solid.
- Quiet, modulated response.
- Hardened parts for long life.

### Symbol



## Ratings

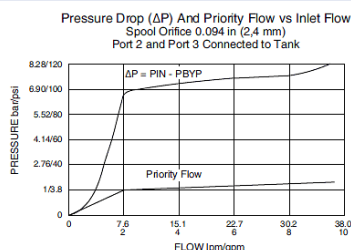
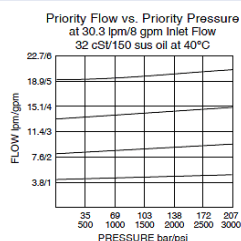
### Pressure Ratings

Pressure rating	207 bar (3000 psi) 276 bar (4000 psi)	- <b>Note:</b> Maximum system pressure
-----------------	--	--

### Flow Ratings

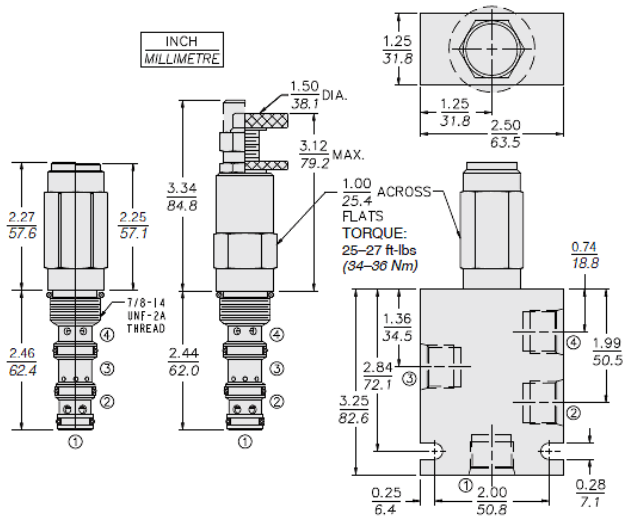
Priority flow rating	19.0 lpm (5.0 gpm)	- <b>Note:</b> Maximum
Inlet flow rating	38.0 lpm (10.0 gpm)	- <b>Note:</b> Maximum

## Performance





## Dimensions



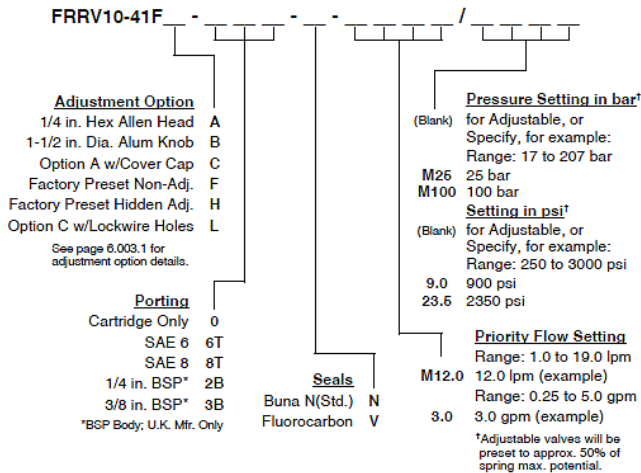
## Installation Specifications

Cavity

VC10-4



## Order Code



## Model Options

FRRV10-41F-H-J-S-T

## F Adjustment Option

CODE	DESCRIPTION
F/A	1/4" Hex Allen Head
F/B	1-1/2" Diameter Aluminum Knob with Aluminum Lock Knob
F/C	1/4" Hex Allen Head with Cover Cap
F/F	Factory Preset Non-Adjustable
F/H	Factory Preset Hidden Adjustment
F/L	1/4" Hex Allen Head with Cover Cap and Lockwire Holes

## H Line Body

CODE	DESCRIPTION
0	No Body
6T	Aluminum SAE 6
8T	Aluminum SAE 8
6TD	Ductile Iron SAE 6

## J Seal

CODE	DESCRIPTION
N	Buna-N
V	Fluorocarbon
P	Polyurethane
U	PPDI Urethane

## S Spring Setting

CODE	DESCRIPTION
MXXX	Spring Setting in XXX bar
XX	Spring Setting in XX psi (x 100)

## T Flow Setting

CODE	DESCRIPTION
XX	Flow Setting