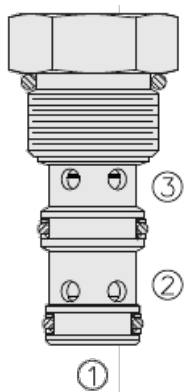




Overview



Description

HFR10-32F is a screw-in, cartridge style, fixed orifice, pressure compensated, bi-directional flow regulating valve (restrictive type).

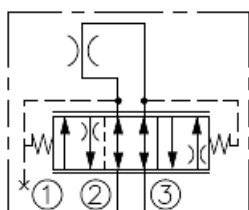
Operation

The valve maintains constant flow rate regardless of pressure drop across the valve and regardless of flow direction: from port 2 to port 3 or from port 3 to port 2. Port 1 should be blocked.

Features

- Excellent linearity and hysteresis.
- Industry-common cavity.
- All HyPerformance products are tested to the rigorous standards of the NFPA specification T2.6.1.
- All HyPerformance valves are tested at a verification level of 90% and an assurance of 99%.

Symbol



Ratings

Pressure Ratings

Pressure rating	350 bar (5075 psi)	- Note: 10% cycle life
Proof pressure	420 bar (6090 psi)	
Burst pressure	690 bar (10000 psi)	
	1380 bar (20000 psi)	

Flow Ratings

Flow rating	1.0 to 19.0 lpm (0.3 to 5.0 gpm)
-------------	----------------------------------

Temperature Ratings

Operating fluid temperature	-40 to 100 °C (-40 to 212 °F)	- Note: With buna N seals
	-26 to 204 °C (-15 to 400 °F)	- Note: With fluorocarbon seals
	-54 to 107 °C (-65 to 225 °F)	- Note: With urethane seals
Storage temperature	-40 to 70 °C (-40 to 160 °F)	
Ambient temperature	-40 to 70 °C (-40 to 160 °F)	

Operating Parameters

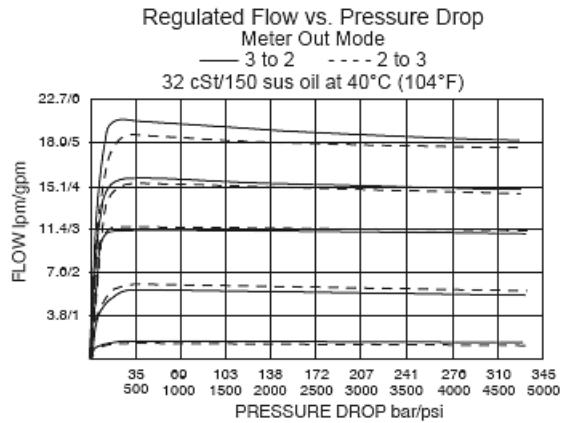
Fluids	Mineral based or synthetic hydraulic fluid with lubricating properties
Fluid viscosity range	7.4 to 420 cSt
Maximum operating contamination level	18/16/13 per ISO 4406

Properties

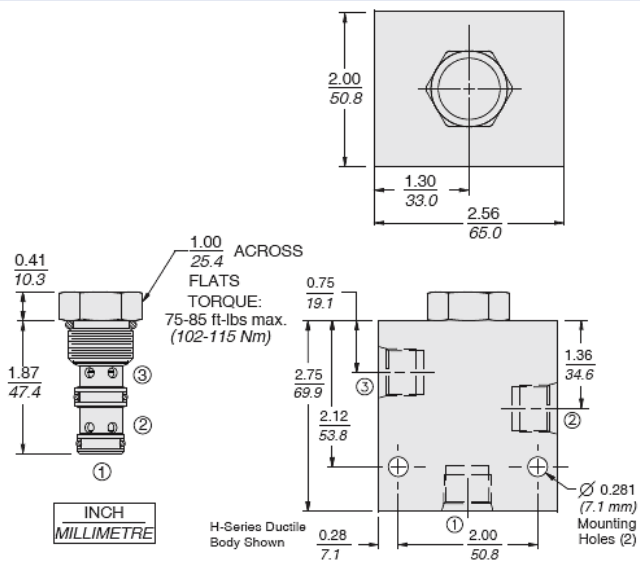
Unit weight	0.10 kg (0.22 lb)
Internal wetted surface area	137 cm² (21.2 in²)



Performance



Dimensions



Installation Specifications

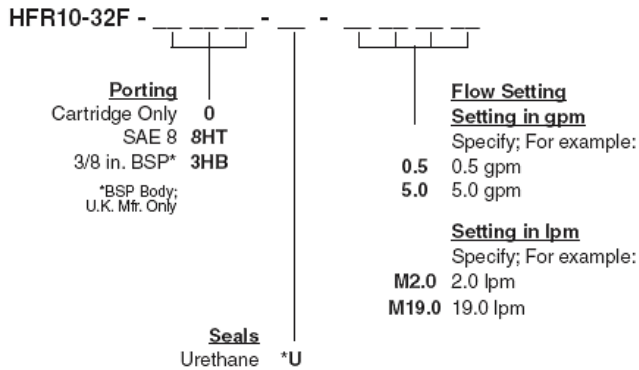
Cavity	HVC10-3	
Cartridge installation torque	102 to 115 N-m (75 to 85 ft-lb)	- Note: Steel/ductile iron cavity
	81 to 88 N-m (60 to 65 ft-lb)	- Note: Aluminum cavity
Orientation restriction	None	

Accessories

Seal kit	SK10-3N-MM	- Note: Buna N
	SK10-3V-MM	- Note: Fluorocarbon
	Hsk10-3u-o	- Note: Urethane



Order Code



*Note: Urethane seals recommended for operating pressures above 241 bar (3500 psi)

Note: Consult factory for additional seal options.

Model Options

HFR10-32F-H-J-/T

F Adjustment Option

CODE	DESCRIPTION
F	Factory Preset Non-Adjustable

H Line Body

CODE	DESCRIPTION
0	No Body

J Seal

CODE	DESCRIPTION
N	Buna-N
V	Fluorocarbon
U	PPDI Urethane

T Flow setting

CODE	DESCRIPTION
XX	Flow setting