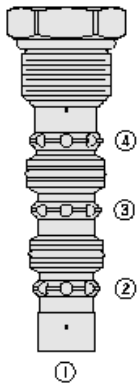


Overview



Description

The HS52-42 is a screw-in, cartridge style, closed in transition, 2-position, 3-way, hot oil shuttle valve for use with general purpose hydraulic fluids.

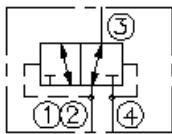
Operation

The valve CAN be used for hydrostatic transmissions to direct charge pump oil to a heat exchanger or to tank.

Features

- Hardened parts for long life.
- Industry-common cavity.

Symbol



Ratings

Pressure Ratings

Pressure rating 345 bar (5000 psi)

Temperature Ratings

Operating fluid temperature -40 to 120 °C (-40 to 248 °F)

Flow Ratings

Maximum internal leakage 17 in³/min - **Note:** At 345 bar (5000 psi)

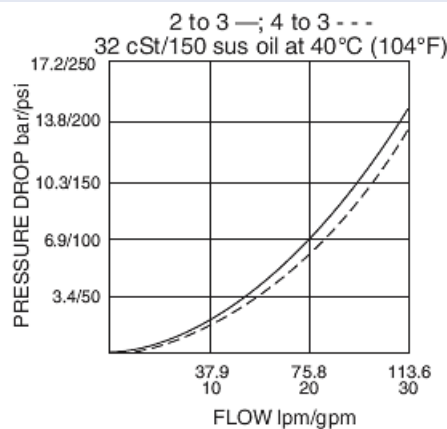
Flow performance See graph

Properties

Materials steel with work surfaces hardened. External surfaces are zinc plated. Buna N o-rings are standard.

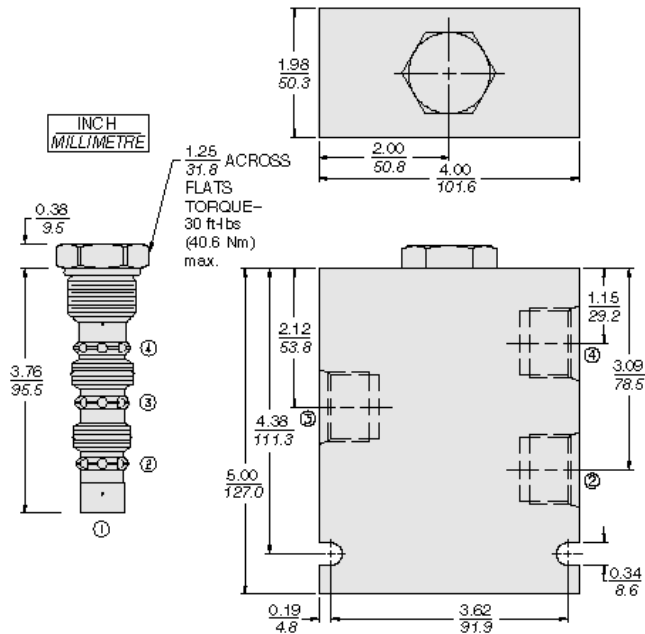
Unit weight 0.25 kg (0.55 lb)

Performance





Dimensions



Installation Specifications

Cavity	VC12-4
Cartridge installation torque	44.7 to 50.2 N-m (33 to 37 ft-lb)

Accessories

Seal kit	SK52-4N-MM	- Note: Buna N
	SK52-4V-MM	- Note: Viton
	SK52-4P-MM	- Note: Polyurethane

Order Code

HS52 - 42 -	-
Porting	Seals
Cartridge Only	N Buna N (Std.)
SAE 12 (Ductile)	V Fluorocarbon
12TD	P Polyurethane — required for operation over 207 bar (3000 psi)

Model Options

HS52-42-H-J

H Line Body

CODE	DESCRIPTION
0	No Body
10T	Aluminum SAE 10
12T	Aluminum SAE 12
6B	Aluminum BSPP 3/4" (6)

J Seal

CODE	DESCRIPTION
N	Buna-N
V	Fluorocarbon
P	Polyurethane