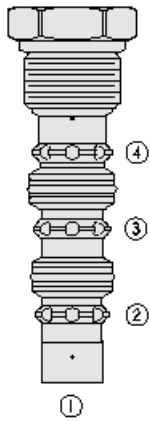


## Overview



### Description

The HS52-43 is a screw-in, cartridge style, spring centered spool, closed centered, 3-position, 3-way, hot oil shuttle valve for use with general purpose hydraulic fluids.

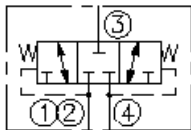
### Operation

The valve CAN be used for hydrostatic transmissions to direct charge pump oil to a heat exchanger or to tank.

### Features

- Hardened spool and cage for long life.
- Industry-common cavity.

### Symbol



## Ratings

### Pressure Ratings

Pressure rating	345 bar (5000 psi)	- <b>Note:</b> Maximum, polyurethane seals are recommended for 5000 psi [345 bar]
Bias spring value	4.1 bar (60 psi)	

### Temperature Ratings

Operating fluid temperature	-40 to 120 °C (-40 to 248 °F)
-----------------------------	-------------------------------

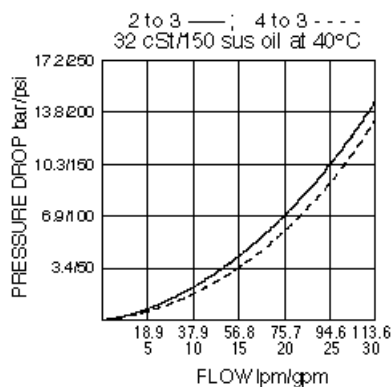
### Flow Ratings

Maximum internal leakage	100 in <sup>3</sup> /min	- <b>Note:</b> At 345 bar (5000 psi)
Flow performance	see graph	

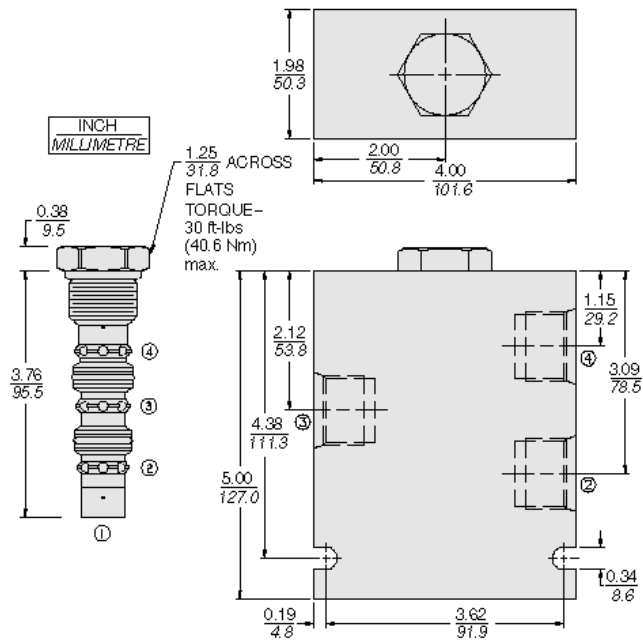
## Properties

Materials	steel with work surfaces hardened. External surfaces are zinc plated. Buna N o-rings are standard.
Unit weight	0.26 kg (0.57 lb)

## Performance



## Dimensions



## Installation Specifications

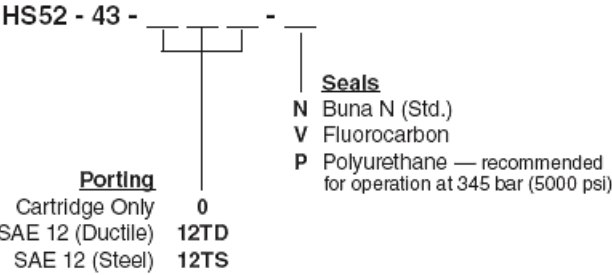
Cavity	VC12-4
Cartridge installation torque	44.7 to 50.2 N-m (33 to 37 ft-lb)

## Accessories

Seal kit	SK52-4N-MM	- <b>Note:</b> Buna N
	SK52-4V-MM	- <b>Note:</b> Viton
	SK52-4P-MM	- <b>Note:</b> Polyurethane



Order Code



Model Options

HS52-43-H-J

H Line Body

CODE	DESCRIPTION
0	No Body
10T	Aluminum SAE 10
12T	Aluminum SAE 12
6B	Aluminum BSPP 3/4" (6)

J Seal

CODE	DESCRIPTION
N	Buna-N
V	Fluorocarbon
P	Polyurethane