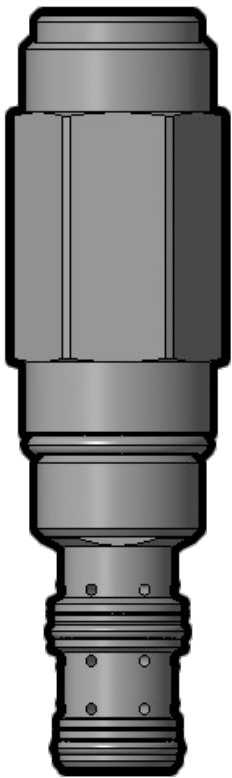


Overview



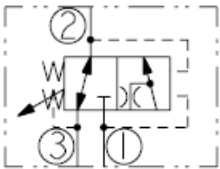
Description

This is a direct acting spool type, hydraulic sequence valve with an internal pilot and spring chamber drain. It is designed to direct flow to a secondary circuit once a predetermined pressure is attained in a primary circuit. The valve will remain shifted until the pressure in the secondary circuit falls below secondary pressure setting.

Features

- Adjustments cannot be backed out of the valve.
- Adjustments prohibit springs from going solid.
- Optional spring ranges to 144.8 bar (2100 psi).
- Hardened spool and cage for long life.
- Industry-common size.

Symbol



Ratings

Pressure Ratings

Operating pressure	207 bar (3000 psi)	- Note: Ports 1, 2
Crack pressure defined	Evident at port 1 when 0.95 lpm (0.25 gpm) attained at port 1 to port 2	

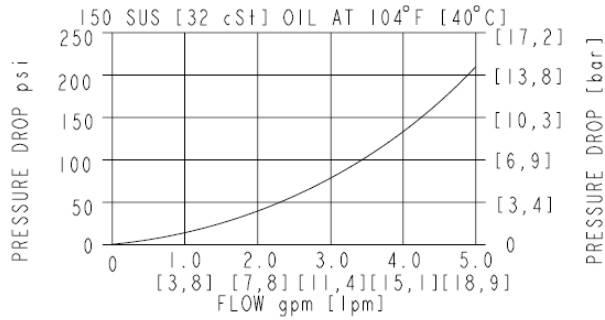
Temperature Ratings

Operating fluid temperature	-40 to 121 °C (-40 to 250 °F)	- Note: With Buna N seals
	-35 to 204 °C (-31 to 400 °F)	- Note: With Viton seals

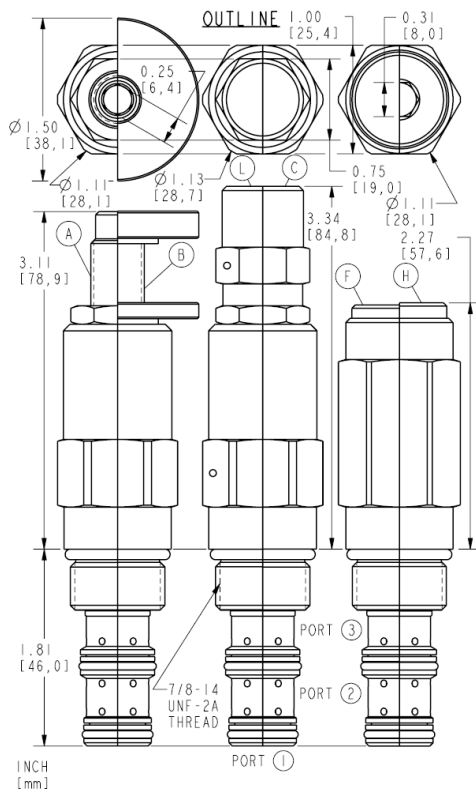
Properties

Unit weight	0.26 kg (0.58 lb)	- Note: KS10-30A
	0.29 kg (0.63 lb)	- Note: KS10-30B
	0.31 kg (0.68 lb)	- Note: KS10-30C, KS10-30L
	0.25 kg (0.56 lb)	- Note: KS10-30F, KS10-30H

Performance



Dimensions



Installation Specifications

Cavity	VC10-3
Cartridge installation torque	27.1 to 32.5 N-m (20 to 24 ft-lb)
H style plug torque	33.9 N-m (25 ft-lb)

Accessories

Seal kit	SK10-3N-BB	- Note: Buna N
	SK10-3V-BB	- Note: Viton

Order Code

KS10-30X-0-X-XXX/XXX	
BASE MODEL NUMBER: ADJUSTMENT OPTIONS: 0.25 [6.4] HEX ALLEN HEAD A Ø1.50 [38.1] ALUMINUM KNOB B OPTION A WITH COVER CAP C FACTORY PRESET, NONADJUSTABLE F FACTORY PRESET, HIDDEN ADJUSTMENT H OPTION C WITH LOCK WIRE HOLES L	PRIMARY PRESSURE SETTING: X 100 psi SECONDARY PRESSURE SETTING: (A) 100 psi [6.9 bar] (B) 150 psi [10.3 bar] (C) 200 psi [13.8 bar] (D) 250 psi [17.2 bar] PRIMARY PRESSURE SETTING RANGE: (04) 50+ ⁺ - 400 psi [3.4+ ⁺ -27.6 bar] (15) 150+ ⁺ -1500 psi [10.3+ ⁺ -103.4 bar] (30) 350+ ⁺ -3000 psi [24.1+ ⁺ -206.8 bar] + SECONDARY PRESSURE
PORTING: CARTRIDGE ONLY (0)	
SEALS: VITON (V) BUNA N (N)	

Model Options



KS10-30F-H-J-R/S

F Adjustment Option

CODE	DESCRIPTION
A	1/4" Hex Allen Head
B	1-1/2" Diameter Aluminum Knob with Aluminum Lock Knob
C	1/4" Hex Allen Head with Cover Cap
F	Factory Preset Non-Adjustable
H	Factory Preset Hidden Adjustment
L	1/4" Hex Allen Head with Cover Cap and Lockwire Holes

H Line Body

CODE	DESCRIPTION
0	No Body
6T	Aluminum SAE 6
8T	Aluminum SAE 8
6TD	Ductile Iron SAE 6
8TD	Ductile Iron SAE 8
3B	Aluminum BSPP 3/8" (3)
3BD	Ductile Iron BSPP 3/8" (3)

J Seal

CODE	DESCRIPTION
N	Buna-N
V	Fluorocarbon
P	Polyurethane
U	PPDI Urethane

R Spring

CODE	DESCRIPTION
04A	3.4 to 27.6 bar (50 to 400 psi) Spring Range
04B	3.4 to 27.6 bar (50 to 400 psi) Spring Range
04C	3.4 to 27.6 bar (50 to 400 psi) Spring Range
04D	3.4 to 27.6 bar (50 to 400 psi) Spring Range
15A	10.3 to 103.4 bar (150 to 1500 psi) Spring Range
15B	10.3 to 103.4 bar (150 to 1500 psi) Spring Range
15C	10.3 to 103.4 bar (150 to 1500 psi) Spring Range
15D	10.3 to 103.4 bar (150 to 1500 psi) Spring Range
30A	24.1 to 206.8 bar (350 to 3000 psi) Spring Range
30B	24.1 to 206.8 bar (350 to 3000 psi) Spring Range
30C	24.1 to 206.8 bar (350 to 3000 psi) Spring Range
30D	24.1 to 206.8 bar (350 to 3000 psi) Spring Range

S Setting



CODE	DESCRIPTION
MXXX	Spring Setting in XXX bar
XX	Spring Setting in XX psi (x 100)