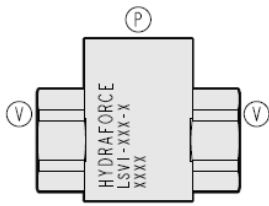




Overview



Description

The LSV1 is an in-line plumbed, low leak, load shuttling hydraulic check valve for use as a directional selector.

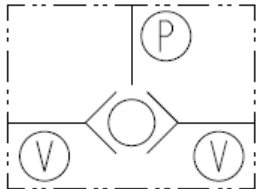
Operation

The LSV1 will allow flow from the higher pressure of either "V" port to "P" port.

Features

- Rapid response to load direction changes.
- Inline body for easy external plumbing
- Choice of port styles

Symbol



Ratings

Pressure Ratings

Pressure rating 241 bar (3500 psi)

Flow Ratings

Flow rating See performance graph

Maximum internal leakage 0.05 ml/min (1 drops/min) - **Note:** At 207 bar (3000 psi)

Temperature Ratings

| | | |
|-----------------------------|-------------------------------|--|
| Operating fluid temperature | -40 to 100 °C (-40 to 212 °F) | - Note: With buna N seals |
| | -26 to 204 °C (-15 to 400 °F) | - Note: With fluorocarbon seals |
| | -54 to 107 °C (-65 to 225 °F) | - Note: With polyurethane seals |
| Storage temperature | -40 to 70 °C (-40 to 160 °F) | |
| Ambient temperature | -40 to 90 °C (-40 to 194 °F) | |

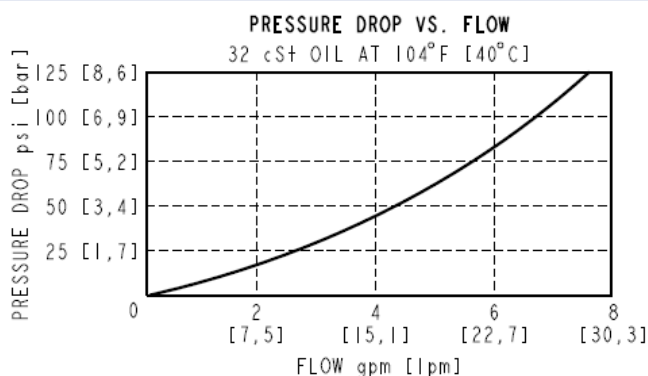
Operating Parameters

| | |
|---------------------------------------|--|
| Fluids | Mineral based or synthetic hydraulic fluid with lubricating properties |
| Fluid viscosity range | 7.4 to 420 cSt |
| Maximum operating contamination level | 20/18/14 per ISO 4406 |

Properties

| | | |
|-------------|-------------------|---------------------------|
| Unit weight | 0.12 kg (0.27 lb) | - Note: LSV1-2P/6T |
| | 0.21 kg (0.46 lb) | - Note: LSV1-6TS |

Performance



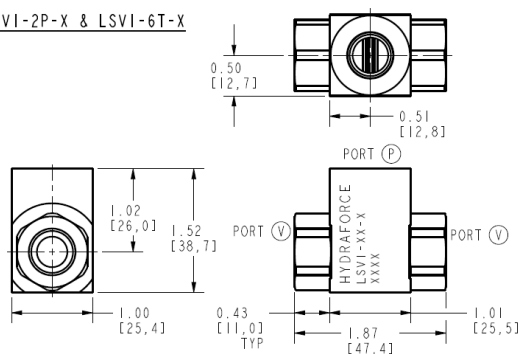


Dimensions

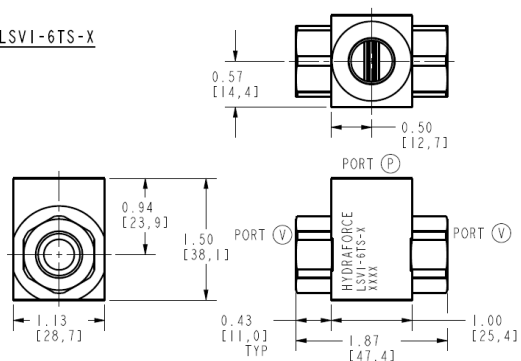
INCH
[mm]

OUTLINE

LSVI-2P-X & LSVI-6T-X



LSVI-6TS-X



ALL DIMENSIONS ARE FOR REFERENCE ONLY.

Accessories

Seal kit

Non-serviceable

Order Code

ORDERING INFORMATION

LSVI-XXX-X

BASE MODEL
NUMBER

PORTING:

SAE 6 - 6T
SAE 6 (STEEL) - 6TS

SEALS:

BUNA N - N
VITON - V
POLYURETHANE - P

Model Options

LSV1-H-J

H Porting

| CODE | DESCRIPTION |
|------|----------------|
| 6T | Aluminum SAE 6 |
| 6TS | Steel SAE 6 |

J Seals

| CODE | DESCRIPTION |
|------|--------------|
| N | Buna N |
| V | Fluorocarbon |
| P | Polyurethane |