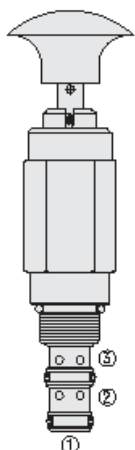




## Overview



### Description

The MP08-34X is a 3-way, manual pull to shift, spring return, directional hydraulic cartridge valve.

### Operation

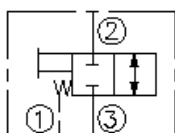
In its neutral position the valve blocks flow between ports 2 and 3. In the actuated (pulled) position, it allows flow between ports 2 and 3. The spring chamber is vented at port 1. When released, the valve returns to its neutral position.

**note:** pressure at port 1 will directly act on the spool and spring. Port 1 is intended to be a tank port only.

### Features

- Hardened spool and cage for long life.
- Pressure to 14 bar (200 psi) on port 1.
- Optional rotational lock position.
- Compact, industry-common cavity.

### Symbol



## Ratings

### Pressure Ratings

Pressure rating	241 bar (3500 psi)	- <b>Note:</b> Port 2 and 3
	14 bar (200 psi)	- <b>Note:</b> Port 1 maximum

### Flow Ratings

Flow rating	See performance graph
Maximum internal leakage	33 ml/min (2 in <sup>3</sup> /min) - <b>Note:</b> At 207 bar (3000 psi)

### Temperature Ratings

Operating fluid temperature	-40 to 100 °C (-40 to 212 °F)	- <b>Note:</b> With buna N seals
	-26 to 204 °C (-15 to 400 °F)	- <b>Note:</b> With viton seals
	-54 to 107 °C (-65 to 225 °F)	- <b>Note:</b> With polyurethane seals
Storage temperature	-40 to 70 °C (-40 to 160 °F)	
Ambient temperature	-40 to 70 °C (-40 to 160 °F)	

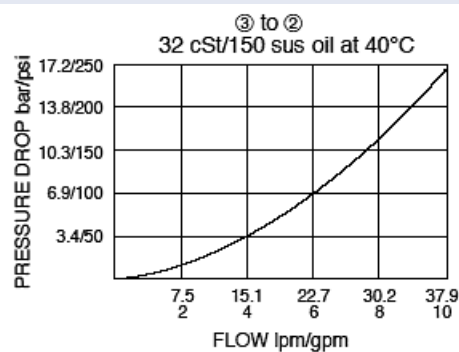
## Operating Parameters

Fluids	Mineral based or synthetic hydraulic fluid with lubricating properties
Fluid viscosity range	7.4 to 420 cSt
Maximum operating contamination level	20/18/14 per ISO 4406

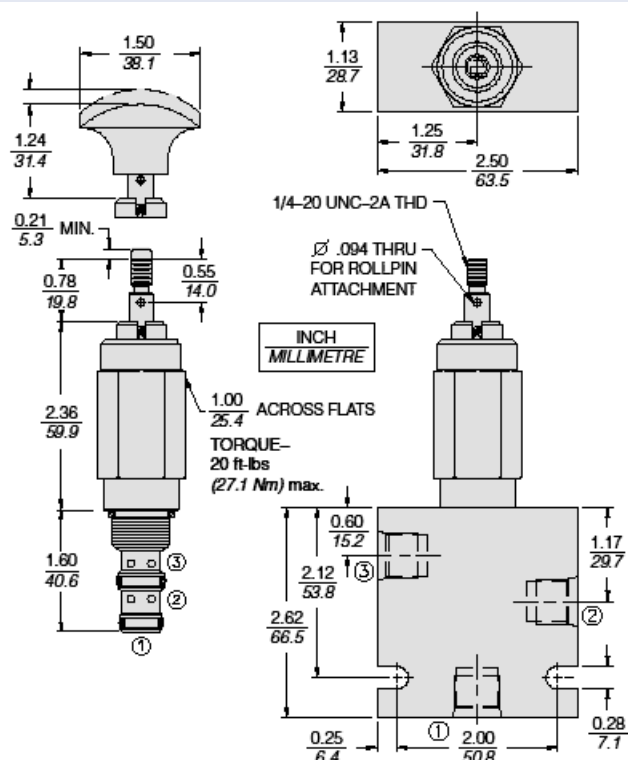
## Properties

Mechanical pull effort required	7.7 kg (17 lb)	- <b>Note:</b> Installed;
	9.5 kg (21 lb)	- <b>Note:</b> To start to open 2 to 3;
	10.0 kg (22 lb)	- <b>Note:</b> To detent
Unit weight	0.27 kg (0.6 lb)	
Internal wetted surface area	143 cm <sup>2</sup> (22.1 in <sup>2</sup> )	

## Performance



## Dimensions



## Installation Specifications

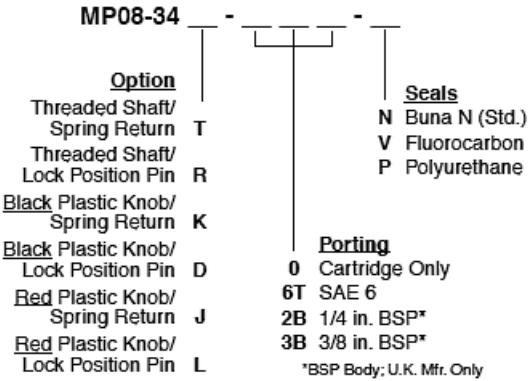
Cavity	VC08-3
Cartridge installation torque	25.8 to 28.5 N-m (19 to 21 ft-lb)
Orientation restriction	None

## Accessories

Seal kit	SK08-3X-MT	- <b>Note:</b> X = seal option
----------	------------	--------------------------------



Order Code



Model Options

MP08-34F-H-J

F Adjustment

CODE	DESCRIPTION
D	Black Plastic Knob with Lock Position Pin
J	Red Plastic Knob with Spring Return
K	Black Plastic Knob with Spring Return
L	Red Plastic Knob with Lock Position Pin
R	Threaded Shaft with Lock Position Pin
T	Threaded Shaft with Spring Return

H Line Body

CODE	DESCRIPTION
0	No Body
4T	Aluminum SAE 4
6T	Aluminum SAE 6
6TD	Ductile Iron SAE 6
8TD	Ductile Iron SAE 8
3B	Aluminum BSPP 3/8" (3)
3BD	Ductile Iron BSPP 3/8" (3)

J Seal

CODE	DESCRIPTION
N	Buna-N
V	Fluorocarbon
P	Polyurethane
U	PPDI Urethane