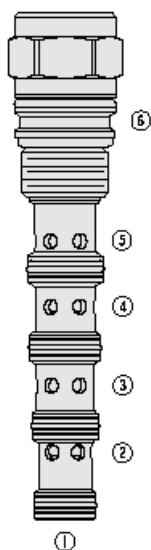




Overview



Description

The PD12-S61N is a screw-in, cartridge style, pilot operated, spool-type, hydraulic directional valve.

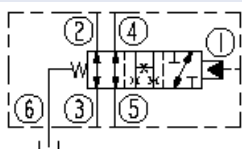
Operation

In the neutral position flow is allowed between ports 2 and 3 and between ports 4 and 5. On remote pilot signal at port 1 the valve's spool shifts to allow flow between ports 3 and 4, while blocking ports 2 and 5. The spring chamber is vented to the tank through port 6. The vented spring chamber allows the valve to be fully pressurized at ports 1, 2, 3, 4, and 5 without affecting required pilot pressure. Pressure at port 6 will affect required pilot pressure.

Features

- Hardened spool and cage for long life.
- 110 and 170 psi bias springs available.

Symbol



Ratings

Pressure Ratings

Pressure rating 241 bar (3500 psi)

Temperature Ratings

Operating fluid temperature -40 to 120 °C (-40 to 248 °F)

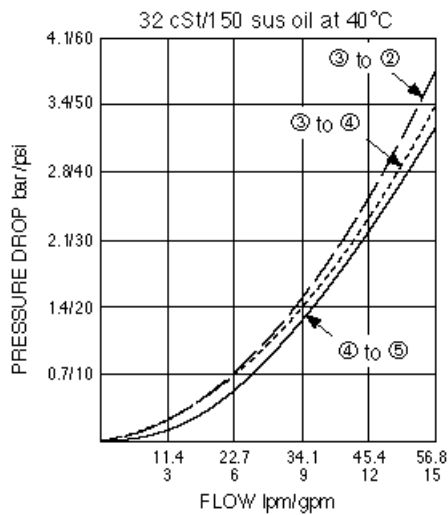
Flow Ratings

Maximum internal leakage 246 ml/min (15 in³/min) - **Note:** At 207 bar (3000 psi)

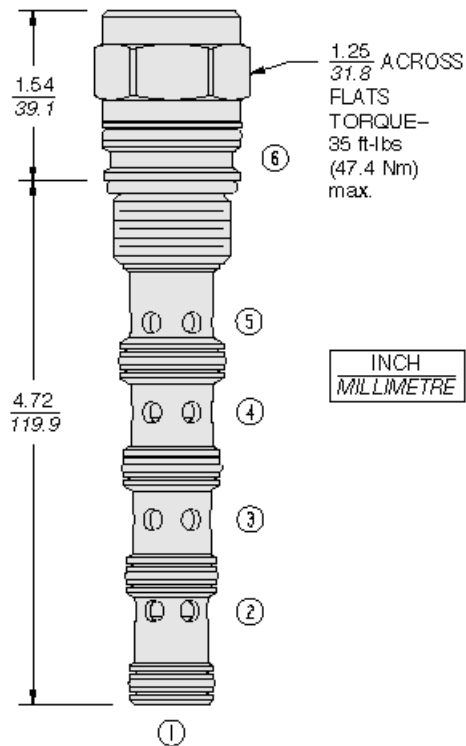
Properties

Materials Steel with work surfaces hardened, external surfaces are zinc plated. Buna N o-rings standard

Performance



Dimensions

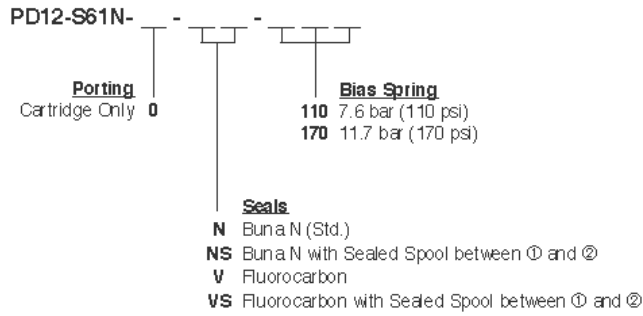


Installation Specifications

| | |
|-------------------------------|-----------------------------------|
| Cavity | VC12-S6 |
| Cartridge installation torque | 44.7 to 50.2 N-m (33 to 37 ft-lb) |



Order Code



Model Options

PD12-S61N-H-J-R

H Line Body

| CODE | DESCRIPTION |
|------|--------------------------|
| 0 | No Body |
| 8TD | Ductile Iron SAE 8 |
| 10TD | Ductile Iron SAE 10 |
| 12TD | Ductile Iron SAE 12 |
| 6BD | Ductile Iron 3/4 in BSPP |

J Seal

| CODE | DESCRIPTION |
|------|-----------------------------------|
| N | Buna-N |
| NS | Buna-N with a Sealed Spool |
| V | Fluorocarbon |
| VS | Fluorocarbon with a Sealed Spool |
| P | Polyurethane |
| PS | Polyurethane with a Sealed Spool |
| U | PPDI Urethane |
| US | PPDI Urethane with a Sealed Spool |

R Spring

| CODE | DESCRIPTION |
|------|---------------------|
| 110 | 110 psi Bias Spring |
| 170 | 170 psi Bias Spring |