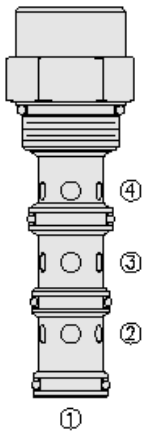




Overview



Description

The PD16-41 is a screw-in, cartridge style, pilot operated, spool-type hydraulic directional valve.

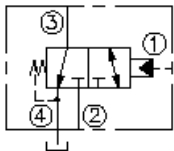
Operation

In the neutral position the valve allows flow from port 3 to 4 bidirectionally, while port 2 is blocked. On remote pilot signal at port 1 the valve shifts to open from 3 to 2, while blocking flow to port 4. Since port 4 is common to the spring chamber, pressure on port 4 will directly (1:1) affect the pilot pressure required and must be added to the bias spring value.

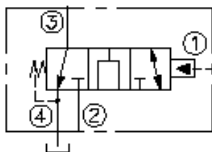
Features

- Hardened spool and cage for long life.
- Optional sealed pilot
- Industry-common cavity.

Symbol



Open Transition:



Ratings

Pressure Ratings

Pressure rating 241 bar (3500 psi)

Temperature Ratings

Operating fluid temperature -40 to 120 °C (-40 to 248 °F)

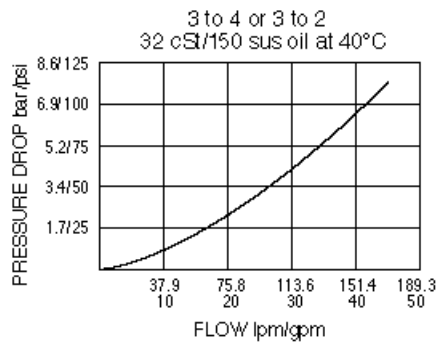
Flow Ratings

Maximum internal leakage 245 ml/min (15 in³/min) - **Note:** At 207 bar (3000 psi)
0 lpm (0 gpm) - **Note:** From port 1 to 2 with sealed spool at 207 bar (3000 psi)

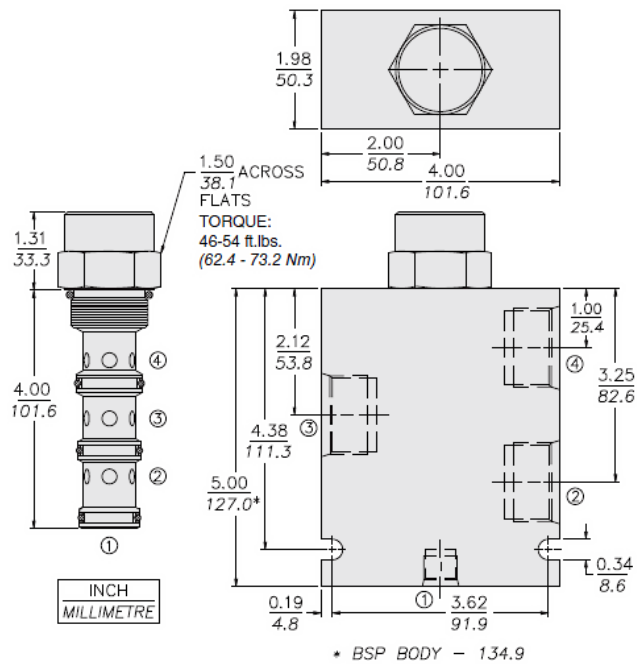
Properties

Materials steel with work surfaces hardened, external surfaces are zinc plated
Unit weight 0.52 kg (1.15 lb)

Performance



Dimensions



Installation Specifications

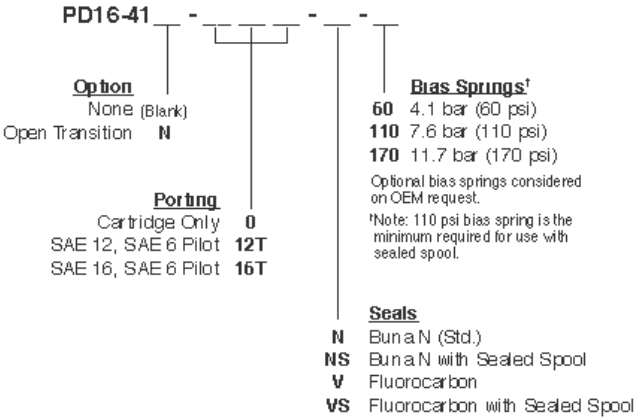
Cavity	VC16-4
Cartridge installation torque	62.4 to 73.2 N-m (46 to 54 ft-lb)

Accessories

Seal kit	SK16-4N-MMM	- Note: Buna N
	SK16-4V-MMM	- Note: Viton
	SK16-4P-MMM	- Note: Polyurethane



Order Code



Model Options

PD16-41B-H-J-R

B Spool Option

CODE	DESCRIPTION
BLANK	Standard
N	Normally Open in Transition

H Line Body

CODE	DESCRIPTION
0	No Body
16T	Aluminum SAE 16
12TD	Ductile Iron SAE 12
16TD	Ductile Iron SAE 16

J Seal

CODE	DESCRIPTION
N	Buna-N
NS	Buna-N with a Sealed Spool
V	Fluorocarbon
VS	Fluorocarbon with a Sealed Spool
P	Polyurethane
PS	Polyurethane with a Sealed Spool
U	PPDI Urethane
US	PPDI Urethane with a Sealed Spool

R Spring

CODE	DESCRIPTION
60	60 psi Bias Spring
80	80 psi Bias Spring
110	110 psi Bias Spring
170	170 psi Bias Spring