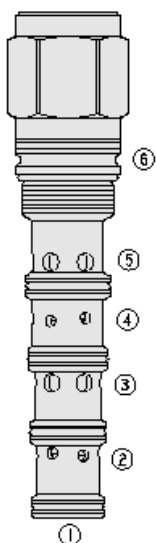




Overview



Description

The PE42-S67C is a screw-in, cartridge style, proportional, spring centered spool, pilot operated hydraulic directional valve.

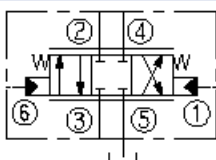
Operation

In neutral position all ports are blocked. On remote pilot signal at port 1 the valve's spool shifts proportionally to the applied pilot pressure to allow flow from port 3 to port 4, thru a load, such as hydraulic cylinder or motor, and then from port 2 to port 5 and to tank. On remote pilot signal at port 6 the valve's spool shifts proportionally to the applied pressure in opposite direction thus reversing the flow direction. The valve's spool is symmetrical providing meter-in and meter-out control.

Features

- Hardened spool and cage for long life.
- Cost-effective ISO cavity.
- Excellent metering characteristics.
- Good Linearity.

Symbol



Ratings

Pressure Ratings

Pressure rating	345 bar (5000 psi) 241 bar (3500 psi) 27.6 bar (400 psi)	- Note: Port 3 - Note: Ports 2, 4 - Note: Ports 1, 6
Proof pressure	690 bar (10000 psi)	
Burst pressure	1241 bar (18000 psi)	

Flow Ratings

Flow rating	See performance graph
-------------	-----------------------

Temperature Ratings

Operating fluid temperature	-40 to 100 °C (-40 to 212 °F) -26 to 204 °C (-15 to 400 °F) -54 to 107 °C (-65 to 225 °F) seals	- Note: With buna N seals - Note: With viton seals - Note: With polyurethane and urethane
Storage temperature	-40 to 70 °C (-40 to 160 °F)	
Ambient temperature	-40 to 70 °C (-40 to 160 °F)	

Operating Parameters

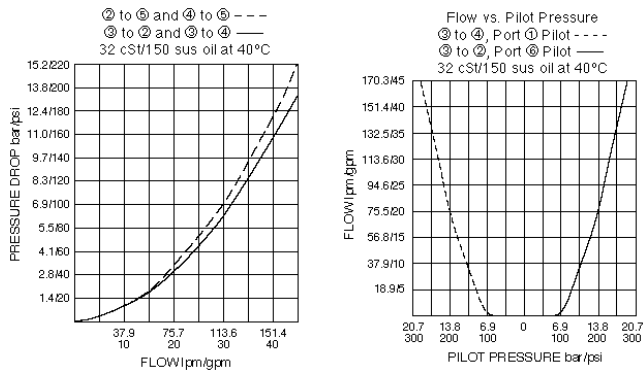
Fluids	Mineral based or synthetic hydraulic fluid with lubricating properties
Fluid viscosity range	7.4 to 420 cSt
Maximum operating contamination level	20/18/14 per ISO 4406

Properties

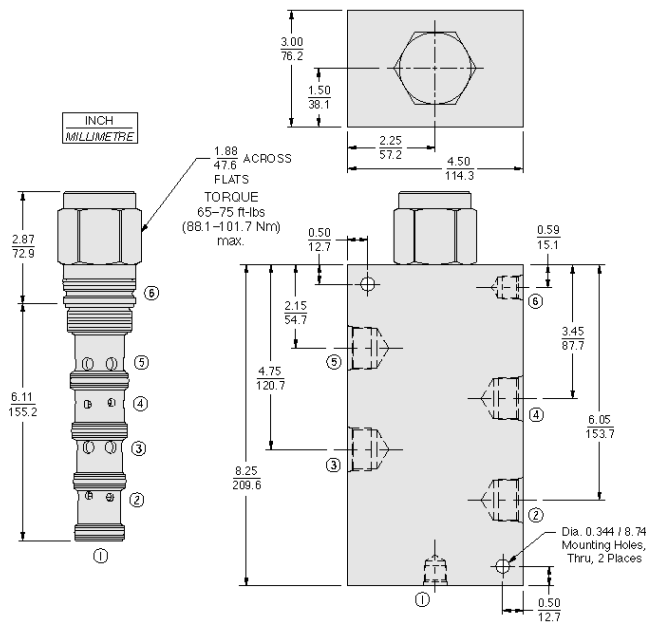
Displacement per stroke	2.46 cm ³ (0.15 in ³)	- Note: per stroke direction
Unit weight	0.76 kg (1.68 lb)	
Internal wetted surface area	976 cm ² (151.3 in ²)	



Performance



Dimensions



Installation Specifications

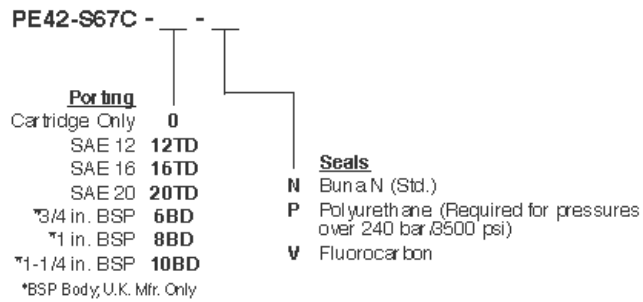
Cavity	VC42-S6
Cartridge installation torque	88.1 to 101.7 N-m (65 to 75 ft-lb)
Orientation restriction	None

Accessories

Seal kit	SK42-S6N-BMMMM	- Note: Buna N
	SK42-S6V-BMMMM	- Note: Viton
	SK42-S6P-BMMMM	- Note: Polyurethane
	SK42-S6U-B0000	- Note: Urethane



Order Code



Model Options

PE42-S67C-H-J

H Line Body

CODE	DESCRIPTION
0	No Body
20TD	Ductile Iron SAE 20

J Seal

CODE	DESCRIPTION
N	Buna-N
V	Fluorocarbon
P	Polyurethane
U	PPDI Urethane