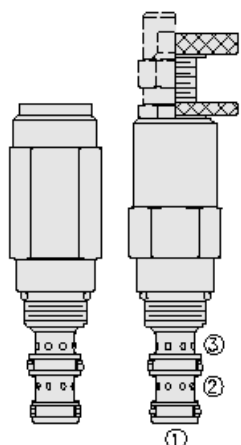
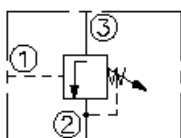




## Overview



### Symbol



### Description

PS08-32 is a screw-in, cartridge style, direct-acting, spool-type, hydraulic sequence valve with external pilot and internal spring chamber drain, designed to direct flow to a secondary circuit once a predetermined pressure level is attained in the primary circuit.

### Operation

In its steady state, the PS08-32X blocks flow from port 3 to port 2. On attainment of a pre-determined pressure at port 1, the cartridge shifts to open port 3 to port 2. Since the spring chamber is vented at port 2, back pressure at port 2 will directly (1:1) affect the valve's setting.

### Features

- Adjustments cannot be backed out of the valve.
- Adjustments prohibit springs from going solid.
- Optional spring ranges to 165.5 bar (2400 psi).
- Hardened spool and cage for long life.
- Compact, industry-common size.

## Ratings

### Pressure Ratings

Pressure rating	206.8 bar (3000 psi)
Proof pressure	482.6 bar (7000 psi)
Burst pressure	896.3 bar (13000 psi)

### Flow Ratings

Flow rating	18.9 lpm (5 gpm)	<b>- Note:</b> Max at nominal setting
Maximum internal leakage	82 ml/min (5.0 in <sup>3</sup> /min)	

### Temperature Ratings

Operating fluid temperature	-40 to 100 °C (-40 to 212 °F)	<b>- Note:</b> With buna N seals
	-26 to 204 °C (-15 to 400 °F)	<b>- Note:</b> With fluorocarbon seals
	-54 to 107 °C (-65 to 225 °F)	<b>- Note:</b> With polyurethane seals
Storage temperature	-40 to 70 °C (-40 to 160 °F)	
Ambient temperature	-40 to 70 °C (-40 to 160 °F)	

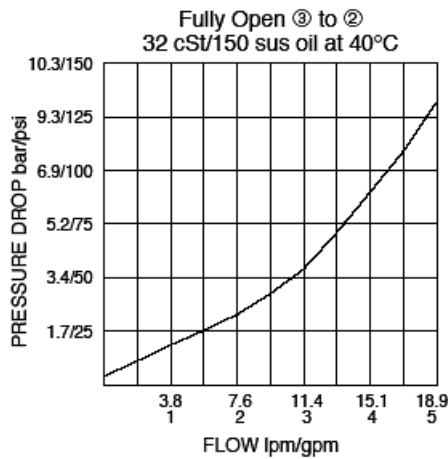
## Operating Parameters

Fluids	Mineral based or synthetic with lubricating properties
Fluid viscosity range	7.4 to 420 cSt
Maximum operating contamination level	18/16/13 per ISO 4406}

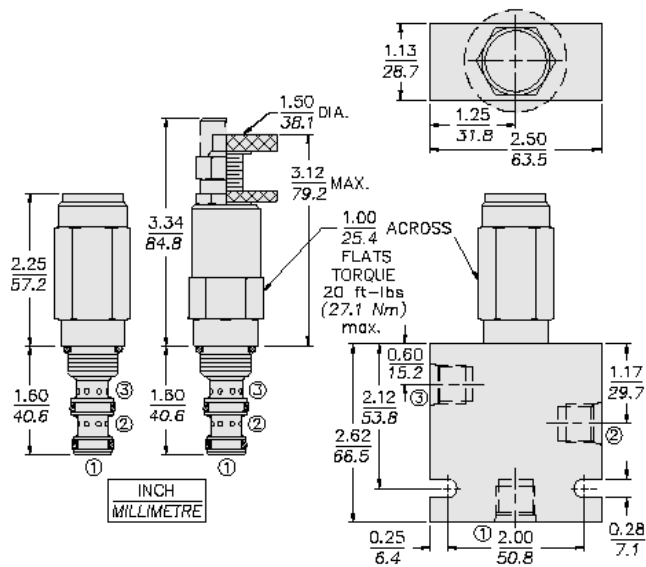
## Properties

Unit weight	0.23 kg (0.51 lb)	<b>- Note:</b> PS08-32A
	0.22 kg (0.49 lb)	<b>- Note:</b> PS08-32F PS08-32H
	0.25 kg (0.56 lb)	<b>- Note:</b> PS08-32B
	0.28 kg (0.61 lb)	<b>- Note:</b> PS08-32C PS08-32L
	128 cm <sup>2</sup> (19.9 in <sup>2</sup> )	<b>- Note:</b> PS08-30A PS08-30B PS08-30C PS08-30L
Internal wetted surface area	143 cm <sup>2</sup> (22.1 in <sup>2</sup> )	<b>- Note:</b> PS08-30F PS08-30H

## Performance



## Dimensions



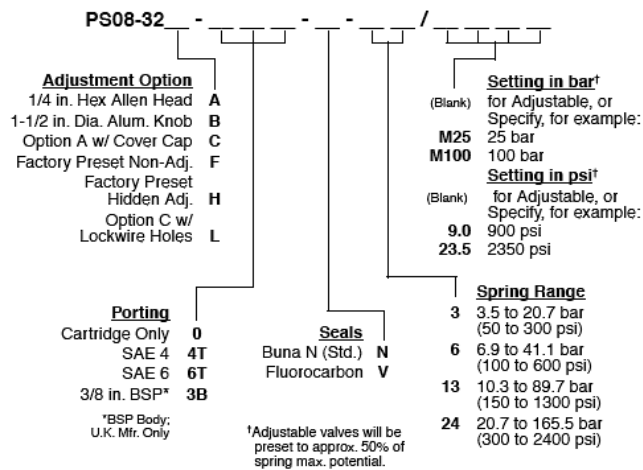
## Installation Specifications

Cavity	VC08-3
Cartridge installation torque	25.8 to 28.5 N-m (19 to 21 ft-lb)
H style plug torque	10.8 to 13.6 N-m (8 to 10 ft-lb)
Orientation restriction	None

## Accessories

Seal kit	SK08-3X-TB	- <b>Note:</b> X=seal option
----------	------------	------------------------------

## Order Code



## Model Options

### PS08-32F-H-J-R/S

#### F Adjustment Option

CODE	DESCRIPTION
A	1/4" Hex Allen Head
B	1-1/2" Diameter Aluminum Knob with Aluminum Lock Knob
C	1/4" Hex Allen Head with Cover Cap
F	Factory Preset Non-Adjustable
H	Factory Preset Hidden Adjustment
L	1/4" Hex Allen Head with Cover Cap and Lockwire Holes

#### H Line Body

CODE	DESCRIPTION
0	No Body
4T	Aluminum SAE 4
6T	Aluminum SAE 6
6TD	Ductile Iron SAE 6
8TD	Ductile Iron SAE 8
3B	Aluminum BSPP 3/8" (3)
3BD	Ductile Iron BSPP 3/8" (3)

#### J Seal

CODE	DESCRIPTION
N	Buna-N
V	Fluorocarbon
P	Polyurethane
U	PPDI Urethane

#### R Spring

CODE	DESCRIPTION
03	3.5 to 20.7 bar (50 to 300 psi) Spring Range
06	8.3 to 41.4 bar (120 to 600 psi) Spring Range
13	13.8 to 89.6 bar (200 to 1300 psi) Spring Range
24	20.7 to 165.5 bar (300 to 2400 psi) Spring Range



S Setting

CODE	DESCRIPTION
MXXX	Spring Setting in XXX bar
XX	Spring Setting in XX psi (x 100)