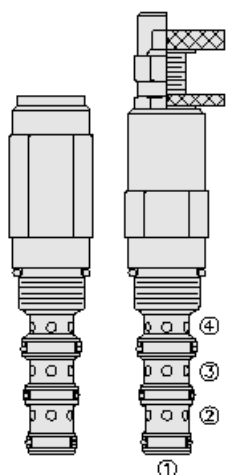




## Overview



### Description

The PS10-40X is a spool type, direct acting, adjustable, external pilot hydraulic sequence valve with externally vented spring chamber.

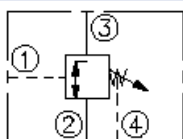
### Operation

The PS10-40X blocks flow between ports 2 and 3 bidirectionally. The spring chamber is constantly vented at port 4. On attainment of the valve pressure setting at port 1, the spool shifts to open ports 2 and port 3 bidirectionally. Pressure at port 4 is additive to the spring setting at a 1:1 ratio.

### Features

- Adjustments cannot be backed out of the valve.
- Adjustments prohibit springs from going solid.
- Optional spring ranges to 151.7 bar (2200 psi).
- Hardened precision spool and cage for long life.
- Industry-common size.

### Symbol



## Ratings

### Pressure Ratings

Pressure rating	206.8 bar (3000 psi)	- <b>Note:</b> Ports 1, 2, 3
	68.9 bar (1000 psi)	- <b>Note:</b> Port 4
Proof pressure	482.6 bar (7000 psi)	
Burst pressure	965.3 bar (14000 psi)	

### Flow Ratings

Flow rating	37.8 lpm (10 gpm)	
Maximum internal leakage	82 ml/min (5 in <sup>3</sup> /min)	- <b>Note:</b> Max to 85% of pressure setting

### Temperature Ratings

Operating fluid temperature	-40 to 100 °C (-40 to 212 °F)	- <b>Note:</b> With buna N seals
	-26 to 204 °C (-15 to 400 °F)	- <b>Note:</b> With fluorocarbon seals
	-54 to 107 °C (-65 to 225 °F)	- <b>Note:</b> With polyurethane seals with urethane seals
Storage temperature	-40 to 70 °C (-40 to 160 °F)	
Ambient temperature	-40 to 70 °C (-40 to 160 °F)	

### Other Ratings

Corrosion protection	(gps10-40x) 960 hr salt spray per ASTM b117
----------------------	---

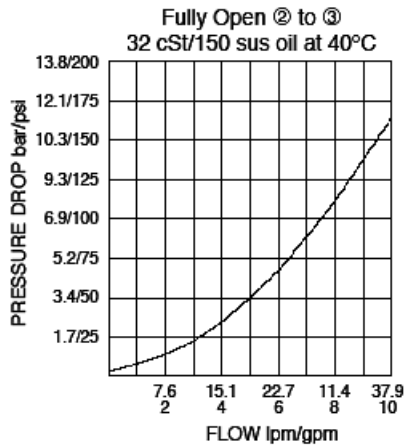
## Operating Parameters

Fluids	Mineral based or synthetic hydraulic fluid with lubricating properties
Fluid viscosity range	7.4 to 420 cSt
Maximum operating contamination level	20/18/14 per ISO 4406

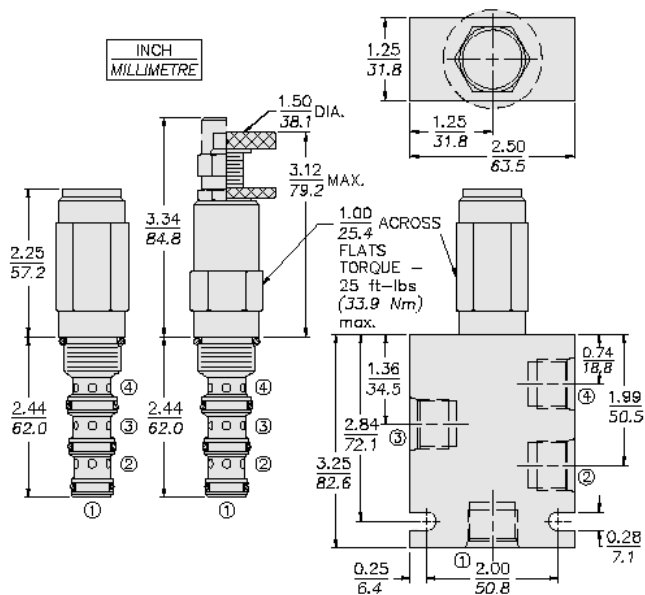
## Properties

Unit weight	0.29 kg (0.64 lb)	- <b>Note:</b> PS10-40A
	0.31 kg (0.69 lb)	- <b>Note:</b> PS10-40B
Internal wetted surface area	0.34 kg (0.74 lb)	- <b>Note:</b> PS10-40C
	0.28 kg (0.62 lb)	- <b>Note:</b> PS10-40F
	0.28 kg (0.61 lb)	- <b>Note:</b> PS10-40H
	0.34 kg (0.74 lb)	- <b>Note:</b> PS10-40L
	150 cm <sup>2</sup> (23.3 in <sup>2</sup> )	- <b>Note:</b> PS10-40A PS10-40B PS10-40C PS10-40L
	163 cm <sup>2</sup> (25.3 in <sup>2</sup> )	- <b>Note:</b> PS10-40F PS10-40H

## Performance



## Dimensions



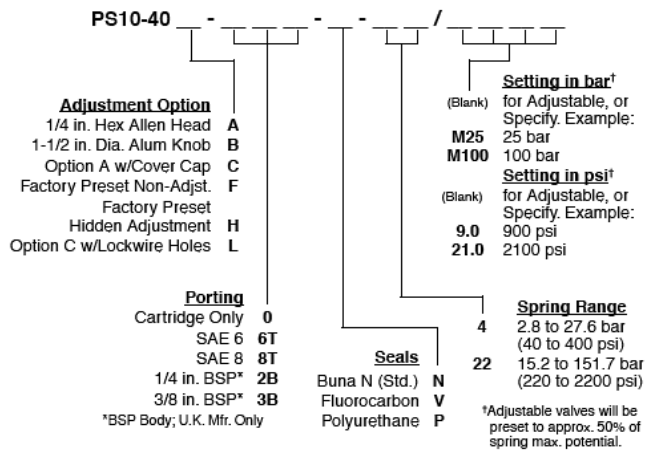
## Installation Specifications

Cavity	VC10-4
H style plug torque	10.8 to 13.6 N-m (8 to 10 ft-lb)
Cartridge installation torque	32.5 to 35.3 N-m (24 to 26 ft-lb)
Orientation restriction	None

## Accessories

Seal kit	SK10-4X-BMM SK10-4U-OOO	- <b>Note:</b> X = n, v, P
----------	----------------------------	----------------------------

## Order Code



## Model Options

### PS10-40F-H-J-R/S

#### F Adjustment Option

CODE	DESCRIPTION
A	1/4" Hex Allen Head
B	1-1/2" Diameter Aluminum Knob with Aluminum Lock Knob
C	1/4" Hex Allen Head with Cover Cap
F	Factory Preset Non-Adjustable
H	Factory Preset Hidden Adjustment
L	1/4" Hex Allen Head with Cover Cap and Lockwire Holes

#### H Line Body

CODE	DESCRIPTION
0	No Body
6T	Aluminum SAE 6
8T	Aluminum SAE 8
6TD	Ductile Iron SAE 6

#### J Seal

CODE	DESCRIPTION
N	Buna-N
V	Fluorocarbon
P	Polyurethane
U	PPDI Urethane

#### R Spring

CODE	DESCRIPTION
04	2.8 to 27.6 bar (40 to 400 psi) Spring Range
08	to 55.2 bar ( to 800 psi) Spring Range
22	15.2 to 151.7 bar (220 to 2200 psi) Spring Range

#### S Setting

CODE	DESCRIPTION
MXXX	Spring Setting in XXX bar
XX	Spring Setting in XX psi (x 100)