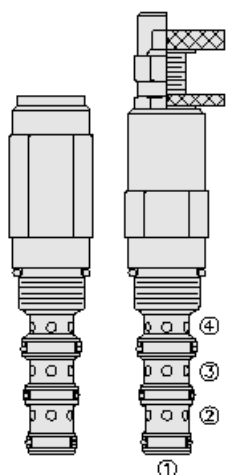




Overview



Description

The PS10-43X is a spool type, pilot operated, hydraulic sequence valve with external pilot and internal spring chamber drain. It is designed to function as a remote pilot-operated three-way valve.

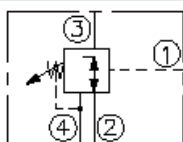
Operation

In neutral (unpiloted), the PS10-43X allows flow to pass bidirectionally from port 3 to port 2, while blocking at port 4. The spring chamber is constantly drained at port 4. Upon attainment of a predetermined pressure at port 1, the spool shifts to close port 3 to port 2, while opening port 3 to port 4.

Features

- Adjustments cannot be backed out of the valve.
- Adjustments prohibit springs from going solid.
- Optional spring ranges to 151.7 bar (2200 psi).
- Hardened precision spool and cage for long life.
- Industry-common size.

Symbol



Ratings

Pressure Ratings

Pressure rating	207 bar (3000 psi) 68.9 bar (1000 psi)	- Note: Ports 1, 2, 3 - Note: Port 4
Proof pressure	241.3 bar (3500 psi) 68.9 bar (1000 psi)	- Note: Ports 1, 2, 3 - Note: Port 4
Burst pressure	965.3 bar (14000 psi)	

Flow Ratings

Flow rating	37.9 lpm (10 gpm)	
Maximum internal leakage	50 ml/min (3 in ³ /min) 50 ml/min (3 in ³ /min)	- Note: Port 3 to 4 (85% of nominal setting) - Note: Port 1 to 2 (85% of nominal setting) with added to port 1 207 bar (3000 psi)

Temperature Ratings

Operating fluid temperature	-40 to 100 °C (-40 to 212 °F) -35 to 204 °C (-31 to 400 °F) -54 to 107 °C (-65 to 225 °F)	- Note: With buna N seals - Note: With fluorocarbon seals - Note: With polyurethane seals
Storage temperature	-40 to 70 °C (-40 to 160 °F)	
Ambient temperature	-40 to 70 °C (-40 to 160 °F)	

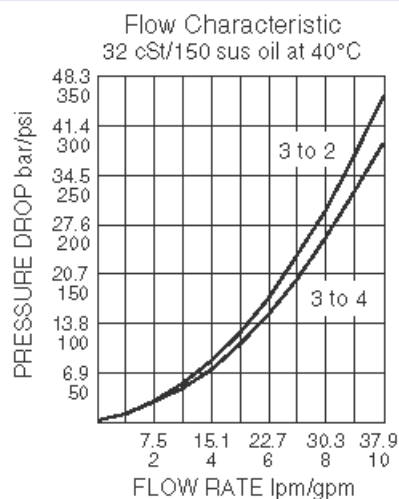
Operating Parameters

Fluids	Mineral based or synthetic with lubricating properties
Fluid viscosity range	7.4 to 420 cSt
Maximum operating contamination level	18/16/13 per ISO 4406

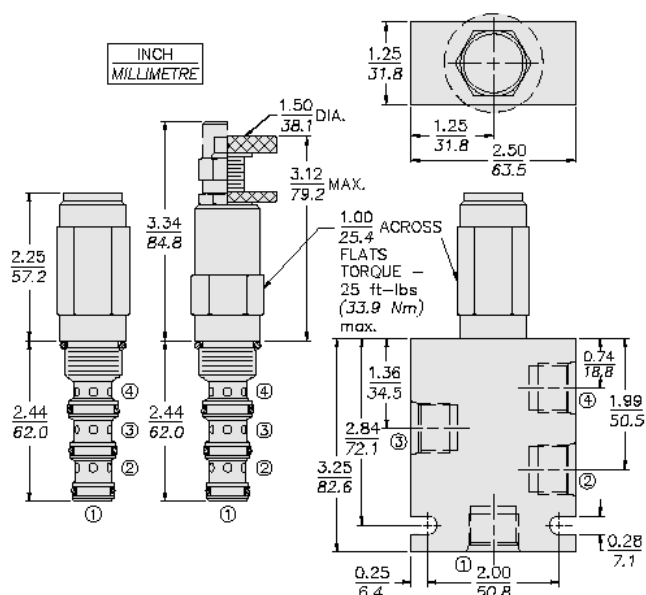
Properties

Unit weight	0.28 kg (0.61 lb)	- Note: PS10-43A
	0.31 kg (0.68 lb)	- Note: PS10-43B
	0.32 kg (0.70 lb)	- Note: PS10-43C PS10-43L
	0.27 kg (0.59 lb)	- Note: PS10-43F PS10-43H
		- Note: PS10-43A PS10-43B PS10-43C PS10-43L
Internal wetted surface area	184 cm ² (28.5 in ²)	- Note: PS10-43F PS10-43H
	184 cm ² (31.0 in ²)	

Performance



Dimensions



Installation Specifications

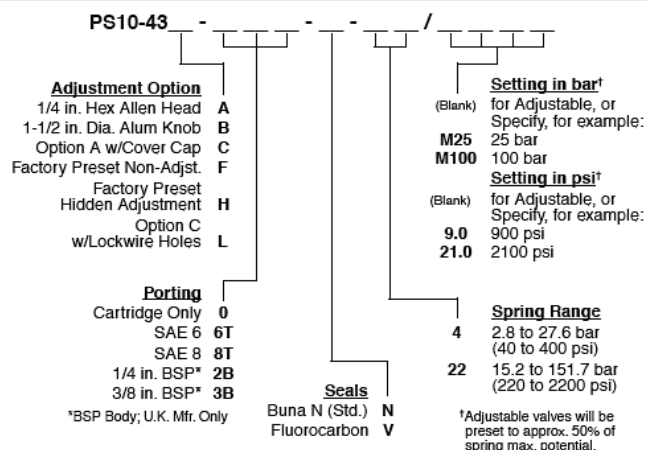
Cavity	VC10-4
Cartridge installation torque	33.9 to 36.7 N-m (25 to 27 ft-lb)
H style plug torque	34 to 36 N-m (25 to 27 ft-lb)
Orientation restriction	None

Accessories

Seal kit	SK10-4X-BMM	- Note: X = seal options
----------	-------------	---------------------------------



Order Code



Model Options

PS10-43F-H-J-R/S

F Adjustment Option

CODE	DESCRIPTION
A	1/4" Hex Allen Head
B	1-1/2" Diameter Aluminum Knob with Aluminum Lock Knob
C	1/4" Hex Allen Head with Cover Cap
F	Factory Preset Non-Adjustable
H	Factory Preset Hidden Adjustment
L	1/4" Hex Allen Head with Cover Cap and Lockwire Holes

H Line Body

CODE	DESCRIPTION
0	No Body
6T	Aluminum SAE 6
8T	Aluminum SAE 8
6TD	Ductile Iron SAE 6

J Seal

CODE	DESCRIPTION
N	Buna-N
V	Fluorocarbon
P	Polyurethane
U	PPDI Urethane

R Spring

CODE	DESCRIPTION
04	2.8 to 27.6 bar (40 to 400 psi) Spring Range
22	15.2 to 151.7 bar (220 to 2200 psi) Spring Range

S Setting

CODE	DESCRIPTION
MXXX	Spring Setting in XXX bar
XX	Spring Setting in XX psi (x 100)