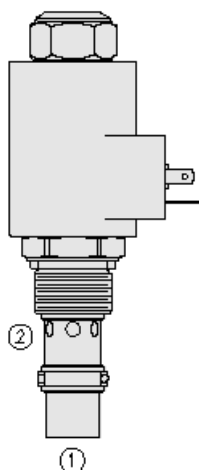




## Overview



### Description

PV72-20 is a solenoid-operated, two-port, pressure compensated, spool type, normally closed, proportional flow control valve.

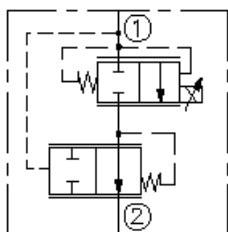
### Operation

The valve will regulate flow out of port 2 regardless of system working pressure. With an increasing current applied to the solenoid, output flow will increase.

### Features

- Choice of two regulated flow ranges
- Excellent linearity and hysteresis characteristics.
- Hardened spool and cage for long life.
- Efficient wet-armature construction.
- Optional coil voltages and terminations.
- Cartridges are voltage-interchangeable.
- Unitized molded coil design "waterproofing" standard.
- Manual override option.

### Symbol



## Ratings

### Pressure Ratings

Pressure rating	240 bar (3500 psi)
Proof pressure	345 bar (5000 psi)
Burst pressure	896 bar (13000 psi)

### Flow Ratings

Flow rating	0 to 64.4 lpm (0 to 17.0 gpm)	- Note: For "a" flow range;
	0 to 37.9 lpm (0 to 10.0 gpm)	- Note: For "b" flow range
Maximum internal leakage	0.38 lpm (0.1 gpm)	- Note: Max at 0 current
Hysteresis flow	lpm (gpm)	

### Temperature Ratings

Operating fluid temperature	-40 to 100 °C (-40 to 212 °F)	- Note: With buna N seals
	-26 to 204 °C (-15 to 400 °F)	- Note: With fluorocarbon seals
	-54 to 107 °C (-65 to 225 °F)	- Note: With polyurethane seals
Storage temperature	-40 to 70 °C (-40 to 160 °F)	
Ambient temperature	-40 to 70 °C (-40 to 160 °F)	

### Other Ratings

Corrosion protection	960 hr salt spray per ASTM b117
----------------------	---------------------------------

## Operating Parameters

Fluids	Mineral based or synthetic hydraulic fluid with lubricating properties
Fluid viscosity range	7.4 to 420 cSt
Maximum operating contamination level	18/16/13 per ISO 4406



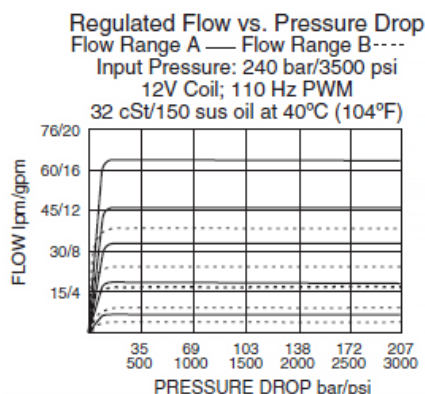
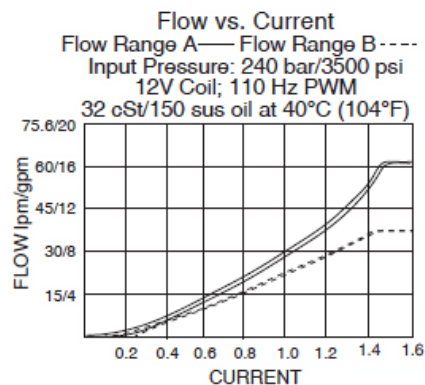
## Properties

Unit weight	0.40 kg (0.88 lb)	- <b>Note:</b> Blank option
	0.44 kg (0.98 lb)	- <b>Note:</b> "m" option
	0.55 kg (1.21 lb)	- <b>Note:</b> "g" option
Internal wetted surface area	283 cm <sup>2</sup> (43.8 in <sup>2</sup> )	- <b>Note:</b> Blank option
	348 cm <sup>2</sup> (53.9 in <sup>2</sup> )	- <b>Note:</b> "m" option "g" option

## Electrical Parameters

Note	With size 70 e-series and d-series coils	
Maximum control current	1500 mA	- <b>Note:</b> 12 V coil
	750 mA	- <b>Note:</b> 24 V coil
Threshold current	250 mA	- <b>Note:</b> 12 V coil
	125 mA	- <b>Note:</b> 24 V coil
Valve inductance	240 mH	- <b>Note:</b> E-coil 12 V
	200 mH	- <b>Note:</b> D-coil 12 V
	700 mH	- <b>Note:</b> E-coil 24 V
	600 mH	- <b>Note:</b> D-coil 24 V
Dither PWM frequency	100 to 250 Hz	

## Performance



## PV72-20



CODE	DESCRIPTION
BLANK	NONE
G	Variable Position Override, Red Knurled Knob with Cover Cap
M	Variable Position Override, Red Knurled Knob

## H Line Body

CODE	DESCRIPTION
0	No Body
10T	Aluminum SAE 10
12T	Aluminum SAE 12

## J Seal

CODE	DESCRIPTION
N	Buna-N
V	Fluorocarbon
P	Polyurethane
U	PPDI Urethane

## L Coil

CODE	DESCRIPTION
0	No Coil
12DG	12 VDC, D-Coil, DIN 43650
12DL	12 VDC, D-Coil, Dual Lead Wires
12DL/W	12 VDC, D-Coil, Dual Lead Wires with Weatherpak
12DS	12 VDC, D-Coil, Dual Spade
12ER	12 VDC, E-Coil, Deutsch
12EY	12 VDC, E-Coil, Metri-Pack 150
24DG	24 VDC, D-Coil, DIN 43650
24DL	24 VDC, D-Coil, Dual Lead Wires
24DS	24 VDC, D-Coil, Dual Spade
24ER	24 VDC, E-Coil, Deutsch