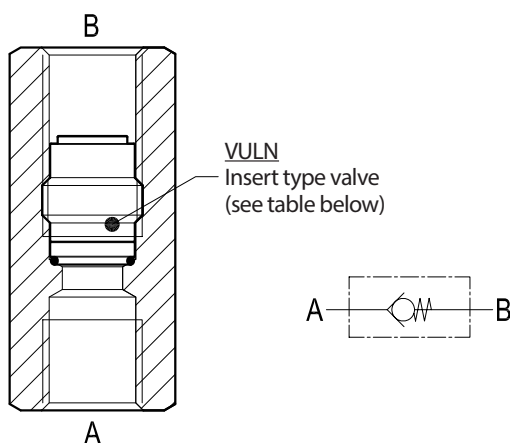


Check valves

Ball type with insert and female threaded sleeve

VULN-FF

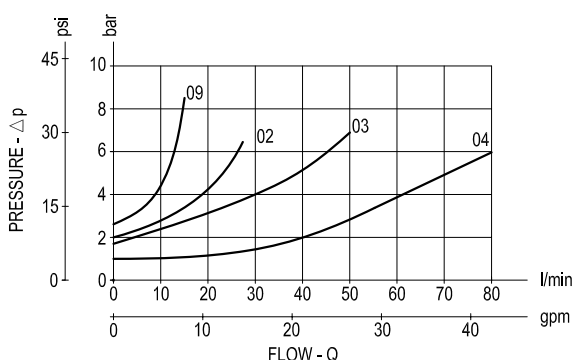
OE.U4.01.01-Y-Z



Description

This valve is composed by a sleeve with an inserted ball type check cartridge. Flow is always allowed to pass from A to B when pressure at A rises above the spring bias pressure and the ball is pushed from the seat. The valve is normally closed (checked) from B to A. The inserted cartridge can be reached from either port in order to be screwed-in or screwed-out with an Allen type key 3-4-5-6-8 mm, depending from the cartridge size, and from the port used.

Performance



Δp curves vs. flow in "A-B" free flow direction

As seen on the diagram, the cracking pressure is very low.

Advantages

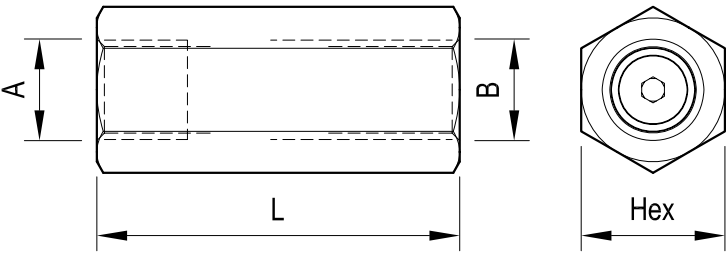
- Very compact design and inline mounting for space saving.
- Mounting position is unrestricted.
- Four sizes provide great adaptability to the system.

Technical data

VULN Code	Ports A-B	Pressure P max bar (psi)	Flow Q max l/min (gpm)	Weight kg (lbs)
0T.U4.01.00.09.00	G 1/4	210 (3000)	15 (4)	0.02 (0.04)
0T.U4.01.00.02.00	G 3/8	210 (3000)	30 (8)	0.03 (0.07)
0T.U4.01.00.03.00	G 1/2	210 (3000)	50 (13)	0.04 (0.09)
0T.U4.01.00.04.00	G 3/4	210 (3000)	80 (21)	0.07 (0.15)

Steel body, zinc plated

Dimensions



Ports size / Dimensions

Y	Ports A-B	L mm (inches)	Hex mm (inches)	Sleeve code
09	G 1/4	48 (1.89)	19 (0.75)	OC.51.02.001
02	G 3/8	52 (2.05)	22 (0.87)	OC.51.02.002
03	G 1/2	62 (2.44)	27 (1.06)	OC.51.02.003
04	G 3/4	70 (2.76)	36 (1.42)	OC.51.02.004

Z	CRACKING PRESSURE bar (psi)			
	G 1/4	G 3/8	G 1/2	G 3/4
00	2.3 (33.4)	1.75 (25.4)	1.75 (25.4)	0.3 (4.4)

Ordering code

OE.U4.01.01	Y	Z
Ball type with insert and female threaded sleeve	Ports size / Dimensions see table "Y"	Cracking pressure see table "Z"

Type	Material number	Type	Material number	Type	Material number
OEU401010201	R932007264				
OEU401010301	R932007265				
OEU401010401	R932007266				
OEU401010901	R932007263				