

Counterbalance, standard poppet type zero differential area Common cavity, Size 20

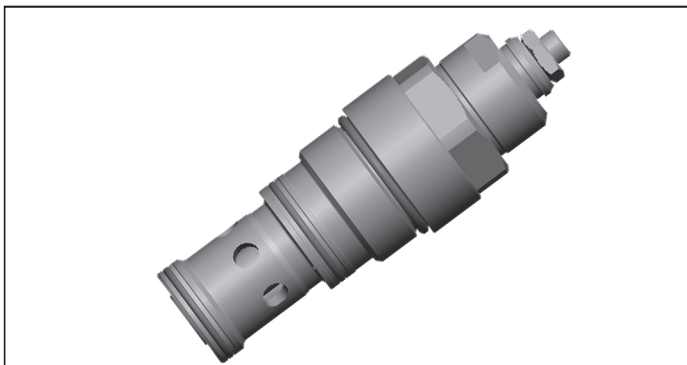
VBSZ-20A

04.52.41 - X - 58 - Z

RE 18319-99

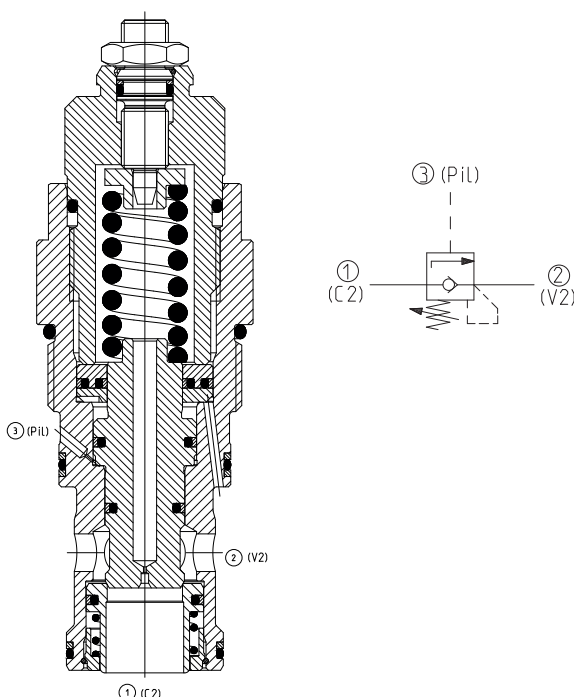
Edition: 05.2022

Replaces: 03.2016



Description

When pressure at 2 rises above the check spring bias pressure, the seat is pushed away from the piston and flow is allowed from 2 to 1. Reverse flow is locked, unless the pilot pressure at 3 rises above the piston spring bias pressure (adjustable). Any back-pressure at 2 is additive to the pressure setting. Valve design prevents spring going solid and complete unscrewing during adjusting.



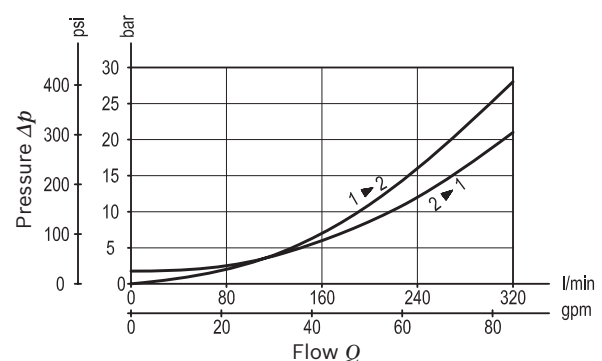
Technical data

Max. operating pressure	350 bar (5000 psi)
Max. flow	320 l/min (85 gpm)
Max. internal leakage ¹⁾	15 drops/min.
Fluid temperature range	-30 to 100 °C (-22 to 212 °F)
Installation torque	128 - 149 Nm (95 - 110 ft-lbs)
Weight	1.12 kg (2.5 lbs)
MTTFD	150 years see RE 18350-51
Cavity	CA-20A-3C (see data sheet 18325-70)
Adjustment	according to ISO 4413 with sealed adjustment screw to prevent oil leakage during adjustment
Salt spray test	500h according to DIN EN ISO 9227:2017-07
Lines bodies and standard assemblies	Please refer to section "Hydraulic integrated circuit" or consult factory
Seal kit	Code: RG20A9010530100 material no: R901111397
Fluids	Mineral-based or synthetics with lubricating properties at viscosities of 10 to 500 mm ² /s (cSt)
Recommended degree of fluid contamination	Nominal value max. 10µm (NAS 8) / ISO 4406 19/17/14
Installation position	No restrictions
Other Technical Data	See data sheet 18350-50

Pressure setting: at least 1.3 times the load induced pressure and maximum 1.5 times catalogue max nominal setting.

¹⁾ At 70% of pressure setting

Characteristic curve



Ordering code

04.52.41	X	58	Z	*	*
----------	---	----	---	---	---

Series M to Z
unchanged performances and dimensions

00 Standard (Buna)
V0 Viton (FKM)

	SPRINGS		
	Adj. press. range bar (psi)	Pressure increase bar/turn (psi/turn)	Std. setting bar (psi) cracking pressure
20	10-30 (145-450)	10 (145)	15 (220)

Note: Special settings available with optional tamperproof cap.
Contact factory authorized representative for ordering code.

Counterbalance,
standard poppet type zero differential
area

O-Ring on pilot piston

27 With O-Ring

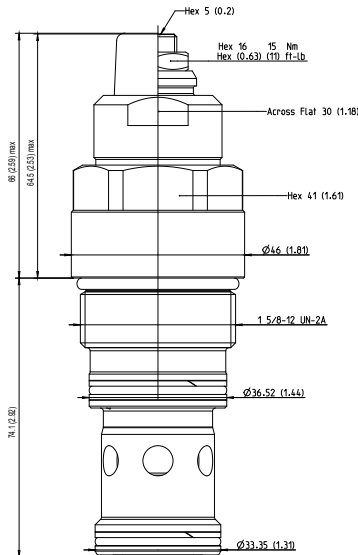
58 Common cavity, Size 20

Preferred types

Type	Material number
04524127582000M	R930081387

Type	Material number

Dimensions



OPTION
Protection cap orange
Mat. no. R900168151

Bosch Rexroth Oil Control S.p.A.
Via Leonardo da Vinci 5
P.O. Box no. 5
41015 Nonantola – Modena, Italy
Tel. +39 059 887 611
Fax +39 059 547 848
compact-hydraulics-cv@boschrexroth.com
www.boschrexroth.com/compacthydraulics

This document, as well as the data, specifications and other information set forth in it, are the exclusive property of Bosch Rexroth Oil Control S.p.a.. It may not be reproduced or given to third parties without its consent. The data specified above only serve to describe the product. No statements concerning a certain condition or suitability for a certain application can be derived from our information. The information given does not release the user from the obligation of own judgment and verification. It must be remembered that our products are subject to a natural process of wear and aging. Subject to change.