

Solenoid operated valves direct acting poppet type

2-way double lock

Bosch cavity, 20-01-0-03

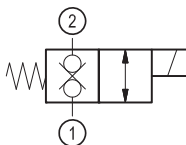
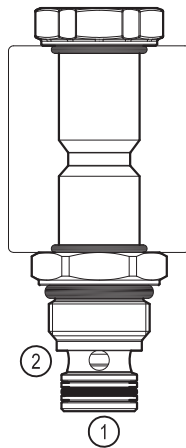
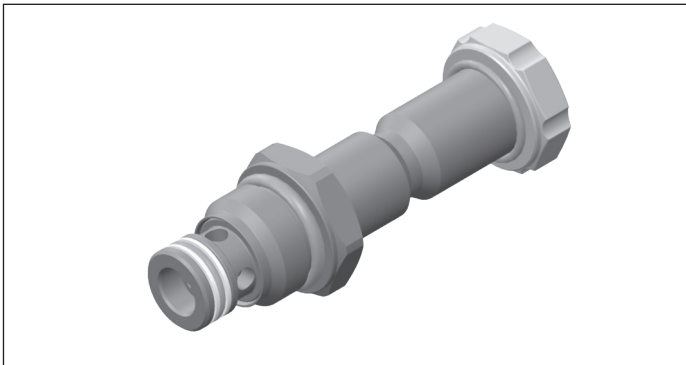
VEDT-16-NC

OD.11 - X - 39 - Y - Z

RE 18324-13

Edition: 06.2019

Replaces: 11.2017



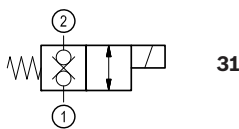
Technical data

General		
Weight		0.12 kg (0.26 lbs)
Installation orientation		Unrestricted
Storage ambient temperature range		-40 to 100 °C (-40 to 212 °F)
Operating ambient temperature range		-30 to 90 °C (-22 to 194 °F)
Hydraulic		
Max. operating pressure		up to 250 bar (3625 psi)
Max. flow		up to 15 l/min. (4 gpm)
Max. internal leakage		5 drops/min
Fatigue cycle life		1 million cycles at 250 bar
Fluid temperature range		-20 to 80 °C (-4 to 176 °F)
Fluids: Mineral-based or synthetics with lubricating properties at viscosities of 20 to 380 mm²/s (cSt)		
Installation torque		34 - 39 Nm (25 - 29 ft-lbs)
Recommended degree of fluid contamination		Nominal value max. 10 µm (NAS 8) ISO 4406 19/17/14
MTTFd		150 years see RE 18350-51
Bosch cavity		20-01-0-03
Seal kit	code	RG39E201053010
	material no.	R934003586
Seal kit coil and standard cap	code	RG02Z0010000100
	material no.	R930067869
Lines bodies and standard assemblies		Please refer to section “Hydraulic integrated circuit” or consult factory
Other technical data		See data sheet 18350-50
Electrical		
Type of voltage		DC voltage
Coil type		D36
Supply voltage		See data sheet 18325-90
Admitted voltage tolerance: see characteristic curves and table		
Power consumption		20 W
Type of protection		See data sheet 18325-90
Note: Coils must be ordered separately		

Ordering code

OD.11	X	39	Y	Z	0000	*
--------------	----------	-----------	----------	----------	-------------	----------

Solenoid operated valves
direct acting poppet type
2-way double lock



Series 0/A to L
unchanged performances and dimensions

0 = With Buna seal
V = With Viton seal

A = Standard
B = Push style manual override

Bosch cavity: 20-01-0-03

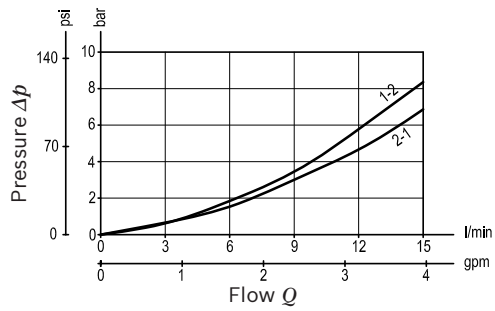
Type	Material number
OD113139A000000	R930058705
OD113139B000000	R930058695

Type	Material number

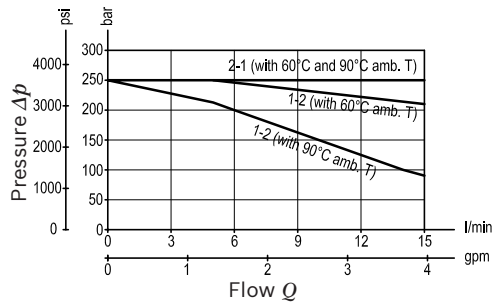
Characteristic curves

Version 31

Pressure drop



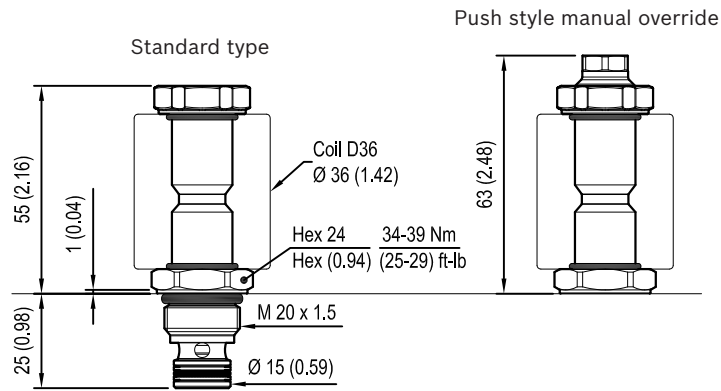
Performance limits at 100% duty cycle



Minimum switching voltage

Flow direction	Amb. T	Voltage required
2-1	60°C	-20% of V nominal
2-1	90°C	V nominal
1-2	60°C	-10% of V nominal
1-2	90°C	V nominal

Note: in case of need of performance limits at specific different working conditions, please consult factory.

Dimensions**Solenoid operated valves, direct acting
poppet type 2-way double lock****Bosch Rexroth Oil Control S.p.A.**

Via Leonardo da Vinci 5
P.O. Box no. 5
41015 Nonantola – Modena, Italy
Tel. +39 059 887 611
Fax +39 059 547 848
compact-hydraulics-cv@boschrexroth.com
www.boschrexroth.com/compacthydraulics

© This document, as well as the data, specifications and other information set forth in it, are the exclusive property of Bosch Rexroth Oil Control S.p.a.. It may not be reproduced or given to third parties without its consent. The data specified above only serve to describe the product. No statements concerning a certain condition or suitability for a certain application can be derived from our information. The information given does not release the user from the obligation of own judgment and verification. It must be remembered that our products are subject to a natural process of wear and aging. Subject to change.