

## Inlet Elements with LS connections

TE-03-\_\_-

**RE 18300-03**

Edition: 02.2016

Replaces: 07.2012



### Description

The inlet elements TE-03-\_\_ are employed to connect the external P, T lines to the P, T channels inside the ED elements of the Directional Valve Assembly and to connect to the LS ports of the elements equipped with LS channels. The TE-03-\_\_ inlet elements are available in two versions:

- Body made of Black Anodized Aluminium (AL), or
- Body made of Yellow Zinc plated (Cr+3) Cast Iron (CI).

Port sizes can be G 3/8, G 1/2 or SAE 8 (3/4" 16 UNF)  
LS ports are G 1/4 for BSPP versions, and SAE 4 (7/16" 20UNF 2B) for "UNF" versions.

### Technical data

General			
Inlet Element Type		AL Version	CI Version
TE-03-02-00	kg (lbs)	0.36 (0.80)	0.98 (2.16)
TE-03-03-00	kg (lbs)	0.40 (0.90)	1.01 (2.23)
TE-03-56-00	kg (lbs)	0.40 (0.90)	Not available
Ambient Temperature	°C (°F)	-20....+50 (-4....+122) (NBR seals)	
Hydraulic			
Maximum pressure for aluminium version (AL)	bar (psi)	250 (3625)	
Maximum pressure for Cast Iron version (CI)	bar (psi)	310 (4500)	
Maximum inlet flow	l/min (gpm)	50 (13.2)	
Hydraulic fluid General properties: it must have physical lubricating and chemical properties suitable for use in hydraulic systems such as, for example:		Mineral oil based hydraulic fluids HL (DIN 51524 part 1). Mineral oil based hydraulic fluids HLP (DIN 51524 part 2). For use of environmentally acceptable fluids (vegetable or polyglycol base) please consult us.	
Fluid Temperature	°C (°F)	-20....+80 (-4....+176) (NBR)	
Permissible degree of fluid contamination		ISO 4572: $\beta_x \geq 75$ X=12...15 ISO 4406: class 20/18/15 NAS 1638: class 9	
Viscosity range	mm²/s	5....420	

### Note

For applications with different specifications consult us

Ordering details

01	02	03	04	05
TE	-	03	-	

Family

01	Inlet Elements	TE
----	----------------	----

Configuration

02	With Load Sensing ports	03
----	-------------------------	----

Ports

03	G 3/8 DIN 3852	02
	G 1/2 DIN 3852	03
	3/4-16 UNF-2B (SAE8)	56

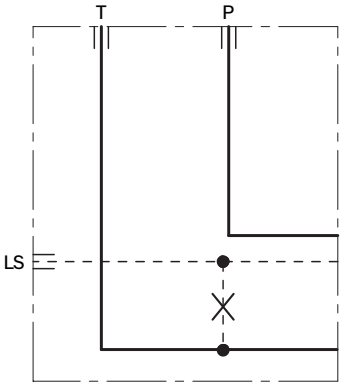
Size of drain orifice for LS

04	No drain	00
	0.3 mm (0.012 inch) orifice	01
	0.4 mm (0.016 inch) orifice	02
	0.5 mm (0.020 inch) orifice	03

Material

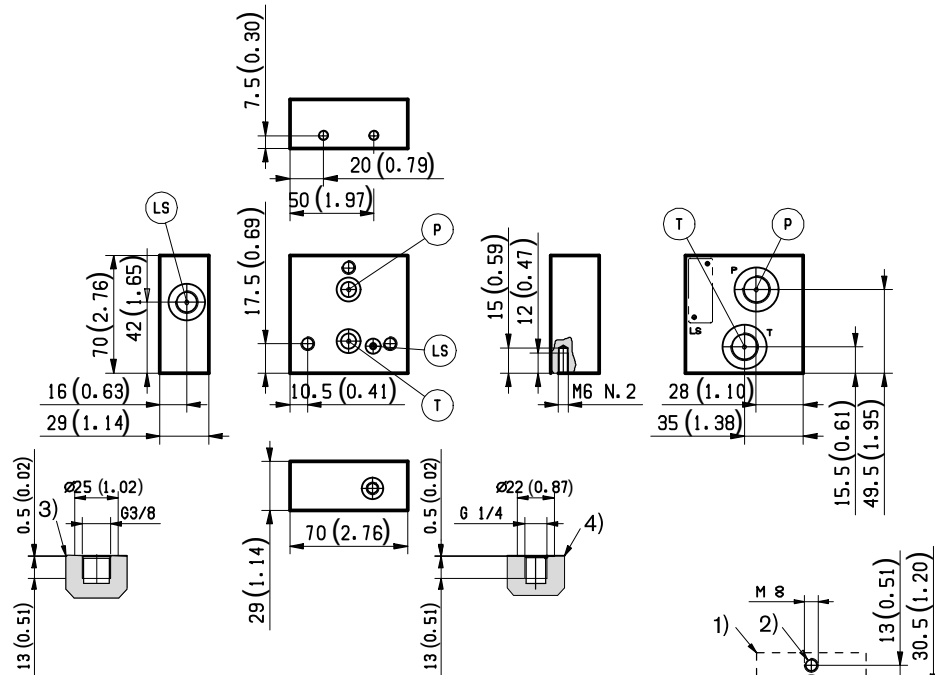
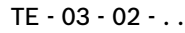
05	Cast Iron <sup>1)</sup>	CI
	Aluminium	AL

Symbol



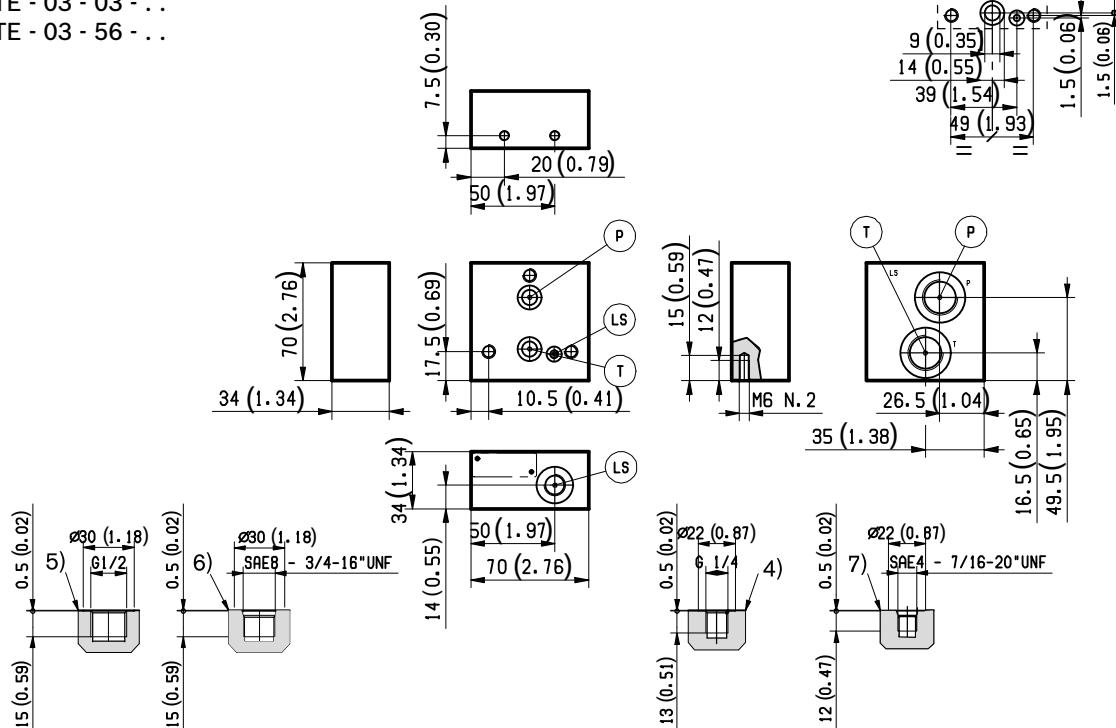
1) Only available for versions with G 3/8 and G 1/2 ports  
(TE-03-02-../TE-03-03-..)

## External dimensions and fittings



TE - 03 - 03 - ..

TE - 03 - 56 - ..



- |  |   |
|--|---|
| <b>1</b> Flange specifications for coupling to the ED Directional Valve Elements.  | <b>4</b> Load Sensing port (LS) G 1/4, for Inlet Elements TE-03-02... and TE-03-03... |
| <b>2</b> For tie rod and tightening torque information see data sheet RE 18301-90. | <b>5</b> Hydraulic Ports P-T G 1/2, for versions TE-03-03-...                         |
| <b>3</b> Hydraulic Ports P-T G 3/8, for Inlet Elements TE-03-02...                 | <b>6</b> Hydraulic Ports P-T SAE 8, for versions TE-03-56...                          |
|  | <b>7</b> Load Sensing port (LS) SAE 4, for Inlet Elements TE-03-56...                 |

**Bosch Rexroth Oil Control S.p.A.**

Oleodinamica LC Division  
Via Artigianale Sedrio, 12  
42030 Vezzano sul Crostolo  
Reggio Emilia - Italy  
Tel. +39 0522 601 801  
Fax +39 0522 606 226 / 601 802  
compact-hydraulics-cdv@boschrexroth.com  
[www.boschrexroth.com/compacthydraulics](http://www.boschrexroth.com/compacthydraulics)

© This document, as well as the data, specifications and other information set forth in it, are the exclusive property of Bosch Rexroth Oil Control S.p.a.. It may not be reproduced or given to third parties without its consent. The data specified above only serve to describe the product. No statements concerning a certain condition or suitability for a certain application can be derived from our information. The information given does not release the user from the obligation of own judgment and verification. It must be remembered that our products are subject to a natural process of wear and aging.  
Subject to change.