

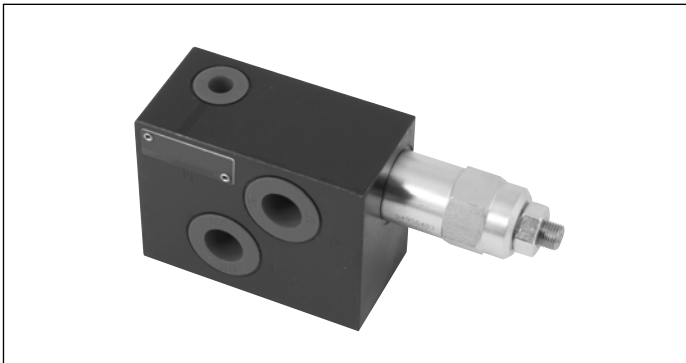
Inlet Elements with Pressure Reducing Valve on the P line

TE-11-__-

RE 18300-10

Edition: 02.2016

Replaces: 07.2012



Description

The inlet elements TE-11-__ are employed to connect the external P and T lines to the P and T channels inside the ED elements of the Directional Valve Assembly. They incorporate a 3-way pressure reducing / relieving cartridge which allows to control the primary pressure in the P line of the ED elements. The primary pressure can be adjusted and can be checked and through the Test Point port M. The TE-11-__ inlet elements are available with body made of Black Anodized Aluminium (AL).

Hydraulic Ports P and T can be size G 3/8, G 1/2 or SAE 8 (3/4" 16 UNF). Test point M is G 1/4 on BSPP versions, and SAE 4 in SAE versions.

Technical data

General		
TE-11-02-00-	kg (lbs)	0.54 (1.19)
TE-11-03-00-	kg (lbs)	0.54 (1.19)
TE-11-56-00-	kg (lbs)	0.54 (1.19)
TE-11-02-S_-	kg (lbs)	0.80 (1.76)
TE-11-03-S_-	kg (lbs)	0.80 (1.76)
TE-11-56-S_-	kg (lbs)	0.80 (1.76)
Ambient Temperature	°C (°F)	-20....+50 (-4....+122) (NBR seals)
Hydraulic		
Maximum pressure	bar (psi)	250 (3625)
Maximum inlet flow	l/min (gpm)	50 (13.2)
Hydraulic fluid General properties: it must have physical lubricating and chemical properties suitable for use in hydraulic systems such as, for example:	Mineral oil based hydraulic fluids HL (DIN 51524 part 1). Mineral oil based hydraulic fluids HLP (DIN 51524 part 2). For use of environmentally acceptable fluids (vegetable or polyglycol base) please consult us.	
Fluid Temperature	°C (°F)	-20....+80 (-4....+176) (NBR)
Permissible degree of fluid contamination	ISO 4572: $\beta_{x \geq 75} X = 10 \dots 12$ ISO 4406: class 19/17/14 NAS 1638: class 8	
Viscosity range	mm²/s	5....420

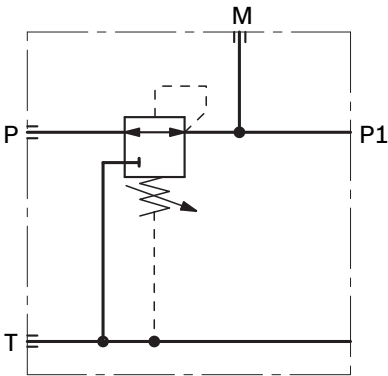
Note

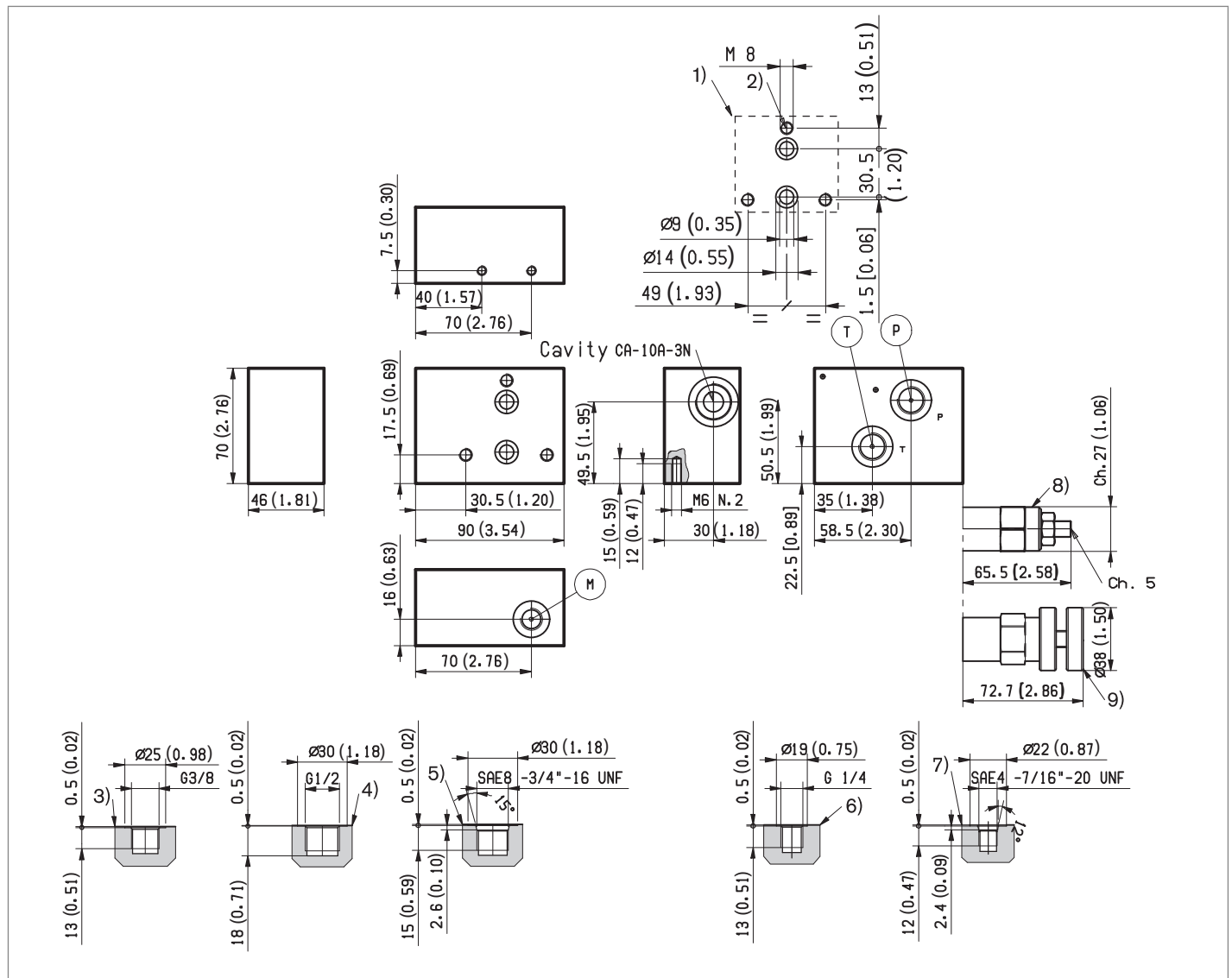
For applications with different specifications consult us

Ordering details

01	02	03	04	05	06
TE	-	11	-	-	AL
Family					
01	Inlet Elements				TE
Configuration					
02	with pressure reducing valve on the P line				11
Ports					
03	G 3/8 DIN 3852				02
	G 1/2 DIN 3852				03
	3/4-16 UNF-2B (SAE8)				56
Pressure Reducing Valve range					
04	Pressure range 2-25 bar (30-350 psi)				1
	Pressure range 10-50 bar (145-758 psi)				2
	Pressure range 28-80 bar (400-1160 psi)				3
Type of pressure adjustment					
05	Screw type adjuster				S
	Hand-knob type adjuster				K
Material					
06	Aluminium				AL

Symbol



External dimensions and fittings

- 1 Flange specifications for coupling to the ED Directional Valve Elements (for Version TE-11-02...).
- 2 For tie rod and tightening torque information see data sheet RE 18301-90.
- 3 Hydraulic Ports P-T G 3/8, for Inlet Elements TE-11-02...
- 4 Hydraulic Ports P-T G 1/2, for versions TE-11-03...
- 5 Hydraulic Ports P-T SAE 8, for versions TE-11-56.
- 6 Test Point port (M) G 1/4, for Inlet Elements TE-11-02... and TE-11-03...
- 7 Test Point port SAE 4, for versions TE-11-56...
- 8 Pressure Reducing/Relieving Cartridge VRPR, with screw type adjuster.
- 9 Pressure Reducing/Relieving Cartridge VRPR, with hand-knob type adjuster.

Bosch Rexroth Oil Control S.p.A.

Oleodinamica LC Division
Via Artigianale Sedrio, 12
42030 Vezzano sul Crostolo
Reggio Emilia - Italy
Tel. +39 0522 601 801
Fax +39 0522 606 226 / 601 802
compact-hydraulics-cdv@boschrexroth.com
www.boschrexroth.com/compacthydraulics

© This document, as well as the data, specifications and other information set forth in it, are the exclusive property of Bosch Rexroth Oil Control S.p.a.. It may not be reproduced or given to third parties without its consent. The data specified above only serve to describe the product. No statements concerning a certain condition or suitability for a certain application can be derived from our information. The information given does not release the user from the obligation of own judgment and verification. It must be remembered that our products are subject to a natural process of wear and aging.
Subject to change.