

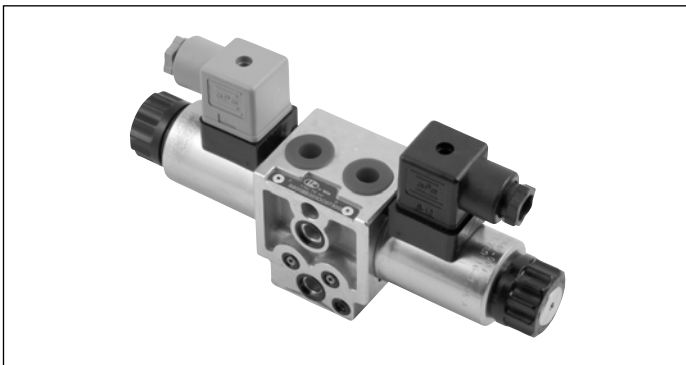
4/3 - 4/2 Directional valve elements with proportional control and with or without LS connections

B8_80... (EDB-P)

RE 18300-55

Edition: 08.2016

Replaces: 02.2016



Size 4

Series 00

Maximum operating pressure 310 bar (4500 psi)

Maximum flow 17 l/min (4.5 gpm)

Port connections G 3/8 SAE6 - M16x1.5

General specifications

Valve element with direct proportional control of spool.
Control spools operated by solenoids with removable coils.

In the de-energized condition, the control spool is held in the central position by return springs.

Wet pin proportional tubes for DC coils, with push rod for mechanical override; nickel plated surface.

Manual override (push-button or screw type) available as option.

Contents

Ordering details	2
Symbols	2
Functional description	3
Technical data	4
Characteristic curves	5
External dimensions and fittings	6
Electric connection	7
Electronic feed regulator	7

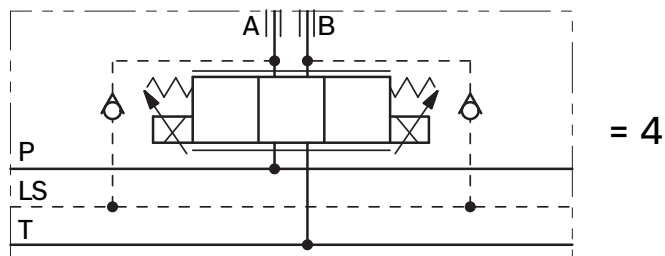
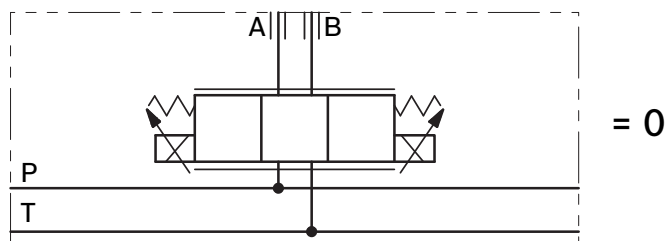
Ordering details

01	02	03	04	05	06	07	08	09	10	11
B	8		80		S					00
Family										
01	Directional Valve elements EDB									B
Type										
02	Size 4 proportional									8
Configuration										
03	Standard									0
	With Load Sensing control									4
Coil type										
04	P45									80
Spool variants										
05	4/3 operated both sides a and b; P – T closed in neutral									B2
	4/2 operated on side a only; P – T closed in neutral									B3
	4/2 operated on side b only; P – T closed in neutral									B4
	4/3 operated on both sides a and b; A and B to T in neutral									E2
	4/2 operated on side a only; A and B to T in neutral									E3
	4/2 operated on side b only; A and B to T in neutral									E4
Flow pattern										
06	Symmetrical									S
Nominal flow ¹⁾										
07	4 l/min (1.06gpm)									3
	9 l/min (2.38gpm)									4
	17 l/min (4.50gpm)									5
Voltage supply										
08	Without coil									00
	12V DC									0B
	24V DC									0C
Electric connections										
09	Without coils									00
	With coils, without mating connector DIN EN 175301-803									01 ²⁾
	With coils, without mating connector vertical Amp-Junior									03
Ports										
10	G 3/8 DIN 3852									3
	M 16x1,5 DIN 3852									U
	9/16-18 UNF 2-B (SAE6)									B
Options										
11	No options									No code
	Standard									0
	Screw type manual override									F

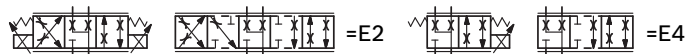
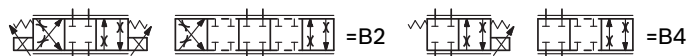
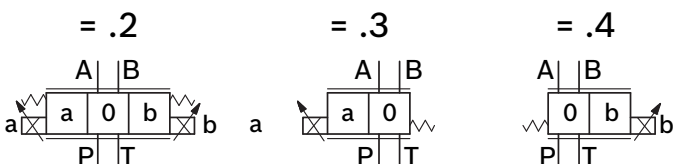
● = Available - = Not available

- 1) With Δp ($P > T$) 10 bar (145 psi), corresponding approx.
to Δp $P > A, B$ 5 bar (73 psi).
2) For connectors ordering code see data sheet RE 18325-90.

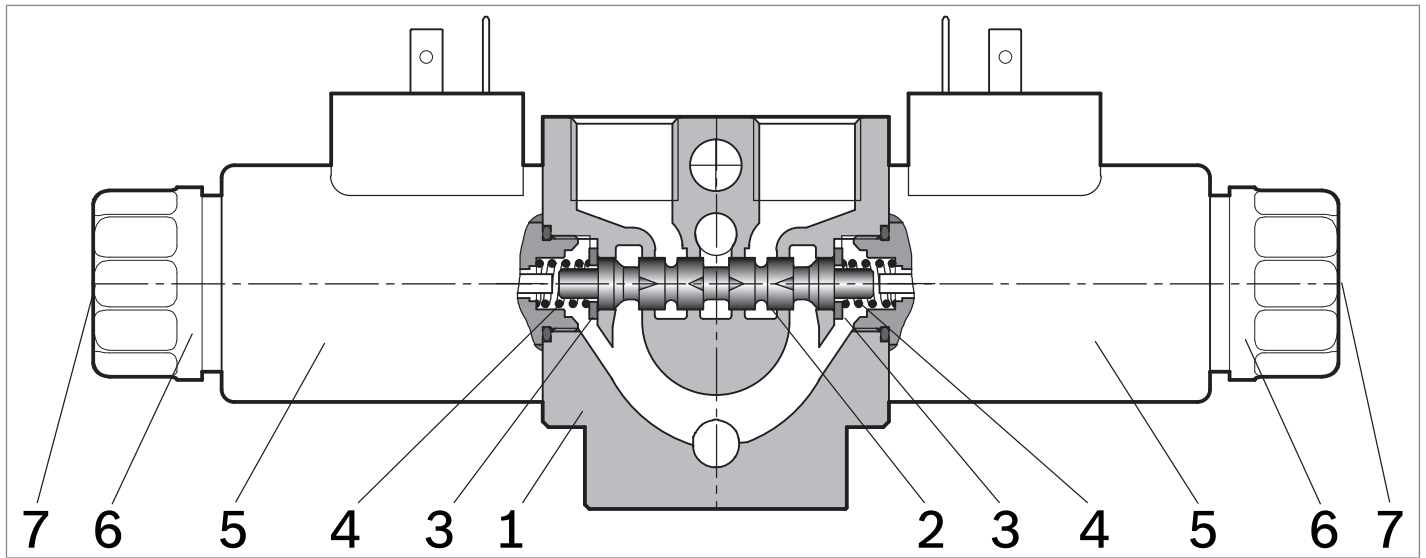
Symbols



Spool variants



Functional description



The sandwich plate design directional valve elements B8080... are compact direct operated proportional solenoid valves which control the start, the stop, the direction and the quantity of the oil flow. These elements basically consist of a stackable housing (1) with a control spool (2), one or two solenoids (5), and one or two return springs (4).

Energized by an electronic feed regulator, each solenoid (5) displaces the control spool (2) from its neutral-central position "0" proportionally to the current received, in open

loop mode; a regulated oil flow P to A , or P to B, is achieved. Once the solenoid is de-energized, the return spring (4) pushes the spool thrust washer (3) back against the housing and the spool (2) returns in its neutral-central position "0".

Each coil is fastened to the solenoid tube (5) by a ring nut (6). A pin (7) allows to push the spool (2) in emergency conditions, when the solenoid cannot be energized, like in case of voltage shortage.

Technical data

General				
Valve element with 2 solenoids		kg (lbs)	1.5 (3.3)	
Valve element with 1 solenoid		kg (lbs)	1.1 (2.5)	
Ambient Temperature		°C (°F)	−20....+50 (-4....+122) (NBR seals)	
Hydraulic				
Maximum pressure at P, A and B ports		bar (psi)	310 (4500)	
Maximum pressure at T		bar (psi)	180 (2610)	
Maximum inlet flow		l/min (gpm)	24 (6.3)	
E-schemes p closed in the neutral position (connection from A to T and B to T)			Approx. 2.3% of the nominal cross-section	
Hydraulic fluid General properties: it must have physical lubricating and chemical properties suitable for use in hydraulic systems such as, for example:			Mineral oil based hydraulic fluids HL (DIN 51524 part 1). Mineral oil based hydraulic fluids HLP (DIN 51524 part 2). For use of environmentally acceptable fluids (vegetable or polyglycol base) please consult us.	
Fluid Temperature		°C (°F)	−20....+80 (-4....+176) (NBR seals)	
Permissible degree of fluid contamination			ISO 4572: $\beta_x \geq 75$ X=10...12 ISO 4406: class 19/17/14 NAS 1638: class 8	
Viscosity range		mm²/s	20....380 (optimal 30....46)	
Electrical				
Voltage type		PWM	120 Hz	
Voltage tolerance (nominal voltage)		%	-10 +10	
Duty			Continuous, with ambient temperature ≤ 50°C (122°F)	
Coil wire temperature not to be exceeded		°C (°F)	180 (356)	
Insulation class			H	
Compliance with			Low Voltage Directive LVD 73/23/EC (2006/95/EC), 2004/108/EC	
Coil weight		kg (lbs)	0.228 (0.503)	
Voltage		V	12	24
Nominal 100% current		A	1.76	0.94
Coil resistance (nominal at 20°C (68°F))	- Cold value	Ω	3.71	13
	- Max. hot value	Ω	6.1	22.9
Electronic control				
Electronic feed regulators ³⁾			Upon request	

1) An electronic, open loop type, regulator with plug-in pins EN 175301-803 is available and can be fitted onto the solenoid directly.
For valve elements with two solenoids, two electronic regulators are needed.

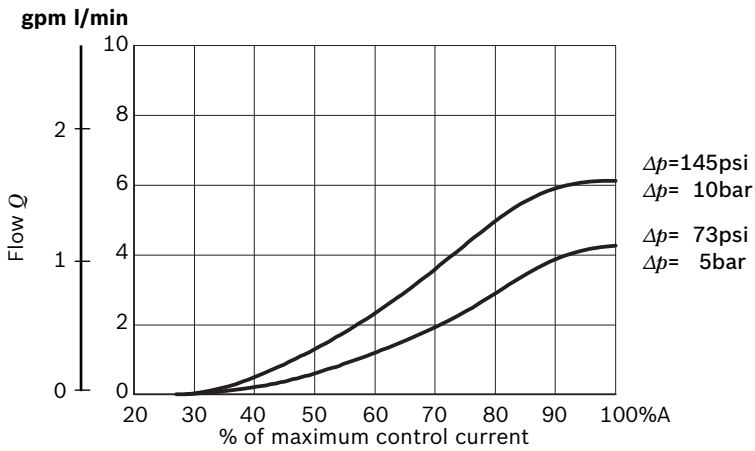
Note

For applications with different specifications consult us

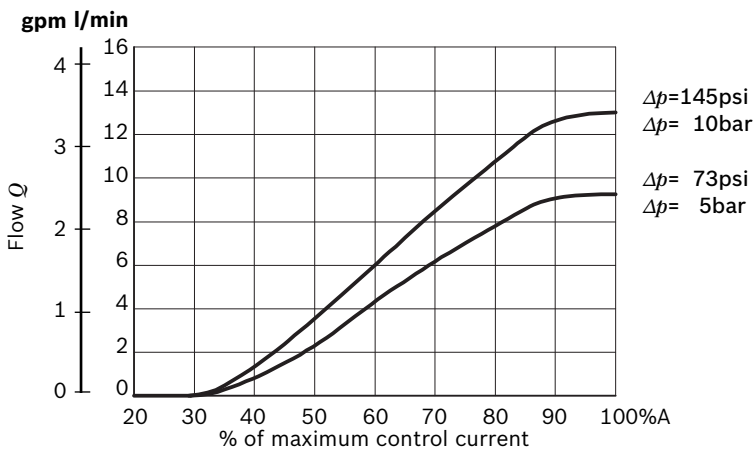
Code	Voltage [V]	Connector type	Coil description	Marking	Coil Mat no.
=OB 01	12 DC	EN 175301-803 (Ex. DIN 43650)	P45 01	12 DC	R933000088
=OB 03	12 DC	AMP JUNIOR	P45 03	12 DC	R933000089
=OC 01	24 DC	EN 175301-803 (Ex. DIN 43650)	P45 01	24 DC	R933000090
=OC 03	24 DC	AMP JUNIOR	P45 03	24 DC	R933000091

Characteristic curves

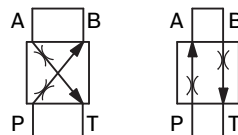
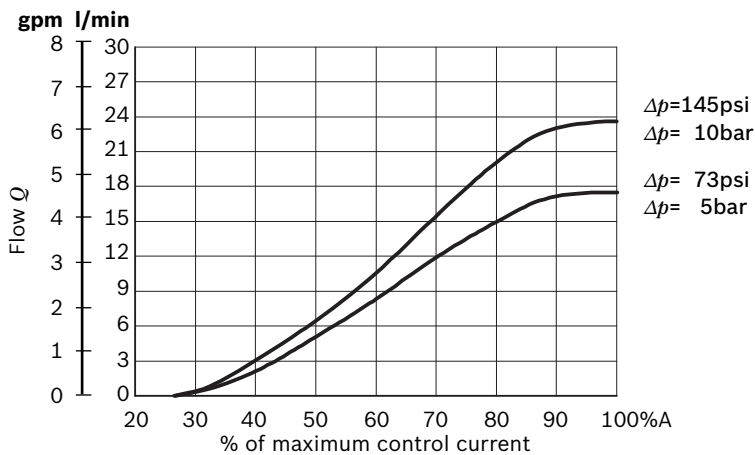
Ordering code S3: 4 l/min (1.06 gpm) with Δp 5 bar (73 psi) P>A,B.



Ordering code S4: 9 l/min (2.38 gpm) with Δp 5 bar (73 psi) P>A,B.

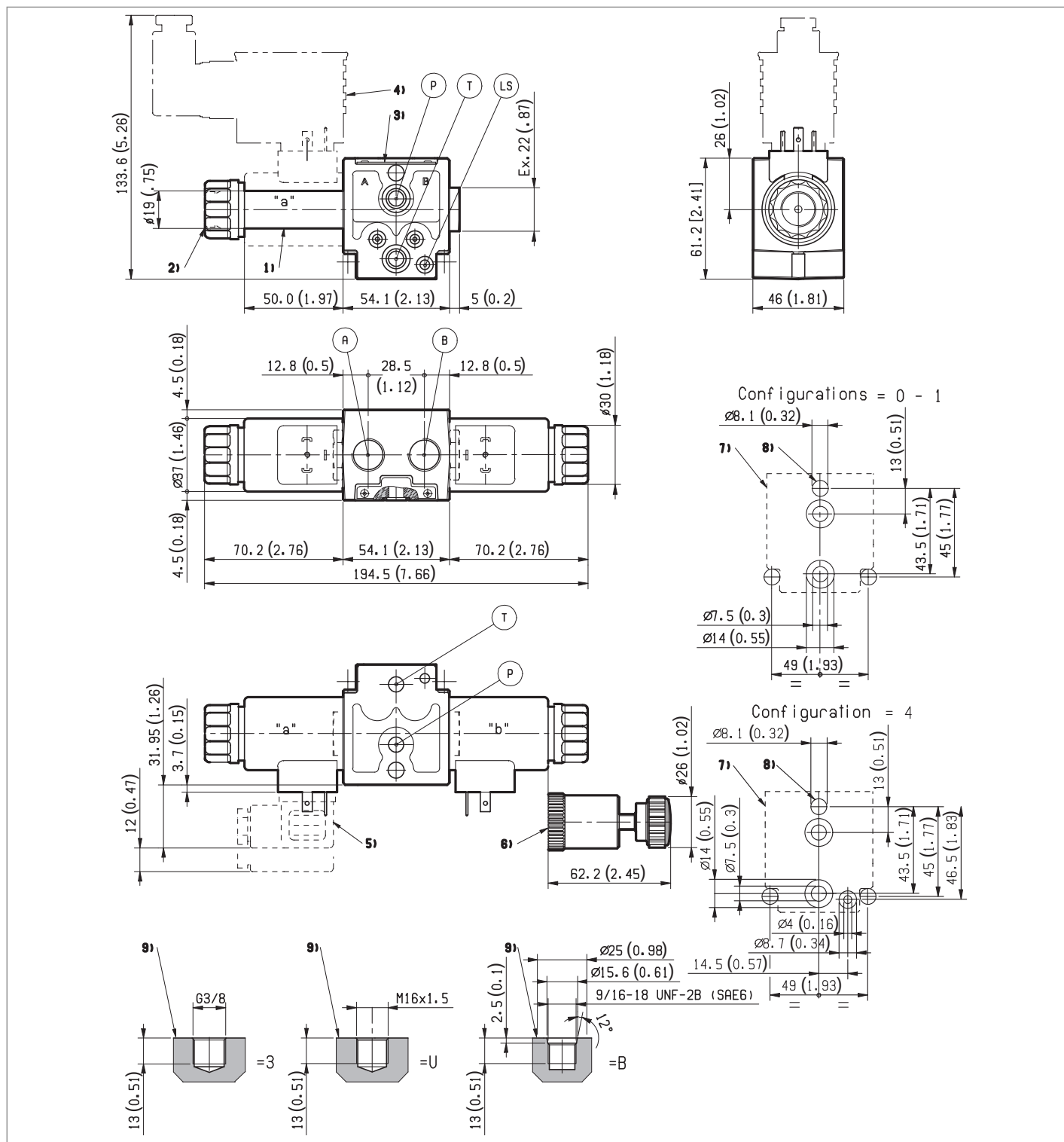


Ordering code S5: 17 l/min (4.50 gpm) with Δp 5 bar (73 psi) P>A,B.



Δp = valve pressure differential (inlet pressure P_p minus load P_l and minus return pressure P_t).

External dimensions and fittings



- 1 Solenoid tube \varnothing 19 mm (0.75 inch).
- 2 Ring nut for coil locking \varnothing 30 mm (1.18 in); torque 6–7 Nm (4.4 – 5.2 ft-lb).
- 3 Identification label.
- 4 Dimension with electronic feed regulator.
- 5 Clearance needed for connector removal.
- 6 Optional screw type manual override, EF type, for spool opening:

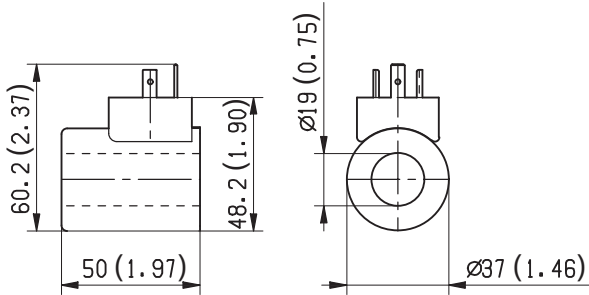
it is screwed (torque 6-7 (4.4-5.2 ft-lb)) to the tube as replacement of the coil ring nut.

Mat no. R933003848.

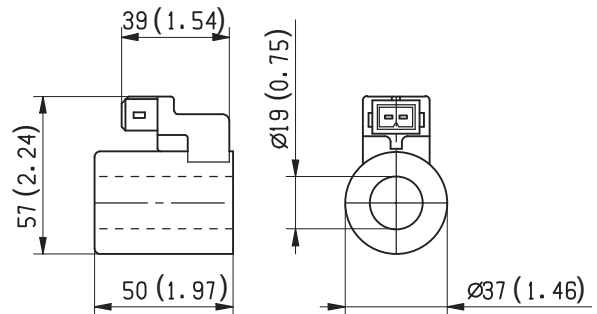
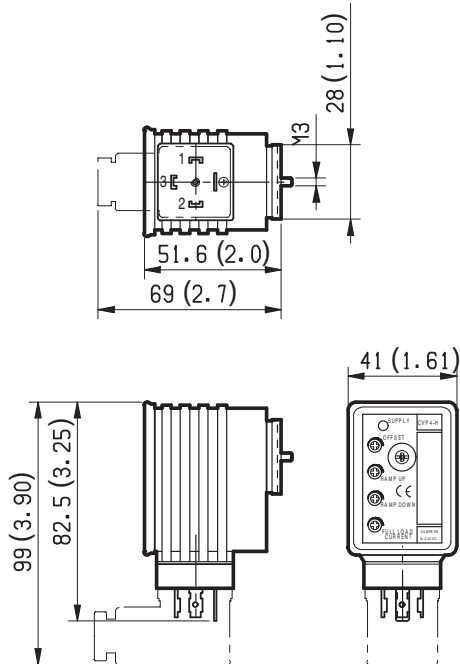
- 7 Flange specifications for coupling to ED intermediate elements.
- 8 For tie rod and tightening torque information see data sheet RE 18301-90.
- 9 A and B ports.

Electric connection

- 01** Protection class: IP 65 when connector with seal is properly screwed down.



- 03** Protection class: IP 65 with female connector properly fitted (see drawing).

**Electronic feed regulator**

Supply: yellow LED, lit up with power ON.

Off Set: minimum current adjustment. Adjust solenoid current so that the desired minimum value is obtained. Clockwise rotation increases current.

Ramp up: Ramping up time adjustment.

Ramp down: Ramping down time adjustment.

For longer ramping times, turn potentiometers clockwise; for shorter ramping times, turn the potentiometers counter-clockwise.

Full load current: Maximum current adjustment. Adjust solenoid current so that the desired maximum value is obtained (up to 2A). Clockwise rotation increases current.

Frequency adjustment: it is possible to set the PWM frequency obtaining the desired control sensitivity. After removing the external plastic cover, turn the adjusting screw; clockwise rotation increases frequency from 100 to 500 Hz.

Electronic feed regulator

Regulator ordering code	R933003290
Supply voltage	12-30 VDC
Control Signal	0-10 VDC
Max. output current	2 A
Minimum output current	0....0.6 A
Ramp adjustment up/down	0.1....10 s
PWM Frequency adjustment (pre-set 120 Hz)	100....500 Hz
Ambient operating temperature	-10....+60 °C (14....+140 °F)
Weight	0.12 kg (26.4 lbs)
Electromagnetic compatibility	EN50081-1/2EN61000-4-2/3/4/5/6
Potentiometer resistance	5....10 k Ω

Bosch Rexroth Oil Control S.p.A.

Oleodinamica LC Division
Via Artigianale Sedrio, 12
42030 Vezzano sul Crostolo
Reggio Emilia - Italy
Tel. +39 0522 601 801
Fax +39 0522 606 226 / 601 802
compact-hydraulics-cdv@boschrexroth.com
www.boschrexroth.com/compacthydraulics

© This document, as well as the data, specifications and other information set forth in it, are the exclusive property of Bosch Rexroth Oil Control S.p.a.. It may not be reproduced or given to third parties without its consent. The data specified above only serve to describe the product. No statements concerning a certain condition or suitability for a certain application can be derived from our information. The information given does not release the user from the obligation of own judgment and verification. It must be remembered that our products are subject to a natural process of wear and aging.
Subject to change.