

Intermediate elements with flow regulator on P line

TI-04-__-

RE 18301-27

Edition: 02.2016

Replaces: 06.2015



Description

The intermediate elements TI-04-__- are designed to be fitted between two directional valve elements. Different hydraulic layout can be choice with different ordering codes.

Material: the body is made of black anodized Aluminium (AL), or of yellow Zinc plated (Cr+3) Cast Iron (CI).

Technical data

General			
Weight TI-04-00-AL	kg (lbs)	0.74	(1.63)
Weight TI-04-01-AL	kg (lbs)	0.84	(1.85)
Weight TI-04-02-AL-...-	kg (lbs)	1.08	(2.38)
Weight TI-04-00-CI	kg (lbs)	1.10	(2.42)
Weight TI-04-03-CI	kg (lbs)	1.33	(2.93)
Ambient Temperature	°C (°F)	-20....+50 (-4....+122) (NBR seals)	

Hydraulic		
Maximum inlet flow	l/min (gpm)	50 (13.2)
Maximum pressure Ti-Aluminium	bar (psi)	250 (3625)
Maximum pressure Ti-Cast Iron	bar (psi)	310 (4495)
Hydraulic fluid General properties: it must have physical lubricating and chemical properties suitable for use in hydraulic systems such as, for example:		Mineral oil based hydraulic fluids HL (DIN 51524 part 1). Mineral oil based hydraulic fluids HLP (DIN 51524 part 2). For use of environmentally acceptable fluids (vegetable or polyglycol base) please consult us.
Fluid Temperature	°C (°F)	-20....+80 (-4....+176) (NBR)
Permissible degree of fluid contamination		ISO 4572: $\beta_x \geq 75$ X=10...12 ISO 4406: class 19/17/14 NAS 1638: class 8
Viscosity range	mm²/s	5....420

Note

For applications with different specifications consult us

Ordering details

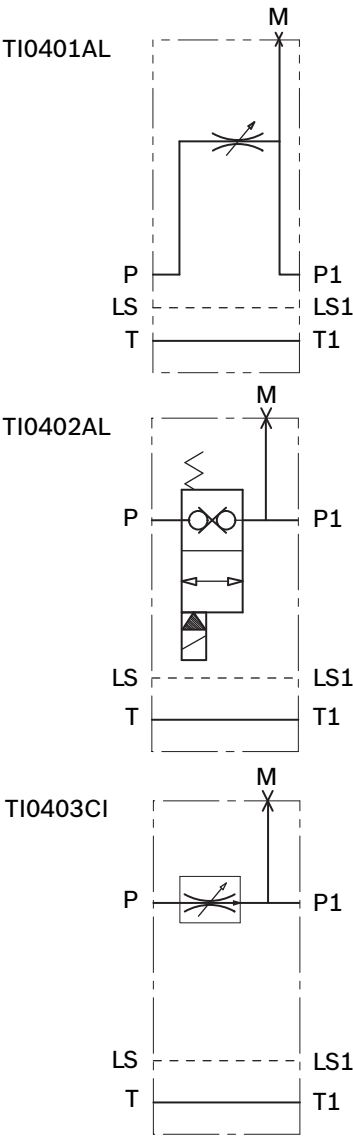
TI0401AL (with mechanical cartridge valve, not pressure compensated)						
01		02			03	
TI	-	04	-		-	AL
Family						
01	Intermediate Elements					TI
Configuration						
02	without cartridge valve					00
	with mechanical cartridge valve, not pressure compensated 0-40l/min (0-10.57gpm)					01
Material and Cavity						
03	Alluminium CA08A2N					AL

TI0402AL (with on off electrical cartridge valve, normally closed)									
01	02			03		04		05	
TI	-	04	-		-	AL	-		-
Family									
01	Intermediate Elements								TI
Configuration									
02	without cartridge valve								00
	with electrical cartridge valve, normally closed 0-40l/min (0-10.57gpm)								02
Material and Cavity									
03	Alluminium CA08A2N								AL
Cartridge voltage supply									
04	No cartdrige (omit)								--
	12V DC								OB
	24V DC								OC

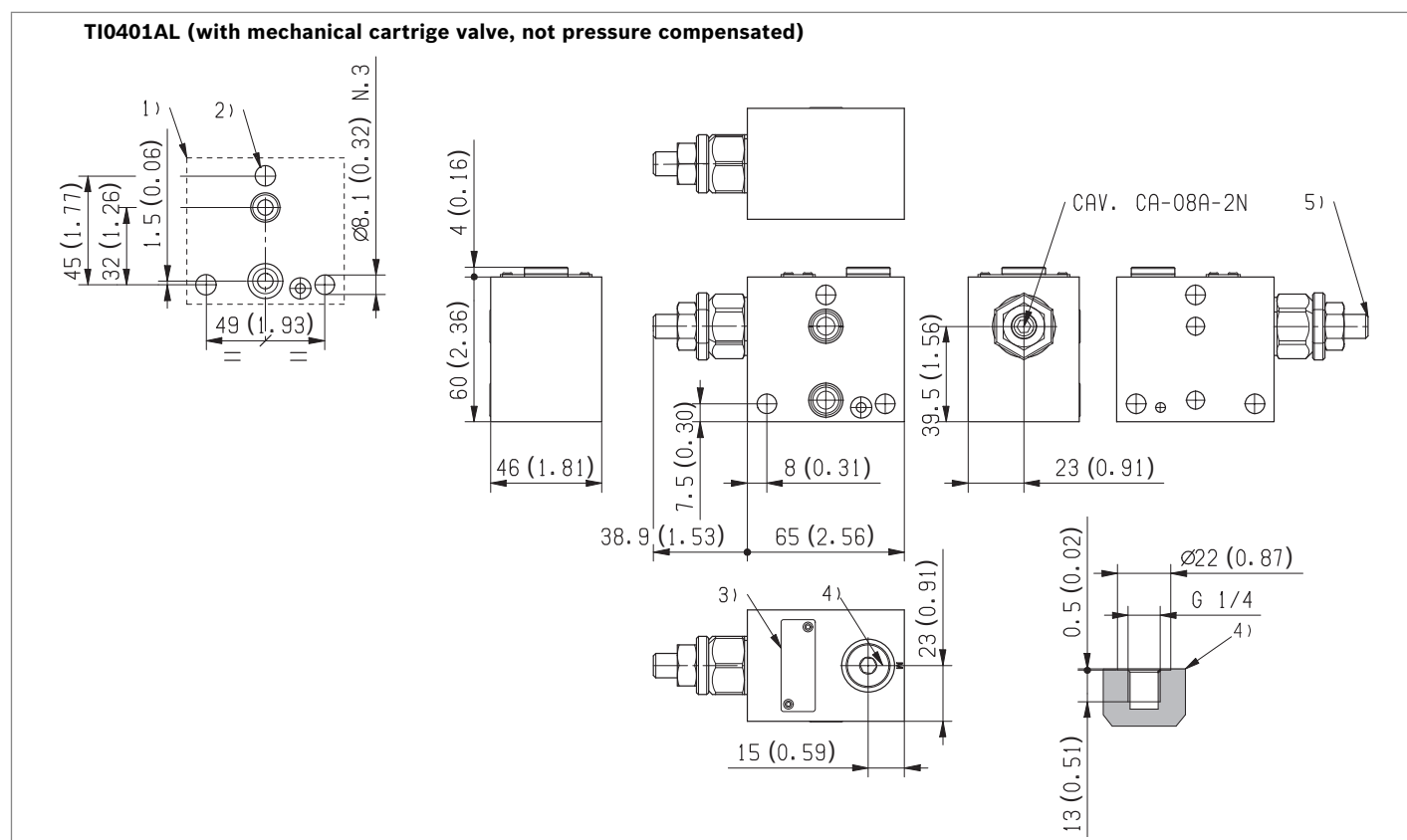
Electric connections						
05	No cartridge (omit)					--
	With coils, without mating connector DIN EN 175301-803					01
	With coils, with bi-directional diode, without mating connector vertical Amp-Junior					03
	With coils, without mating mating connector DT04-2P					07

TI0403CI (with mechanical cartridge valve, pressure compensater)						
01	02				03	
TI	-	04	-		-	CI
Family						
01	Intermediate Elements					TI
Configuration						
02	without cartridge valve					00
	with mechanical cartridge valve, pressure compensated 0.2-30l/min (0.05-7.92gpm)					03
Material and Cavity						
03	Cast Iron CA08A2N					CI

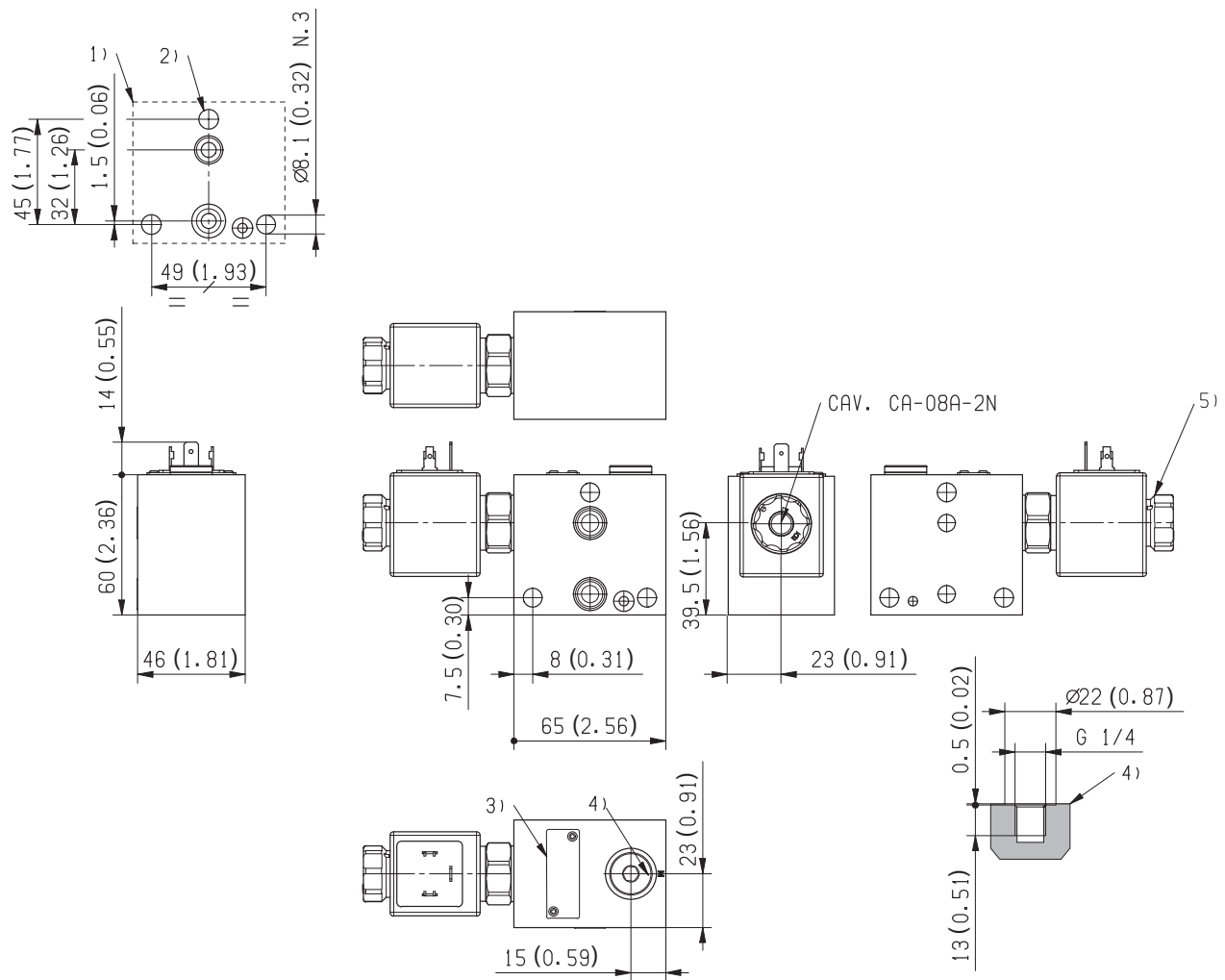
Symbols



External dimensions and fittings

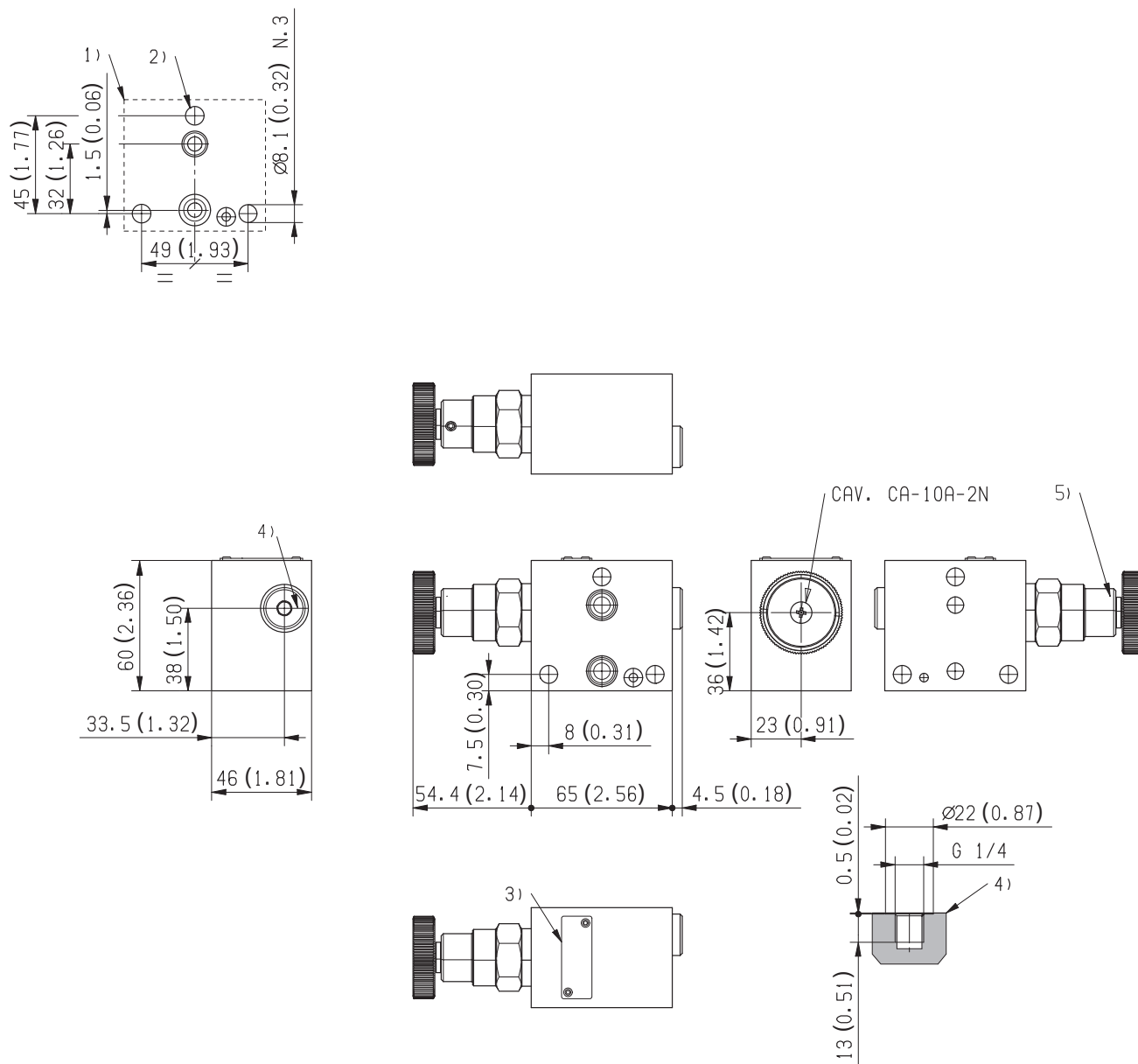


- | | |
|--|---|
| 1 Flange specifications for coupling to ED intermediate elements. | 3 Identification label. |
| 2 For tie rod and tightening torque information see data sheet RE 18301-90. | 4 Test point M(G 1/4) for pressure gauge connection. |
| | 5 Flow regulator cartridge ST-C-06. |

TI0402AL (with on off electrical cartridge valve, normally closed)


- 1** Flange specifications for coupling to ED intermediate elements.
2 For tie rod and tightening torque information see data sheet RE 18301-90.

- 3** Identification label.
4 Test point M(G 1/4) for pressure gauge connection.
5 Electrical valve 40 l/min (10,57 gpm).

TI0403CI (with mechanical cartridge valve, pressure compensater)

- 1** Flange specifications for coupling to ED intermediate elements.
2 For tie rod and tightening torque information see data sheet RE 18301-90.

- 3** Identification label.
4 Test point M(G 1/4) for pressure gauge connection.
5 Regulated flow range 0.2÷30 l/min (0.05÷7.92 gpm).

Bosch Rexroth Oil Control S.p.A.

Oleodinamica LC Division
Via Artigianale Sedrio, 12
42030 Vezzano sul Crostolo
Reggio Emilia - Italy
Tel. +39 0522 601 801
Fax +39 0522 606 226 / 601 802
compact-hydraulics-cdv@boschrexroth.com
www.boschrexroth.com/compacthydraulics

© This document, as well as the data, specifications and other information set forth in it, are the exclusive property of Bosch Rexroth Oil Control S.p.a.. It may not be reproduced or given to third parties without its consent. The data specified above only serve to describe the product. No statements concerning a certain condition or suitability for a certain application can be derived from our information. The information given does not release the user from the obligation of own judgment and verification. It must be remembered that our products are subject to a natural process of wear and aging.
Subject to change.