

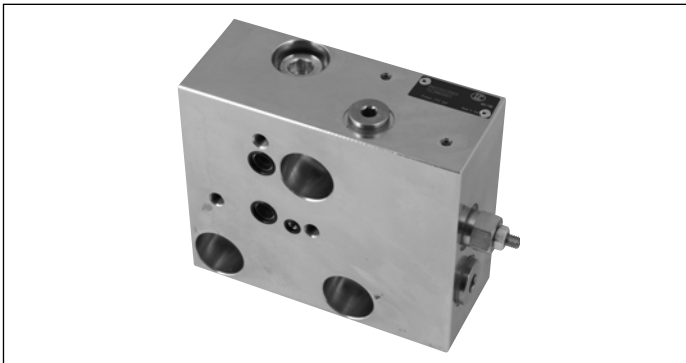
## Intermediate Elements for interfacing ED with M4-12

TI-M412-\_\_-\_\_

**RE 18301-29**

Edition: 09.2022

Replaces: 10.2009



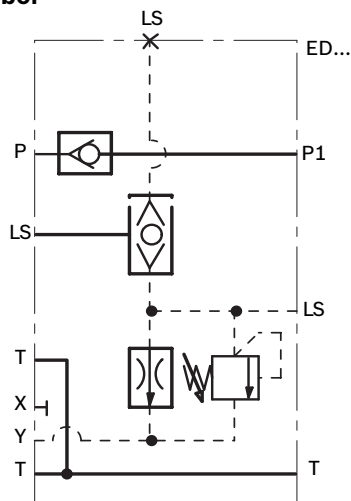
### Description

The adaptor elements TI-M412 \_\_ are employed to connect an ED directional valve assembly to a main control valve Rexroth M4-12.

These elements basically consist of body made of Yellow Zinc plated (Cr+3) steel which incorporates the following items:

- ▶ a check valve on the P – P1 line.
- ▶ a shuttle valve on the LS lines.
- ▶ a relief valve on the un the LS line which controls the maximum pressure output from the pump.
- ▶ a pressure compensated orifice which drains to tank the LS pressure by unloading a small regulated flow.

### Hydraulic Symbol



### Technical data

General		
Weight	kg (lbs)	6 (13.2)
Ambient Temperature	°C (°F)	-20....+50 (-4....+122)
Hydraulic		
Maximum pressure	bar (psi)	310 (4500)
Max. flow at P1		The max. rated flow depends from the directional control element.
Hydraulic fluid		Mineral oil based hydraulic fluids HL (DIN 51524 part 1). Mineral oil based hydraulic fluids HLP (DIN 51524 part 2). For use of environmentally acceptable fluids (vegetable or polyglycol base) please consult us.
Fluid Temperature	°C (°F)	-20....+80 (-4....+176) (NBR)
Permissible degree of fluid contamination		ISO 4572: $\beta_{x \geq 75} X = 10 \dots 12$ ISO 4406: class 19/17/14 NAS 1638: class 8
Viscosity range	mm <sup>2</sup> /s	5....420

### Note

For applications with different specifications consult us

## Ordering details

01	02	03	04	05
<b>TI</b>	-	<b>M412</b>	<b>00</b>	-

### Family

01	Intermediate Elements	<b>TI</b>
----	-----------------------	-----------

### Configuration

02	Adaptor plate for interfacing ED with Rexroth M4-12	<b>M4-12</b>
----	---	--------------

### LS port (external)

03	G 1/4	<b>00</b>
----	-------	-----------

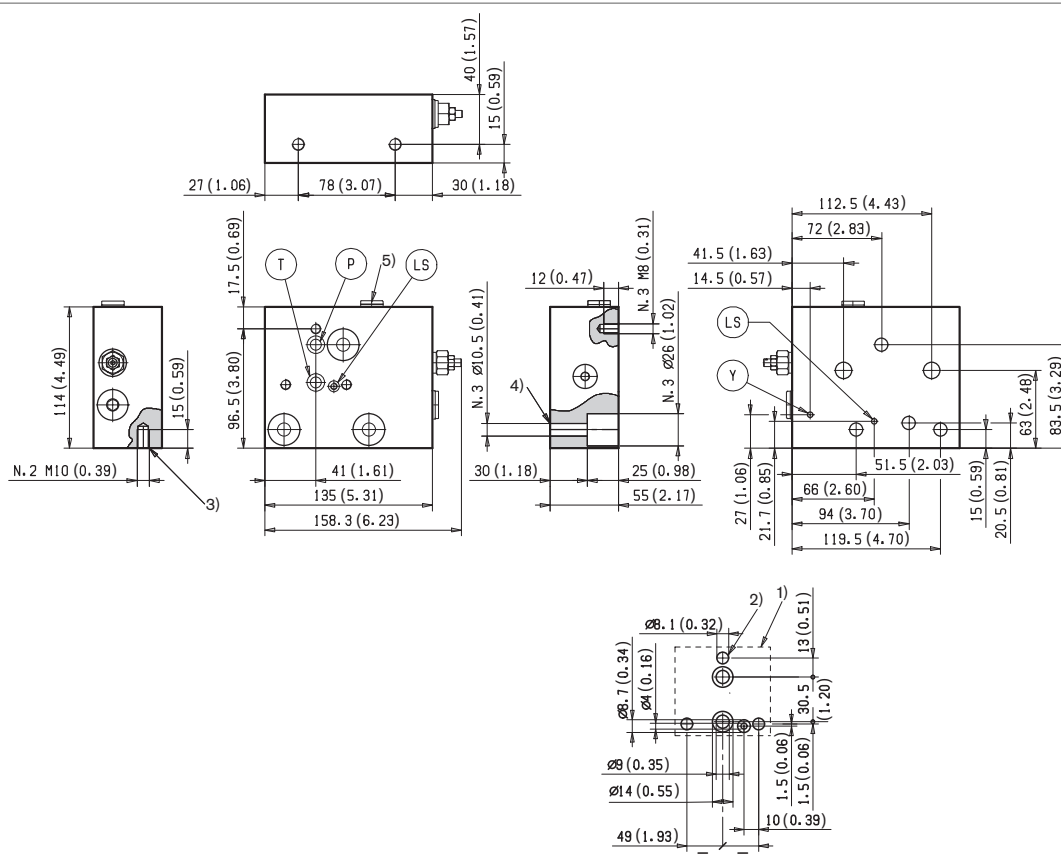
### P1 pressure range

04	50-210bar (725-3045 psi)	<b>01</b>
	100-310bar (1450-4500 psi)	<b>02</b>
	25-50bar (362-725 psi)	<b>03</b>

### Material

05	Zinc plated steel	<b>ST</b>
----	-------------------	-----------

## External dimensions and fittings



- 1 Flange specifications for coupling to ED directional valve elements.
- 2 For tie rod and tightening torque information see data sheet RE 18301-90.
- 3 No. 2 threaded holes M10 for fixation.

- 4 No. 3 holes 10.5 mm dia. for assembling M4-12 directional valve elements.
- 5 LS port (locked by a G 1/4 plug).

### Bosch Rexroth Oil Control S.p.A.

Oleodinamica LC Division  
Via Artigianale Sedrio, 12  
42030 Vezzano sul Crostolo  
Reggio Emilia - Italy  
Tel. +39 0522 601 801  
Fax +39 0522 606 226 / 601 802  
compact-hydraulics-cdv@boschrexroth.com  
www.boschrexroth.com/compacthydraulics

© This document, as well as the data, specifications and other information set forth in it, are the exclusive property of Bosch Rexroth Oil Control S.p.A.. It may not be reproduced or given to third parties without its consent. The data specified above only serve to describe the product. No statements concerning a certain condition or suitability for a certain application can be derived from our information. The information given does not release the user from the obligation of own judgment and verification. It must be remembered that our products are subject to a natural process of wear and aging. Subject to change.