

## Outlet Elements with additional inlet port P1 and tank port T1

TC-03-\_\_-

**RE 18301-63**

Edition: 02.2016

Replaces: 07.2012



### Description

The outlet elements TC-03-\_\_ are employed to connect the P and T channels of the ED elements of the Directional Valve Assembly, and to provide additional inlet port P1 and tank port T1, both with size either G 3/8 or G 1/2.

The outlet elements TC-03-\_\_ are available in two versions:

- Body made of Black Anodized Aluminium (AL).
- Body made of Yellow Zinc plated (Cr+3) Cast Iron (CI).

### Technical data

General		
Weight	kg (lbs)	0.25 (0.56)
TC-03-02-...-AL element		
Weight	kg (lbs)	0.25 (0.56)
TC-03-03-...-AL element		
Weight	kg (lbs)	0.65 (1.43)
TC-03-02-...-CI element		
Weight	kg (lbs)	0.65 (1.43)
TC-03-03-...-CI element		
Ambient Temperature	°C (°F)	-20....+50 (-4....+122) (NBR seals)
Hydraulic		
Maximum flow in P and T	l/min (gpm)	50 (13.2)
Maximum pressure for aluminium version (AL)	bar (psi)	250 (3625)
Maximum pressure for Cast Iron version (CI)	bar (psi)	310 (4500)
Hydraulic fluid	Mineral oil based hydraulic fluids HL (DIN 51524 part 1). Mineral oil based hydraulic fluids HLP (DIN 51524 part 2). For use of environmentally acceptable fluids (vegetable or polyglycol base) please consult us.	
General properties: it must have physical lubricating and chemical properties suitable for use in hydraulic systems such as, for example:		
Fluid Temperature	°C (°F)	-20....+80 (-4....+176) (NBR)
Permissible degree of fluid contamination	ISO 4572: $\beta_{x \geq 75} X = 12 \dots 15$ ISO 4406: class 20/18/15 NAS 1638: class 9	
Viscosity range	mm <sup>2</sup> /s	5....420

### Note

For applications with different specifications consult us

Ordering details

01	02	03	04
TC	-	03	-

Family

01	Outlet Elements	TC
----	-----------------	----

Configuration

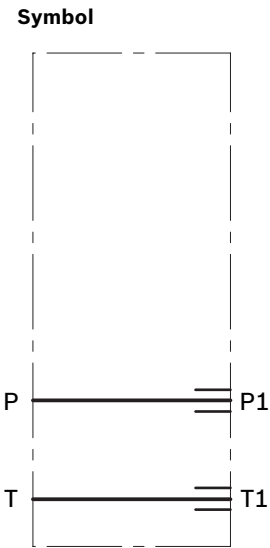
02	with additional inlet port P1 and tank port T1	03
----	--	----

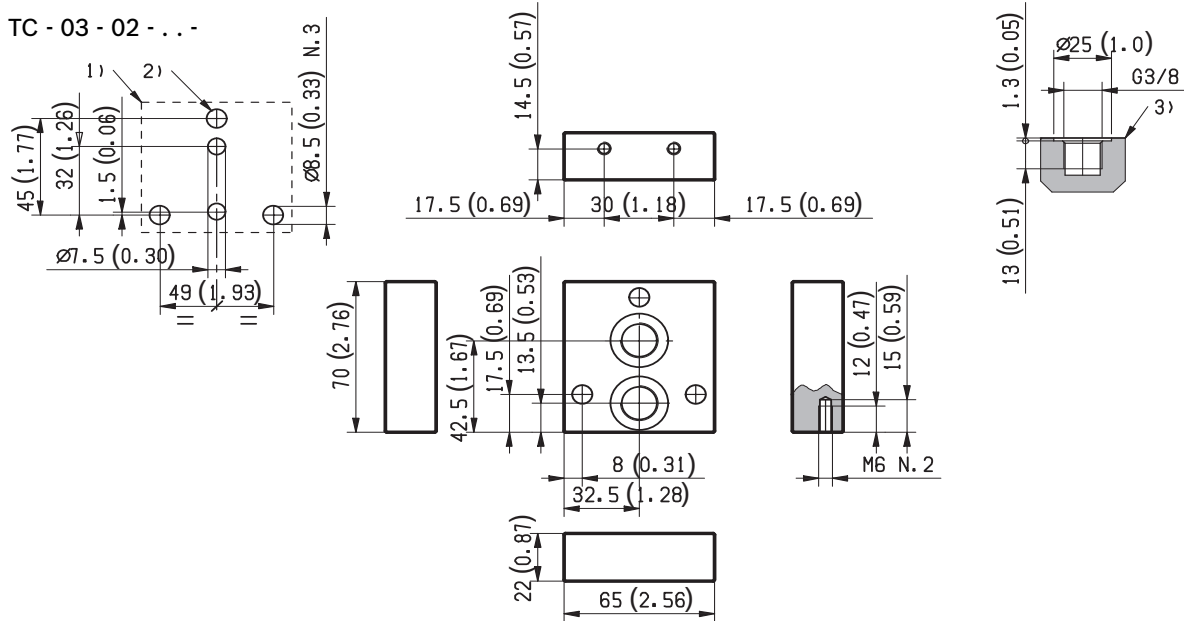
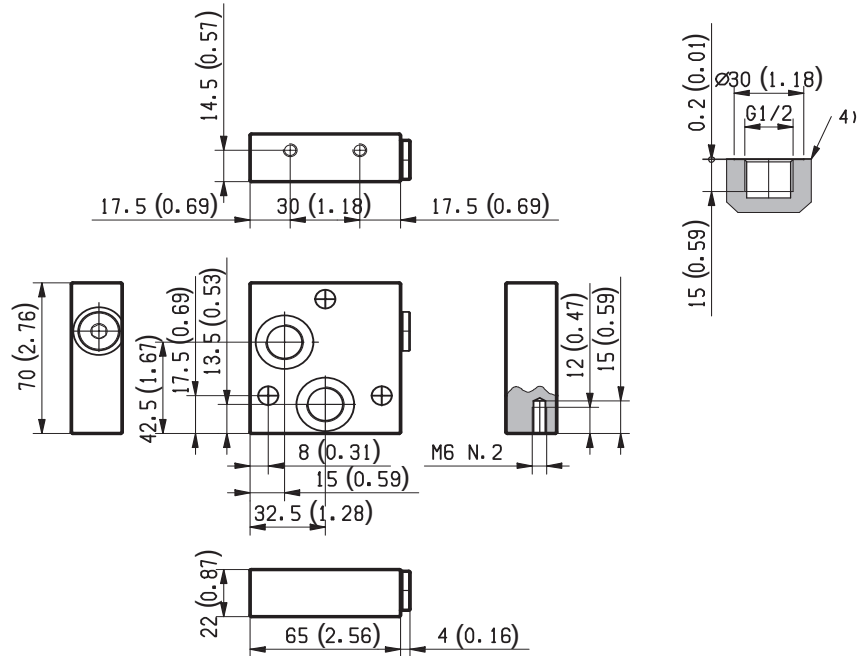
Ports

03	G 3/8 DIN 3852	02
	G 1/2 DIN 3852	03

Material

04	Aluminium	AL
	Cast Iron	CI



**External dimensions and fittings****TC - 03 - 02 - . . .****TC - 03 - 03 - . . .**

- 1** Flange specifications for coupling to the ED Directional Valve Elements.
- 2** For tie rod and tightening torque information see data sheet RE 18301-90.

- 3** Hydraulic Ports P1 and T1 size G 3/8, for TC-03-02-...
- 4** Hydraulic Ports P1 and T1 size G 1/2, for TC-03-03-...

**Bosch Rexroth Oil Control S.p.A.**

Oleodinamica LC Division  
Via Artigianale Sedrio, 12  
42030 Vezzano sul Crostolo  
Reggio Emilia - Italy  
Tel. +39 0522 601 801  
Fax +39 0522 606 226 / 601 802  
compact-hydraulics-cdv@boschrexroth.com  
[www.boschrexroth.com/compacthydraulics](http://www.boschrexroth.com/compacthydraulics)

© This document, as well as the data, specifications and other information set forth in it, are the exclusive property of Bosch Rexroth Oil Control S.p.a.. It may not be reproduced or given to third parties without its consent. The data specified above only serve to describe the product. No statements concerning a certain condition or suitability for a certain application can be derived from our information. The information given does not release the user from the obligation of own judgment and verification. It must be remembered that our products are subject to a natural process of wear and aging.  
Subject to change.