

Outlet Elements with Pressure Relief Valve and with P, T and M ports for downstream operators

TC-04-__-

RE 18301-64

Edition: 02.2016

Replaces: 07.2012



Description

The outlet elements TC-04-__ are employed to connect the P and T channels of the ED elements of the Directional Valve Assembly to the P1 and T1 ports for downstream operators. They incorporate a pressure relief cartridge which controls the maximum pressure in the P1 line. The relief setting can be checked through the Test Point port M. The TC-04-__ elements are available with body made of Black Anodized Aluminium (Al). Hydraulic Ports P1 and T1 are size G 3/8, and Test Point port (M) is G 1/4.

Technical data

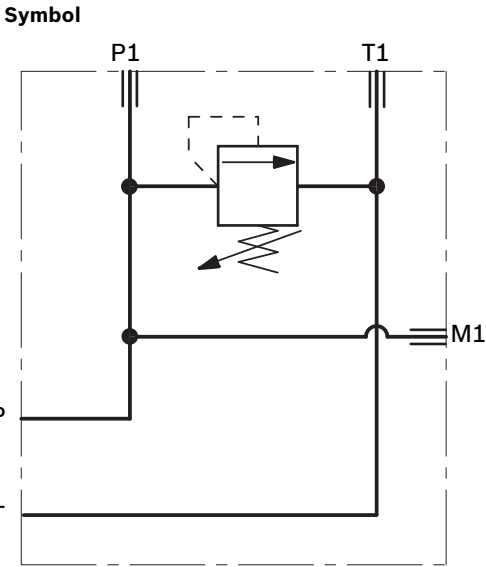
| General | | |
|---|--|--|
| Weight | kg (lbs) | 0.31 (0.67) |
| TC 04-02-00-AL element | | |
| Weight | kg (lbs) | 0.44 (0.96) |
| TC 04-02-S_-AL element | | |
| Ambient Temperature | °C (°F) | -20....+50 (-4....+122) (NBR seals) |
| Hydraulic | | |
| Maximum flow in P and T | l/min (gpm) | 35 (9.2) |
| Maximum pressure | bar (psi) | 250 (3625) |
| Hydraulic fluid | Mineral oil based hydraulic fluids HL (DIN 51524 part 1). | |
| General properties: it must have physical lubricating and chemical properties suitable for use in hydraulic systems such as, for example: | Mineral oil based hydraulic fluids HLP (DIN 51524 part 2). | |
| | For use of environmentally acceptable fluids (vegetable or polyglycol base) please consult us. | |
| | | |
| Fluid Temperature | °C (°F) | -20....+80 (-4....+176) (NBR) |
| Permissible degree of fluid contamination | ISO 4572: $\beta_{x \geq 75} X = 10 \dots 12$ ISO 4406: class 19/17/14 NAS 1638: class 8 | |
| Viscosity range | mm ² /s | 5....420 |

Note

For applications with different specifications consult us

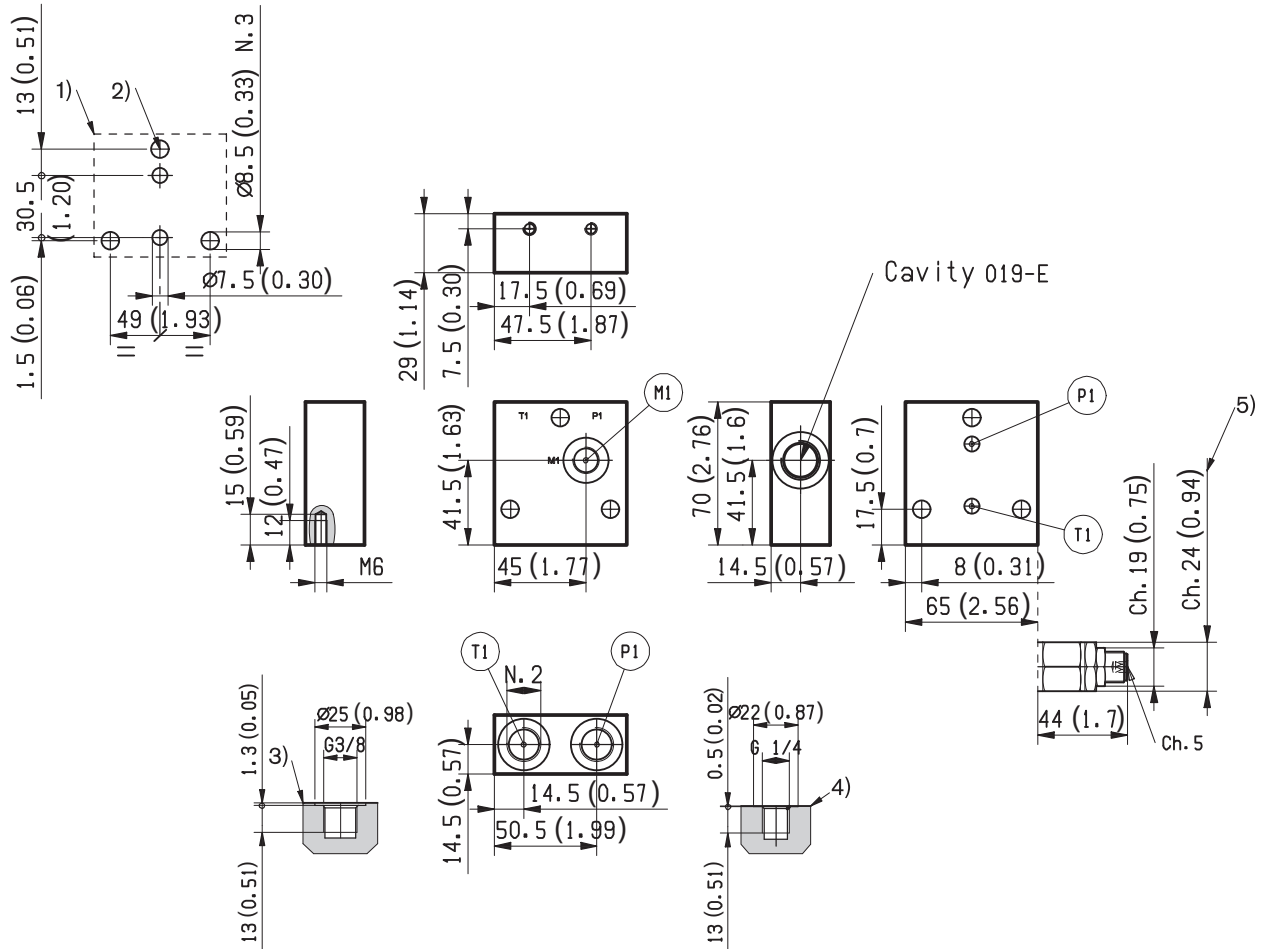
Ordering details

| | | | | |
|-----------------------|--|----|----|----|
| 01 | 02 | 03 | 04 | 05 |
| TC | - | 04 | - | 00 |
| | | | - | AL |
| Family | | | | |
| 01 | Outlet Elements | | | TC |
| Configuration | | | | |
| 02 | With Pressure Relief Valve and through ports P and T | | | 04 |
| Ports | | | | |
| 03 | G 3/8 DIN 3852 | | | 02 |
| Pressure Relief range | | | | |
| 04 | Without pressure relief valve | | | 00 |
| | 25-125bar (362-1813 psi) | | | SN |
| | 40-200bar (580-2900 psi) | | | SB |
| | 200-350bar (2900-5076 psi) | | | SV |
| Material | | | | |
| 05 | Aluminium | | | AL |



External dimensions and fittings

TC - 04 - 02 - . .



- 1 Flange specifications for coupling to the ED Directional Valve Elements.
- 2 For tie rod and tightening torque information see data sheet RE 18301-90.

- 3 Hydraulic Ports P1 and T1 size G 3/8 for downstream operators.
- 4 Test Point port (M) G 1/4...
- 5 Pressure Relief Cartridge VMD1025, with screw type adjuster (refer to RE 18301-91).

Bosch Rexroth Oil Control S.p.A.

Oleodinamica LC Division
Via Artigianale Sedrio, 12
42030 Vezzano sul Crostolo
Reggio Emilia - Italy
Tel. +39 0522 601 801
Fax +39 0522 606 226 / 601 802
compact-hydraulics-cdv@boschrexroth.com
www.boschrexroth.com/compacthydraulics

© This document, as well as the data, specifications and other information set forth in it, are the exclusive property of Bosch Rexroth Oil Control S.p.a.. It may not be reproduced or given to third parties without its consent. The data specified above only serve to describe the product. No statements concerning a certain condition or suitability for a certain application can be derived from our information. The information given does not release the user from the obligation of own judgment and verification. It must be remembered that our products are subject to a natural process of wear and aging.
Subject to change.