

Dual counterbalance, vented

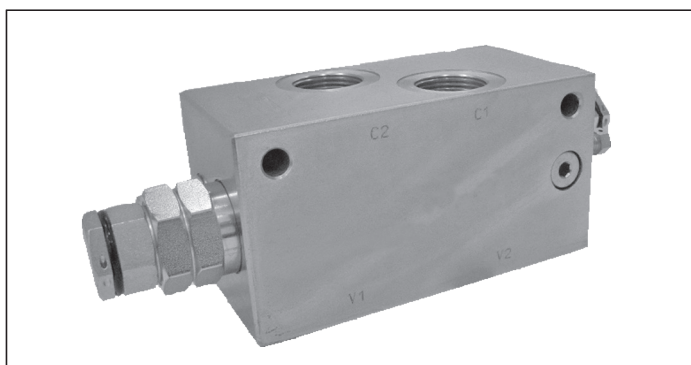
A-VBSO-DE-CCAP-33

08.44.94 - X - Y - Z

RE 18307-70

Edition: 03.2016

Replaces: 08.2010



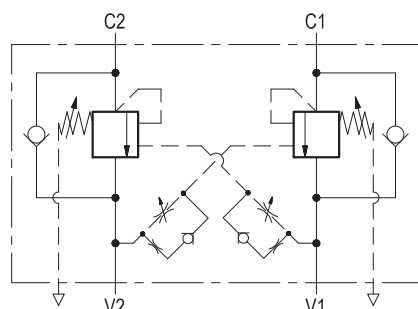
Description

It provides static and dynamic control of load by regulating the flow IN and OUT of the actuator, through ports C1 and C2. This valve module includes 2 sections, each one composed by a check and a relief valve pilot assisted by pressure in the opposite line: the check section allows free flow into the actuator, then holds the load against reverse movement; with pilot pressure applied at the line across, the pressure setting of the relief is reduced in proportion to the stated ratio until opening and allowing controlled reverse flow. The relief spring chambers are vented to air: relief and piloted opening are independent of back-pressure at V1 or V2.

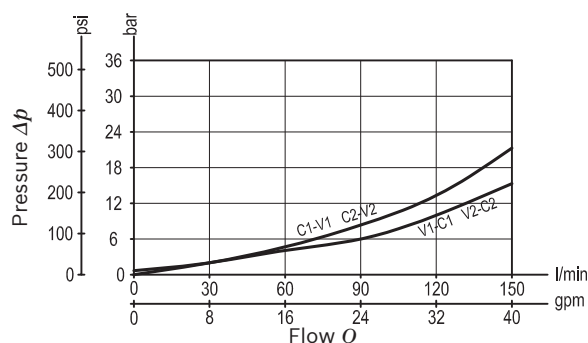
Technical data

| | |
|---|---|
| Max. operating pressure | 410 bar (5945 psi) |
| Max. flow | 150 l/min. (40 gpm) |
| Weight | 4.9 kg (10.8 lbs) |
| Manifold material | Zinc plated steel |
| Fluid | Mineral oil (HL, HLP) according DIN 51524 |
| Fluid temperature range | -30 °C to 100 (-22 to 212 °F) |
| Viscosity range | 5 to 800 mm ² /s (cSt) |
| Recommended degree of fluid contamination | Class 19/17/14 according to ISO 4406 |
| MTTFd | 150 years see 18350-51 |
| Other technical data | see data sheet 18350-50 |
| Relief setting: at least 1.3 times the highest expected load. | |

Note: for applications outside these parameters, please consult us.



Characteristic curve



Ordering code

| 08.44.94 | | | | X | Y | Z |
|-----------------------------|--|--|--|---|---|---|
| Dual counterbalance, vented | | | | | | |
| Pilot ratio | | | | | | |
| 03 4.1 | | | | | | |

| SPRINGS | | | |
|---------|-------------------------------|------------------------------------|------------------------------------|
| | Adj. pressure range bar (psi) | Pres. increase bar/turn (psi/turn) | Std. setting Q=5 (l/min) bar (psi) |
| 35 | 150-350 (2175-5000) | 110 (1595) | 350 (5000) |

Pressure setting up to 410 bar: code on request.

Tamper resistant cap code
ordering code 11.04.30.001
Mat. no. R930005194



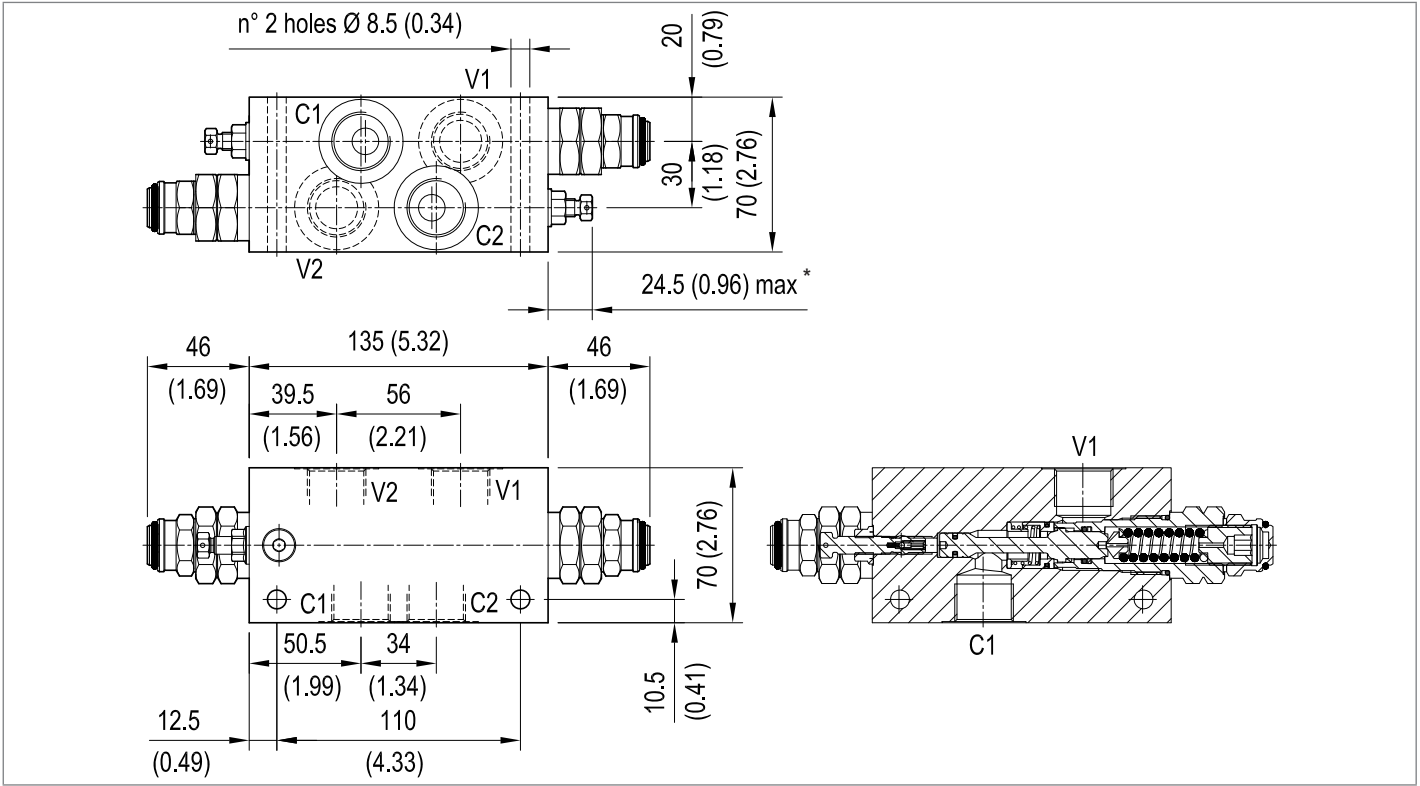
| Port sizes | V1 - V2 | C1 - C2 | |
|------------|---------|---------|--|
| 04 | G 3/4 | G 3/4 | |

Preferred types

| Type | Material number |
|-----------------|-----------------|
| 08449403043500B | R930008382 |

| Type | Material number |
|------|-----------------|
| | |
| | |

Dimensions



* The adjusting screw can be completely unscrewed. Do not exceed the indicated protrusion range of the adjusted screw.

Bosch Rexroth Oil Control S.p.A.
Via Leonardo da Vinci 5
P.O. Box no. 5
41015 Nonantola – Modena, Italy
Tel. +39 059 887 611
Fax +39 059 547 848
compact-hydraulics-pib@boschrexroth.com
www.boschrexroth.com/compacthydraulics

© This document, as well as the data, specifications and other information set forth in it, are the exclusive property of Bosch Rexroth Oil Control S.p.a.. It may not be reproduced or given to third parties without its consent. The data specified above only serve to describe the product. No statements concerning a certain condition or suitability for a certain application can be derived from our information. The information given does not release the user from the obligation of own judgment and verification. It must be remembered that our products are subject to a natural process of wear and aging. Subject to change.