

## Check and metering valve flangeable

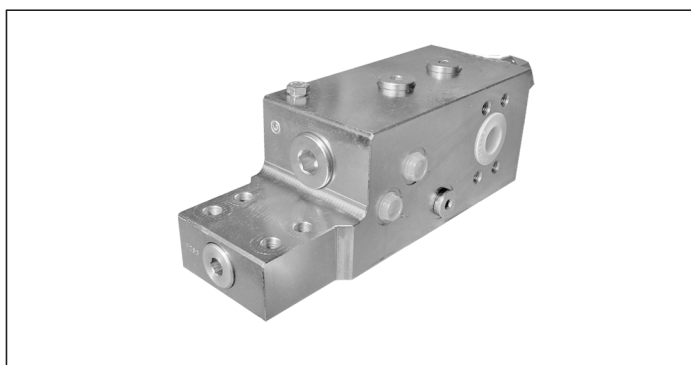
A-VBC-42-FC

08.47.85 - X - 72 - Z

**RE 18309-10**

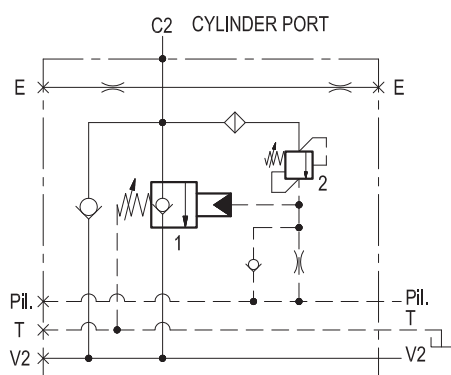
Edition: 02.2023

Replaces: 03.2016



### Description

Upstream flow (V2 - C2) to the cylinder is free through the 2 check valves, and reverse flow (C2 - V2) is locked/ metered by a leak free spool (1) which provides fine metering in the initial opening stroke. The spool, normally held closed by an adjustable spring force, is remotely controlled by joystick pilot pressure; the pilot pressure required to move the spool is load independent because the spring is vented to Tank. The valve includes a small relief cartridge (2) which senses C2 pressure and opens under overload or shock conditions in order to pilot wide open the metering spool and to allow cylinder pressure to be relieved downstream through the main hose (V2) and through the main control valve. For better safety and compact assembly, the C2 port is gasket mounted directly on the actuator.



### Technical data

Max. operating pressure	420 bar (6000 psi)
Max. flow	350 l/min. (93 gpm)
Weight	12.2 kg (26.9 lbs)
Flange seal kit <sup>1)</sup>	E00000000000002 (R930004532)
Manifold material	Zinc plated steel
Fluid	Mineral oil (HL, HLP) according DIN 51524
Fluid temperature range	-30 °C to 100 (-22 to 212 °F)
Viscosity range	10 to 500 mm <sup>2</sup> /s (cSt)
Recommended degree of fluid contamination	Class 19/17/14 according to ISO 4406

This valve is designed to be pipe mounted on boom cylinders of hydraulic excavators, and, with specific adjustments, it can become part of load holding and load lowering systems designed to comply with ISO Standard 8643 (hose burst protection).

Note: the Tank vented port must be connected to a "low pressure tank line" (to the joystick tank line, or to tank directly).

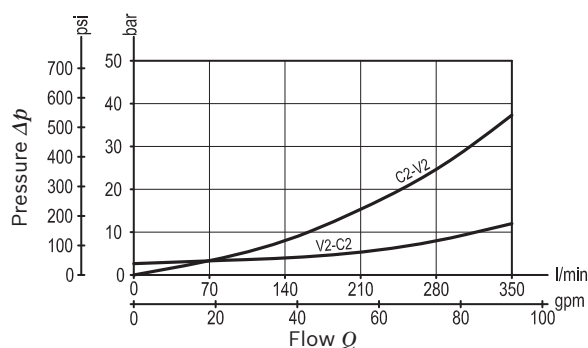
The restricted "E" port must be connected to a "pressure equalizing line" in case of 2 valves fitted to 2 twin cylinders, and may be used as "outlet to tank" for emergency boom lowering in case of pilot pressure failure.

Other technical data see data sheet 18350-50

Note: for applications outside these parameters, please consult us.

<sup>1)</sup> Seals for 10 valves.

### Characteristic curve



Ordering code

08.47.85	X	72	Z
----------	---	----	---

Check and metering valve  
flangeable

Pilot ratio

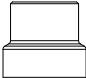
= 03      Leakproof inner hex. socket screw

Port sizes	V2 - C2	E - Pil - T
	3/4" SAE 6000	G 1/4

SPRINGS

	Adj. pressure range bar (psi)	Pres. increase bar/turn (psi/turn)	Std. setting bar (psi)
= 18	Valve 1 6-20 (87-290)	5.7 (83)	7.5 (109) "cracking"
	Valve 2 350-460 (5000-6000)	228 (3306)	350 (5000) "5 l/min"

Tamper resistant cap  
ordering code 11.04.31.001  
Mat. no.      R930000777  
for Valve 2



Preferred types

Type	Material number	Type	Material number
084785037218010	R930090333		

Dimensions

