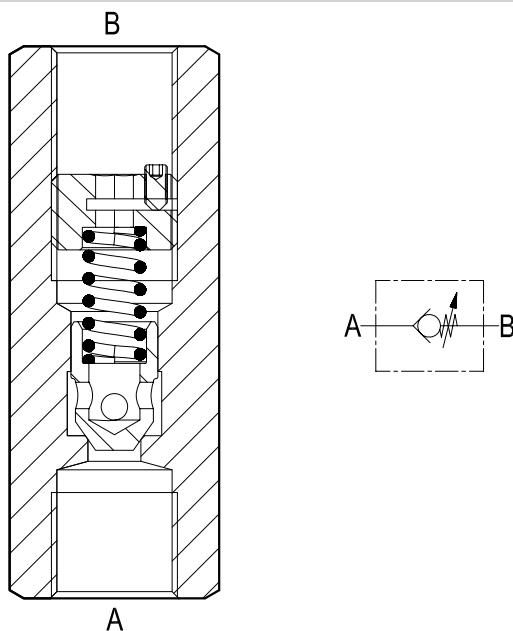


## Check valves

### Line mounted poppet type, with adjustable cracking pressure

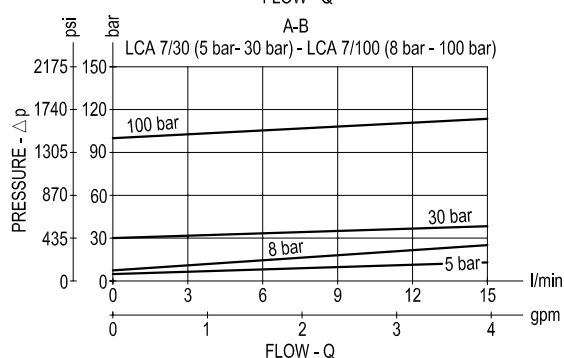
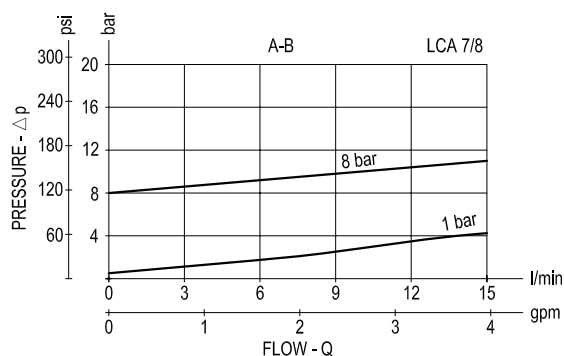
#### LCA 7 Series/LCA 10 Series



## Description

Flow is always allowed to pass from A to B when pressure at A rises above the spring bias pressure and the poppet is pushed from the seat. The spring load is adjustable by turning the internal ring nut with a 4 mm allen wrench for LCA7 (5 mm allen wrench for LCA10): screwing down increases the spring load and increases the cracking pressure (in order to turn the Ring Nut, loosen first the little locking screw with a 1.5 mm Allen wrench; tighten it again once the spring load is adjusted). The valve is normally closed (checked) from B to A.

## Performance

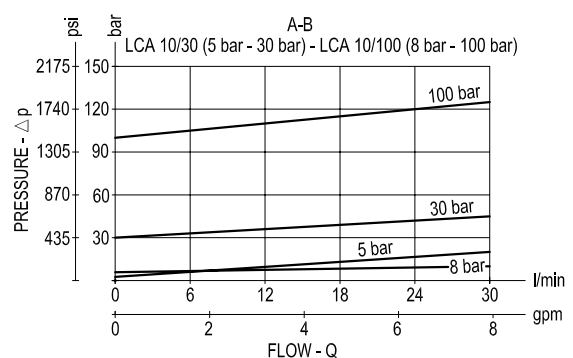


## Technical data

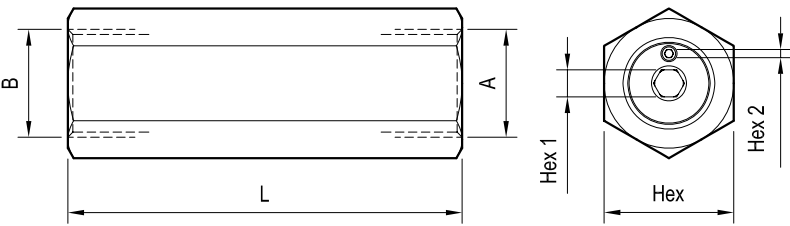
Code	Pressure P max bar (psi)	Flow Q max l/min (gpm)
LCA 7	350 (5000)	25 (7)
LCA 10	350 (5000)	30 (8)

Steel body, zinc plated

$\Delta p$  curves vs. flow in "A-B" free flow direction.  
For cracking pressure range refer to the specific table.



Dimensions



Ports size / Dimensions

Code	Ports size A-B	L mm (inches)	Hex mm (inches)	Hex 1 mm (inches)	Hex 2 mm (inches)
LCA 7	G 1/4	73 (2.87)	19 (0.75)	4 (0.16)	1.5 (0.06)
LCA 10	G 3/8	73 (2.87)	24 (0.95)	5 (0.20)	1.5 (0.06)

Note: when ordering the valves Factory set please, specify the desired cracking pressure expressed in “bar”. Without such specification, the valves will be supplied non adjusted.

Ordering code

LCA	
series 7/8	= 7/8
series 7/30	= 7/30
series 7/100	= 7/100
series 10/30	= 10/30
series 10/100	= 10/100

Pressure range (only bar value see below)

	LCA 7/8	LCA 7/30	LCA 7/100	LCA 10/30	LCA 10/100
Pressure range bar (psi)	min 1 (14.5) max 8 (116)	min 5 (72.5) max 30 (435)	min 8 (116) max 100 (1450)	min 5 (72.5) max 30 (435)	min 8 (116) max 100 (1450)

Type	Material number
LCA 7/8	R932006929
LCA 7/30	R932500275
LCA 7/100	R932006928
LCA10/30	R932500279
LCA 10/100	R932500277

Type	Material number

Type	Material number