

# Counterbalance, relief compensated guided poppet type Common cavity, Size 08

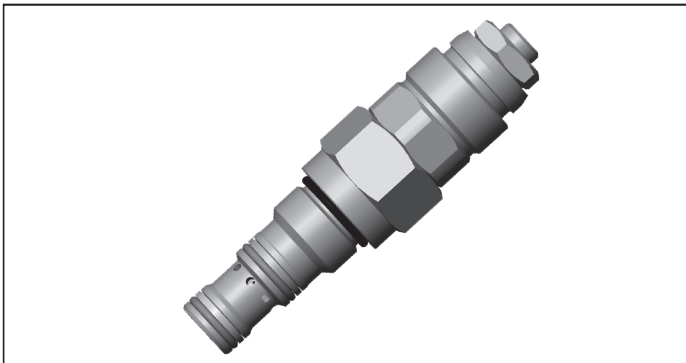
VBSP-08AA

04.54.04 - X - 56 - Z

**RE 18320-06**

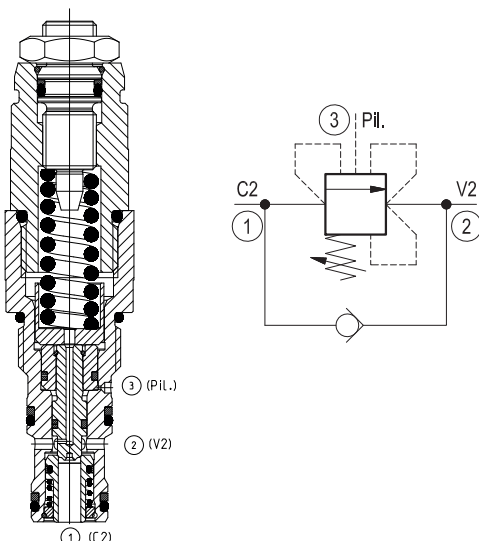
Edition: 05.2022

Replaces: 02.2019



## Description

When pressure at 2 rises above the spring bias pressure, the check seat is pushed away from the piston and flow is allowed from 2 to 1. When load pressure at 1 rises above the pressure setting, the direct-acting, relief function is activated and flow is relieved from 1 to 2. With pilot pressure at 3, the pressure setting is reduced in proportion to the stated ratio of the valve, until fully open with free-flow from 1 to 2. The spring chamber is drained to 2. The valve applies a balanced piston design allowing relief operation at the valve setting independent of back-pressure at 2. However, the piloted opening of the valve remains subject to additive pressure at port 2. Valve design prevents spring going solid and complete unscrewing during adjusting.



## Technical data

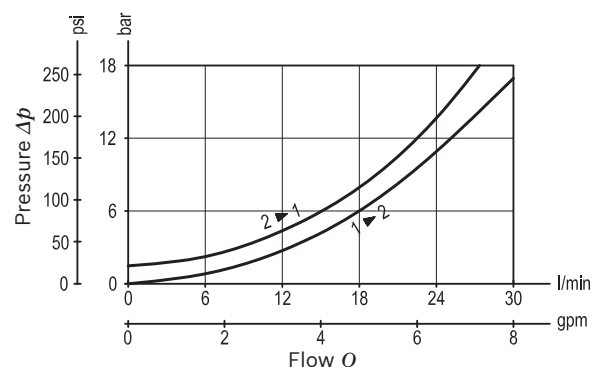
Max. operating pressure	350 bar (5000 psi)
Max. flow	30 l/min (8 gpm)
Max. internal leakage <sup>1)</sup>	15 drops/min.
Fluid temperature range	-30 to 100 °C (-22 to 212 °F)
Installation torque	34 - 41 Nm (25 - 30 ft-lbs)
Weight	0.18 kg (0.4 lbs)
MTTFD	150 years see RE 18350-51
Cavity	CA-08A-3C (see data sheet 18325-70)
Adjustment	according to ISO 4413 with sealed adjustment screw to prevent oil leakage during adjustment
Salt spray test	500h according to DIN EN ISO 9227:2017-07
Lines bodies and standard assemblies	Please refer to section "Hydraulic integrated circuit" or consult factory
Seal kit <sup>2)</sup>	Code: RG08A9010520100 material no: R901101592
Fluids	Mineral-based or synthetics with lubricating properties at viscosities of 10 to 500 mm <sup>2</sup> /s (cSt)
Recommended degree of fluid contamination	Nominal value max. 10µm (NAS 8) / ISO 4406 19/17/14
Installation position	No restrictions
Other Technical Data	See data sheet 18350-50

Pressure setting: at least 1.3 times the load induced pressure and maximum 1.5 times catalogue max nominal setting.

1) At 70% of pressure setting

2) Only external seals for 10 valves

## Characteristic curve



### Ordering code

04.54.04	X	56	Z	*	*
----------	---	----	---	---	---

Counterbalance,  
relief compensated guided, poppet  
type

### Series M to Z

unchanged performances and dimensions

Pilot ratio

**03** 4:1 Without sealed pilot piston

**56** Common cavity, Size 08

**00** Standard (Buna)  
**V0** Viton (FKM)

	SPRINGS		
	Adj. press. range bar (psi)	Pressure increase bar/turn (psi/turn)	Std. setting bar (psi) Q=5 l/min
<b>20</b>	100-210 (1450-3000)	109 (1581)	200 (2900)
<b>35</b>	200-350 (2900-5000)	137 (1987)	350 (5000)

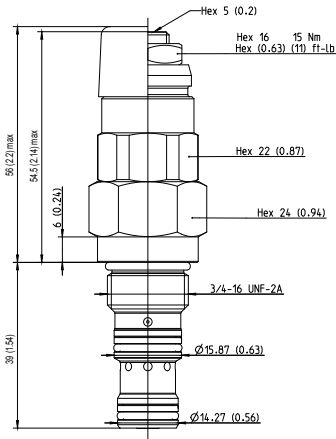
**Note:** Special settings available with optional tamperproof cap.  
Contact factory authorized representative for ordering code.

## Preferred types

Type	Material number
04540403562000M	R930081298
04540403563500M	R930079955

Type	Material number

## Dimensions



OPTION  
Protection cap orange  
Mat. no. R900168151

**Bosch Rexroth Oil Control S.p.A.**  
Via Leonardo da Vinci 5  
P.O. Box no. 5  
41015 Nonantola – Modena, Italy  
Tel. +39 059 887 611  
Fax +39 059 547 848  
compact-hydraulics-cv@boschrexroth.com  
[www.boschrexroth.com/compacthydraulics](http://www.boschrexroth.com/compacthydraulics)

© This document, as well as the data, specifications and other information set forth in it, are the exclusive property of Bosch Rexroth Oil Control S.p.a.. It may not be reproduced or given to third parties without its consent. The data specified above only serve to describe the product. No statements concerning a certain condition or suitability for a certain application can be derived from our information. The information given does not release the user from the obligation of own judgment and verification. It must be remembered that our products are subject to a natural process of wear and aging. Subject to change.