

Counterbalance, standard poppet type differential area, counterclockwise adjustment SUN cavity interchange, T-11A

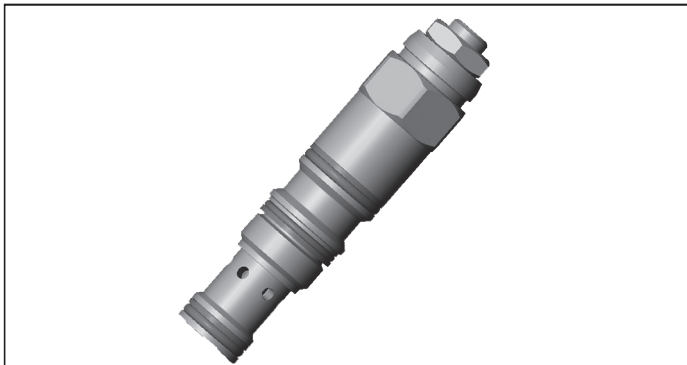
VBSN-08U-RS

04.52.43 - X - 20 - Z

RE 18320-17

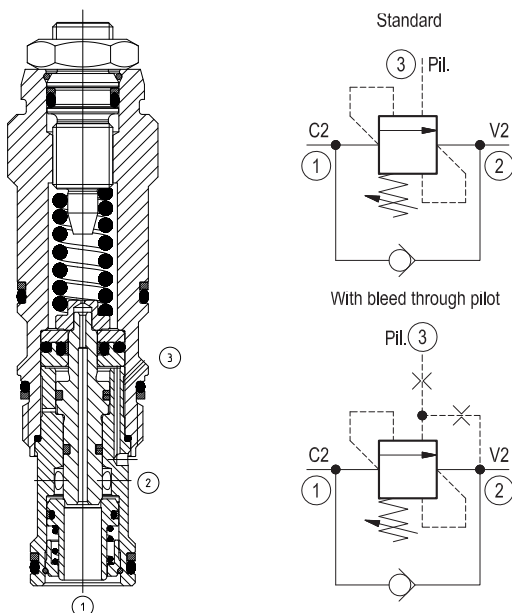
Edition: 02.2023

Replaces: 05.2022



Description

When pressure at 2 rises above the spring bias pressure, the check seat is pushed away from the piston and flow is allowed from 2 to 1. When load pressure at 1 rises above the pressure setting (turn counterclockwise to increase setting - turn clockwise to decrease setting), the direct-acting, differential area relief function is activated and flow is relieved from 1 to 2. With pilot pressure at 3, the pressure setting is reduced in proportion to the stated ratio of the valve, until fully open with free-flow from 1 to 2. Any back-pressure at 2 is additive to the pressure setting in all functions. Valve design prevents spring going solid and complete unscrewing during adjusting.



Technical data

| | |
|---|---|
| Max. operating pressure | 350 bar (5000 psi) |
| Max. flow | 60 l/min (16 gpm) |
| Max. internal leakage ¹⁾ | 5 drops/min. |
| Fluid temperature range | -30 to 100 °C (-22 to 212 °F) |
| Installation torque | 40 - 50 Nm (30 - 37 ft-lbs) |
| Weight | 0.19 kg (0.42 lbs) |
| MTTFD | 150 years see RE 18350-51 |
| Cavity | SUN T-11A |
| Adjustment | according to ISO 4413 with sealed adjustment screw to prevent oil leakage during adjustment |
| Salt spray test | 500h according to DIN EN ISO 9227:2017-07 |
| Lines bodies and standard assemblies | Please refer to section "Hydraulic integrated circuit" or consult factory |
| Seal kit ²⁾ | Code: RG08U9020110100 material no: R901193388 |
| Fluids | Mineral-based or synthetics with lubricating properties at viscosities of 10 to 500 mm ² /s (cSt) |
| Recommended degree of fluid contamination | Nominal value max. 10µm (NAS 8) / ISO 4406 19/17/14 |
| Installation position | No restrictions |
| Other Technical Data | See data sheet 18350-50 |

Pressure setting: at least 1.3 times the load induced pressure and maximum 1.5 times catalogue max nominal setting.

1) At 70% of pressure setting; 15 drops/min. with x=10

2) Only external seals for 10 valves

Characteristic curve

