

Counterbalance, standard poppet type differential area, counterclockwise adjustment SUN cavity interchange, T-17A

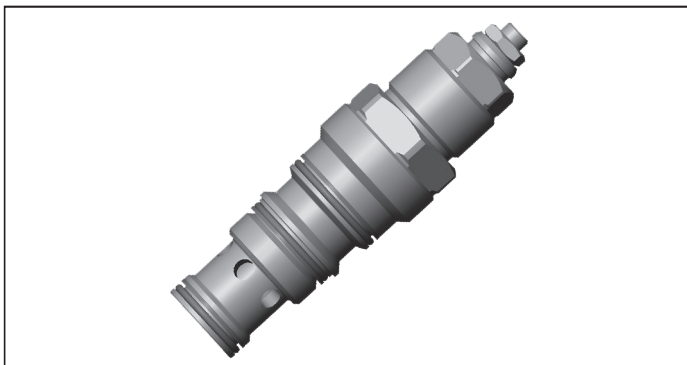
VBSN-16U-RS

04.52.45 - X - 47 - Z

RE 18320-19

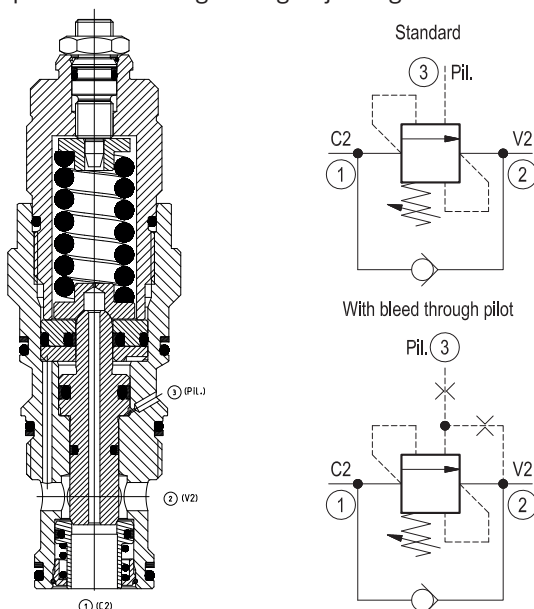
Edition: 05.2022

Replaces: 06.2019



Description

When pressure at 2 rises above the spring bias pressure, the check seat is pushed away from the piston and flow is allowed from 2 to 1. When load pressure at 1 rises above the pressure setting (turn counterclockwise to increase setting - turn clockwise to decrease setting), the direct-acting, differential area relief function is activated and flow is relieved from 1 to 2. With pilot pressure at 3, the pressure setting is reduced in proportion to the stated ratio of the valve, until fully open with free-flow from 1 to 2. Any back-pressure at 2 is additive to the pressure setting in all functions. Valve design prevents spring going solid and complete unscrewing during adjusting.



Technical data

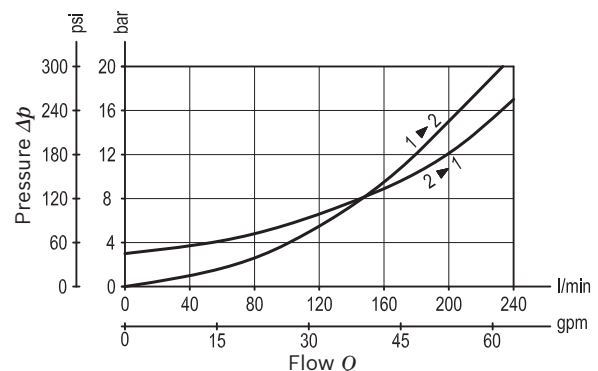
Max. operating pressure	420 bar (6000 psi)
Max. flow	240 l/min (63 gpm)
Max. internal leakage ¹⁾	15 drops/min.
Fluid temperature range	-30 to 100 °C (-22 to 212 °F)
Installation torque	200 - 215 Nm (148 - 159 ft-lbs)
Weight	0.8 kg (1.76 lbs)
MTTFD	150 years see RE 18350-51
Cavity	SUN T-17A
Adjustment	according to ISO 4413 with sealed adjustment screw to prevent oil leakage during adjustment
Salt spray test	500h according to DIN EN ISO 9227:2017-07
Lines bodies and standard assemblies	Please refer to section "Hydraulic integrated circuit" or consult factory
Seal kit ²⁾	Code: RG16U9020110100 material no: R930000995
Fluids	Mineral-based or synthetics with lubricating properties at viscosities of 10 to 500 mm ² /s (cSt)
Recommended degree of fluid contamination	Nominal value max. 10µm (NAS 8) / ISO 4406 19/17/14
Installation position	No restrictions
Other Technical Data	See data sheet 18350-50

Pressure setting: at least 1.3 times the load induced pressure and maximum 1.5 times catalogue max nominal setting.

1) At 70% of pressure setting

2) Only external seals for 10 valves

Characteristic curve



Ordering code

04.52.45	X	47	Z	*	*
----------	---	----	---	---	---

Counterbalance, standard poppet type, differential area, counterclockwise adjustment

Series M to Z
unchanged performances and dimensions

00 Standard (Buna)
V0 Viton (FKM)

Pilot ratio					SPRINGS			
					Adj. press. range bar (psi)		Pressure increase bar/turn (psi/turn)	Std. setting bar (psi) cracking pressure
03 4:1 standard version			for X= 03		20	70-280 (1000-4000)	80 (1160)	200 (2900)
10 8:1 standard version					40	200-420 (2900-6000)	118 (1711)	350 (5000)
42 2:1 with bleed through pilot			for X= 10		20	70-280 (1000-4000)	49 (711)	200 (2900)
					40	200-420 (2900-6000)	77 (1117)	350 (5000)
47 SUN cavity interchange, T-17A			for X= 42		40	200-420 (2900-6000)	118 (1711)	350 (5000)

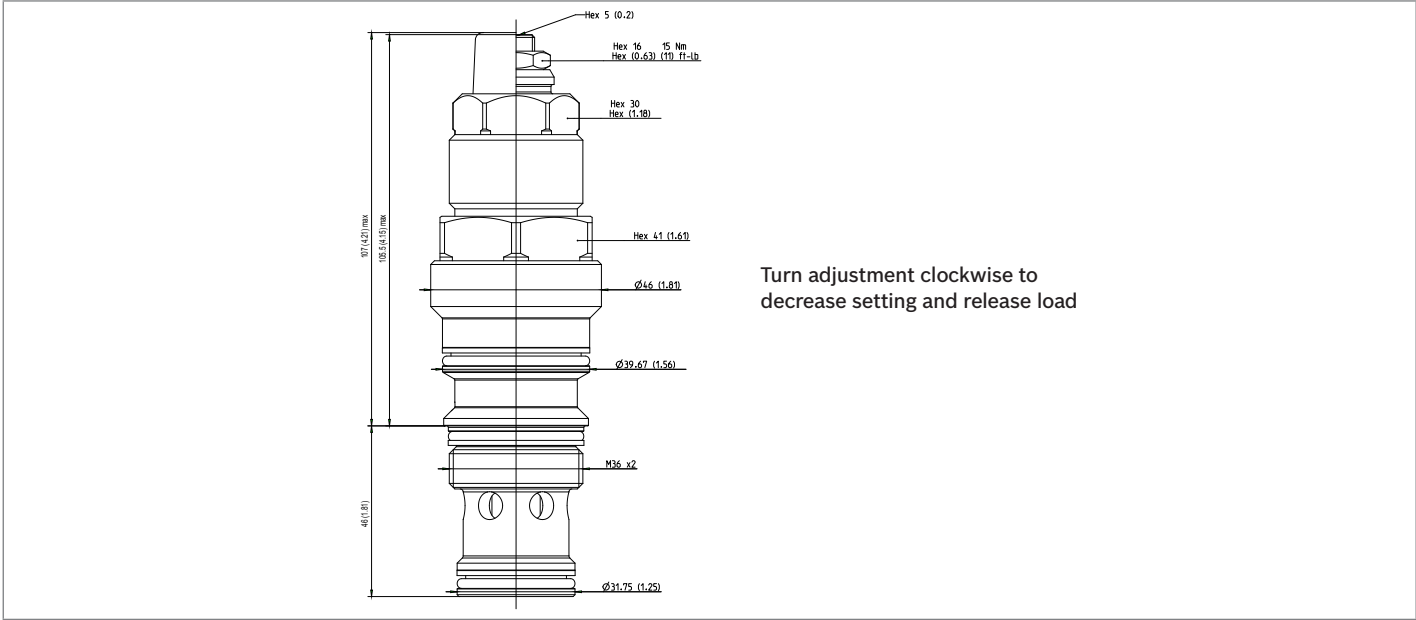
Note: Special settings available with optional tamperproof cap.
Contact factory authorized representative for ordering code.

Preferred types

Type	Material number
04524503472000M	R930081290
04524503474000M	R930081291
04524510472000M	R930081292

Type	Material number
04524510474000M	R930081293
04524542474000M	R930081374

Dimensions



Bosch Rexroth Oil Control S.p.A.
Via Leonardo da Vinci 5
P.O. Box no. 5
41015 Nonantola – Modena, Italy
Tel. +39 059 887 611
Fax +39 059 547 848
compact-hydraulics-cv@boschrexroth.com
www.boschrexroth.com/compacthydraulics

© This document, as well as the data, specifications and other information set forth in it, are the exclusive property of Bosch Rexroth Oil Control S.p.a.. It may not be reproduced or given to third parties without its consent. The data specified above only serve to describe the product. No statements concerning a certain condition or suitability for a certain application can be derived from our information. The information given does not release the user from the obligation of own judgment and verification. It must be remembered that our products are subject to a natural process of wear and aging. Subject to change.