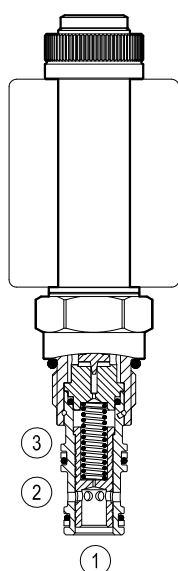


# Proportional valves pilot operated pressure reducing

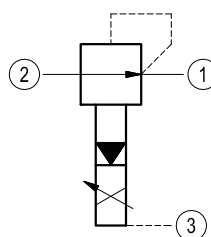
Common cavity, Size 10

VEP-5A-2R-06-P

OD.91.06.77 - Y - 00



Version 06



## General

Weight	kg (lbs)	0.3 (0.66 )
Installation orientation		Optional
Ambient temperature range	°C (°F)	-30 to 60 (-22 to 140)

## Hydraulic

Max. operating pressure port 2	bar (psi)	280 (4000)
Max. operating pressure port 1	bar (psi)	210 (3000)
Flow range	l/min.(gpm)	2-60 (0.5-16)
Max. internal leakage	cm³/min. (cu.in./min.)	50 (3)
Fluid temperature range	°C (°F)	-20 to 80 (-4 to 176)

Fluids		Mineral-based or synthetics with lubricating properties at viscosities of 15 to 380 mm²/s (cSt)
Installation torque	Nm (ft-lbs)	44-56 (33-41)
Recommended degree of fluid contamination		Nominal value max. 10µm (NAS 8) ISO 4406 19/17/14
Cavity		CA-10A-3N see RE 18325-70
Lines bodies and standard assemblies		Please refer to section "Hydraulic integrated circuit" or consult factory
Seal kit	code material no.	RG10A3010520100 R901111369
Seal kit coil	code material no.	RG19A1PNBR7010 R934003964
Other technical data		See data sheet RE 18350-50

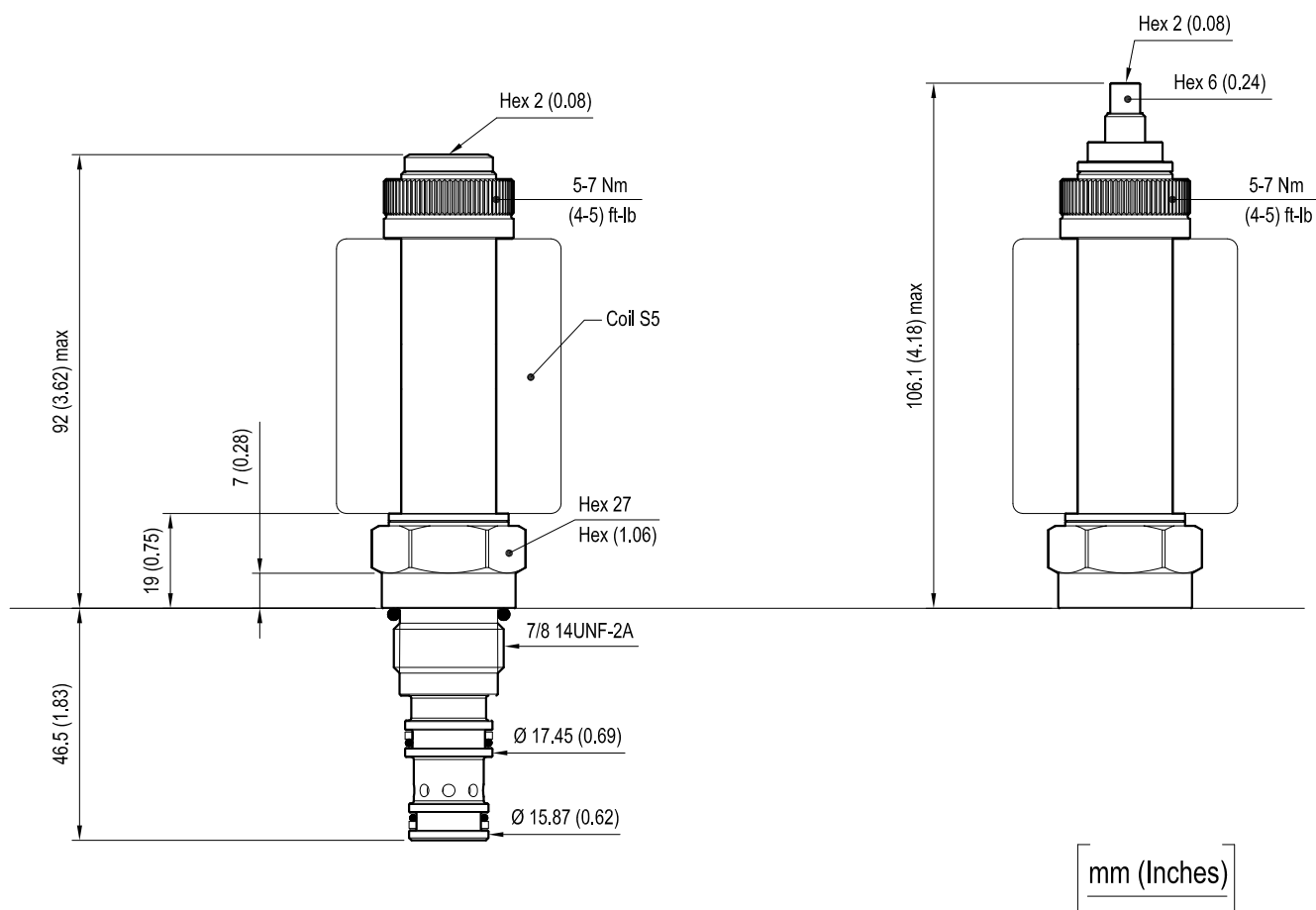
## Electrical

Type of voltage	12 DC voltage
Coil type	S5
Supply voltage	See data sheet RE 18325-90
Nominal voltage	± 10%
Power consumption	W 23
Duty cycle	% 100
Type of protection	See data sheet RE 18325-90

Note: Coils must be ordered separately.

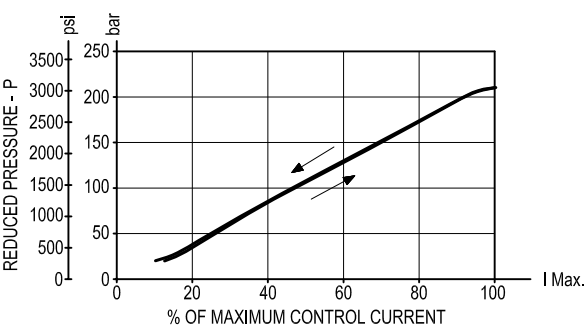
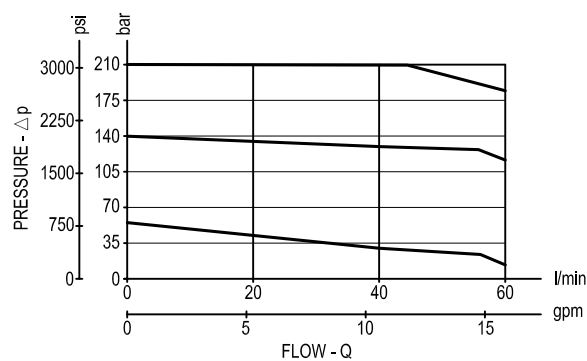
## Dimensions

### Proportional valves pilot operated pressure reducing



Allowed back pressure at port 3 (Y): 5 bar (73 psi)  
max

Performance graphs



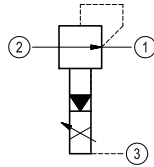
	I	P bar (psi)	Coils
I min:	0.1 A	15 (218)	12 DC
I max:	1.3 A	210 (3045)	12 DC
PMW Frequency: 120-150 Hz			
Hysteresis: < 5%			

- Note (1): It is recommended to use coil 12 DC.
- Note (2): It is recommended to bleed air carefully before operation.
- Note (3): Performance using coil without diode.

### Ordering code

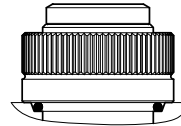
OD.91	06	77	Y	00
-------	----	----	---	----

Proportional valves pilot operated pressure reducing



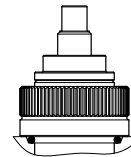
standard type

03 =



knob style manual override

04 =



Common cavity: CA-10A-3N

[illegible][illegible]