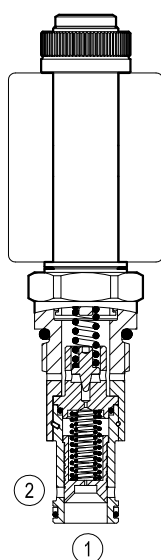


Proportional valves pilot operated relief

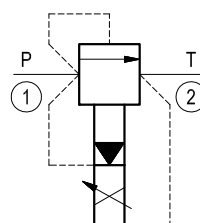
Special cavity, 065

VEP-5B-2S-P

OD.94.05.61 - Y - Z



Version 05



General

Weight	kg (lbs)	0.36 (0.79)
Installation orientation		Optional
Ambient temperature range	°C (°F)	-30 to 60 (-22 to 140)

Hydraulic

Max. operating pressure	bar (psi)	350 (5000)
Flow range	l/min.(gpm)	8-150 (2-40)
Max. internal leakage (*)	cm³/min. (cu.in./min.)	180 (11)
Fluid temperature range	°C (°F)	-20 to 80 (-4 to 176)

Fluids Mineral-based or synthetics with lubricating properties at viscosities of 15 to 380 mm²/s (cSt)

Installation torque Nm (ft-lbs) 121-133 (90-99)

Recommended degree of fluid contamination Nominal value max. 10µm (NAS 8) ISO 4406 19/17/14

Cavity 065 see RE 18325-75

Lines bodies and standard assemblies Please refer to section "Hydraulic integrated circuit" or consult factory

Seal kit code RG0065010520100 material no. R930001958

Seal kit coil code RG19A1PNBR7010 material no. R934003964

Other technical data See data sheet RE 18350-50

(*) at 20% of pressure setting. Oil at 46 cSt.

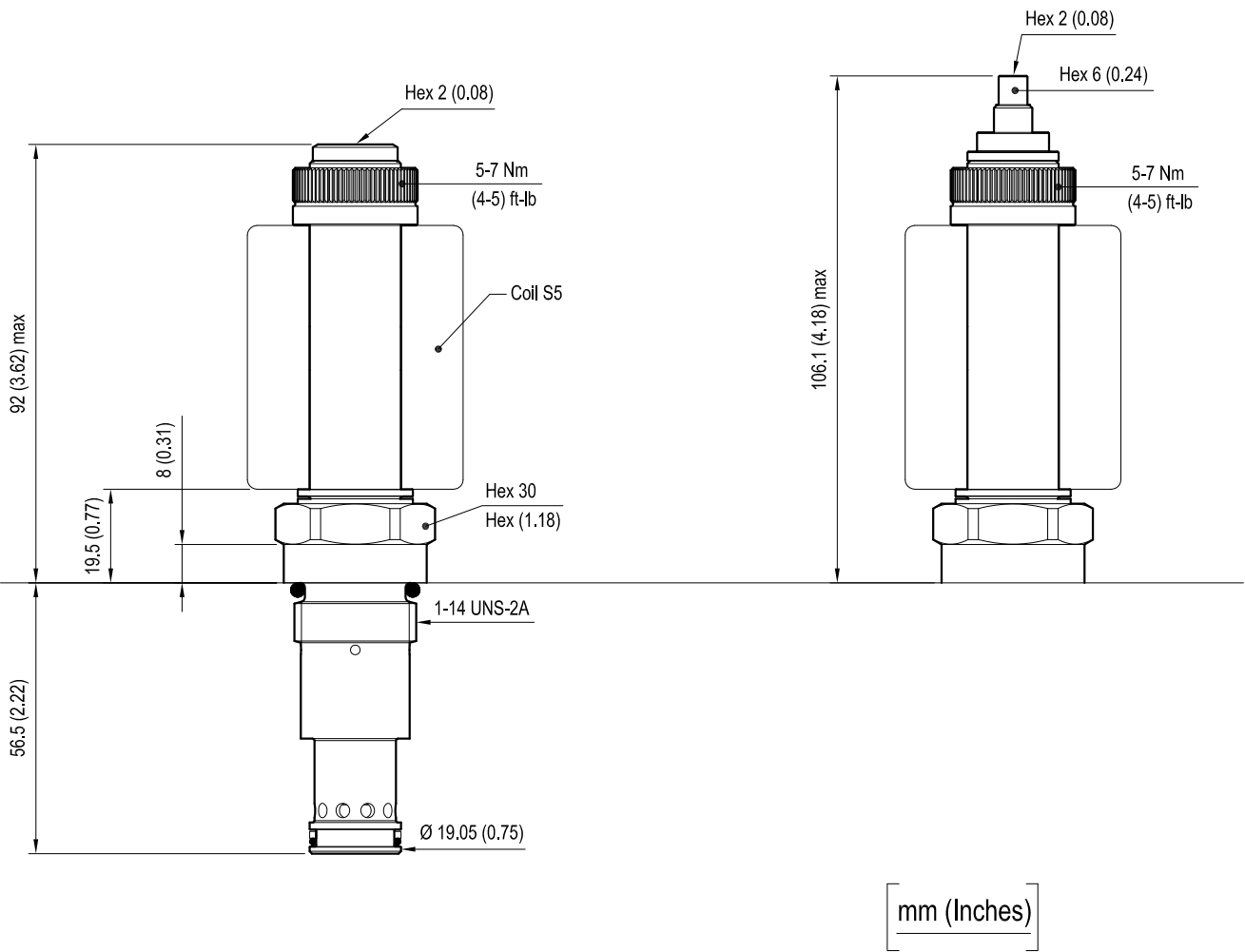
Electrical

Type of voltage	DC voltage
Coil type	S5
Supply voltage	V 12 DC
Nominal voltage	± 10%
Power consumption	W 23
Duty cycle	% 100
Type of protection	See data sheet RE 18325-90

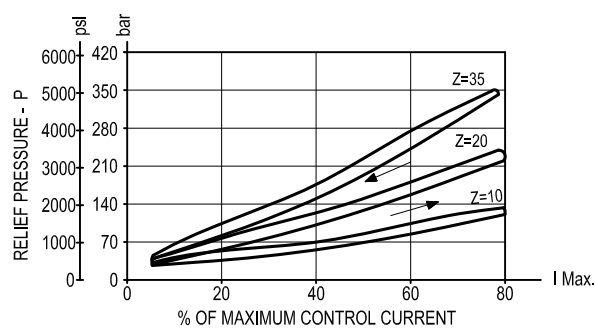
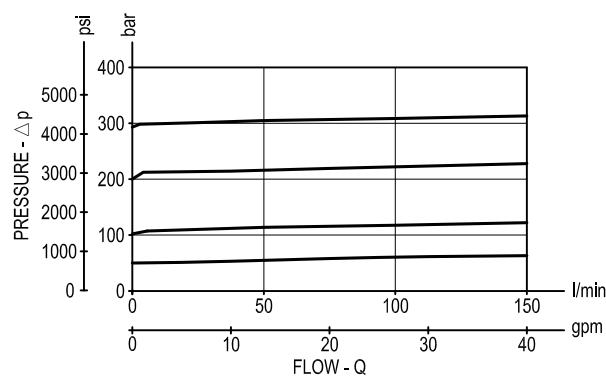
Note: Coils must be ordered separately.

Dimensions

Proportional valves pilot operated relief



Performance graphs



PMW Frequency: 120-150 Hz

Hysteresis: < 5%

Note: Performance using coil without diode.

Ordering code

OD.94

05

61

Y

Z

Proportional valves pilot operated relief

Special cavity: 065

Operating range				
	Pressure range bar (psi)	Voltage V	I Min. A (±10%)	I Max. A (±10%)
= 10	20-120 (290-1740)	12	0.2	1.5
= 20	20-220 (290-3190)	12	0.1	1.7
= 35	30-350 (440-5000)	12	0.2	1.7

Performance using coil without diode.
standard type

03 =

04 =

Type	Material number	Type	Material number
OD940561031000	R934001541		
OD940561032000	R934001542		
OD940561033500	R934001543		
OD940561041000	R934001544		
OD940561042000	R934001545		
OD940561043500	R934003850		