

Solenoid operated valves direct acting poppet type

2-way normally closed

Common cavity, Size 08

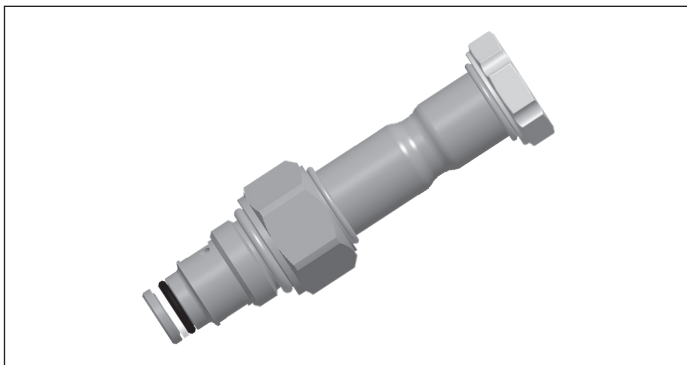
VED-16-08A-NC

OD.11 - X - 18 - Y - Z

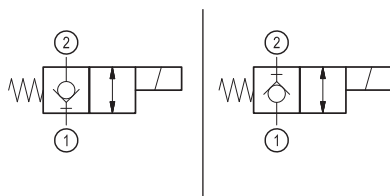
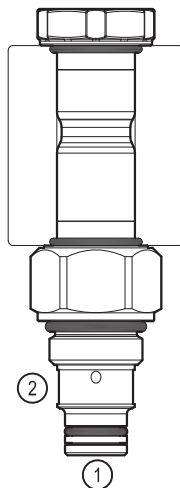
RE 18324-16

Edition: 06.2019

Replaces: 06.2018



PATENT PENDING



Technical data

General		
Weight		0.20 kg (0.44 lbs)
Installation orientation		Unrestricted
Storage ambient temperature range		-40 to 100 °C (-40 to 212 °F)
Operating ambient temperature range		-30 to 90 °C (-22 to 194 °F)
Hydraulic		
Max. operating pressure		350 bar (5000 psi)
Rated flow		1.5 l/min (0.4 gpm)
Max. internal leakage:		20 drops/min.
Switching time		Closing ≤ 100 ms
		Opening ≤ 50 ms
Fluid temperature range		-20 to 80 °C (-4 to 176 °F)
Fluids: Mineral-based or synthetics with lubricating properties at viscosities of 20 to 380 mm²/s (cSt)		
Installation torque		39 - 51 Nm (29 - 38 ft-lbs)
Recommended degree of fluid contamination		Nominal value max. 10 µm (NAS 8) ISO 4406 19/17/14
MTTFD		150 years see RE 18350-51
Common cavity		CA-08A-2N see 18325-70
Seal kit for X=01,03	code	RG08A2010520100
	material no.	R901101437
Seal kit coil and standard cap	code	RG02Z0010000100
	material no.	R930067869
Seal kit coil and protective cap only for Y=D	code	RG03Z0010000100
	material no.	R930067870
Other technical data		See data sheet 18350-50
Electrical		
Type of voltage		DC voltage
Coil type		D36
Supply voltage		See data sheet 18325-90
Voltage tolerance against ambient temperature		See characteristic curve
Power consumption		20 W
Type of protection		See data sheet 18325-90
Note: Coils must be ordered separately		

Ordering code

OD.11	X	18	Y	Z	0000	*
-------	---	----	---	---	------	---

Solenoid operated valves
direct acting poppet type
2-way normally closed

bidirectional type

01

bidirectional type

03

0 = With buna seal
8 = With buna seal
V = With Viton seal
P = With buna seal and protective cap for override version **D**
T = With Viton seal and protective cap for override version **D**

A = Standard
D = Knob style manual override
E = Pull style manual override
F = Hand operated pull style manual override

Series 0/A to L
unchanged performances and dimensions

Common cavity: CA-08A-2N

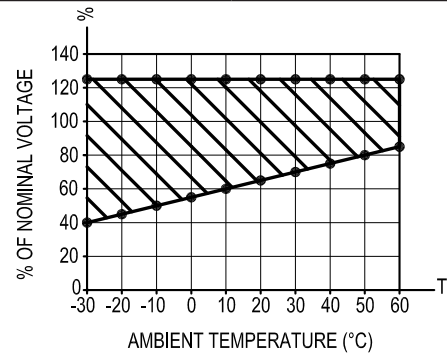
Preferred types

Type	Material number
OD110118A000000	R930066944
OD110118D000000	R930066949
OD110318A000000	R930066942
OD110318D000000	R930069504

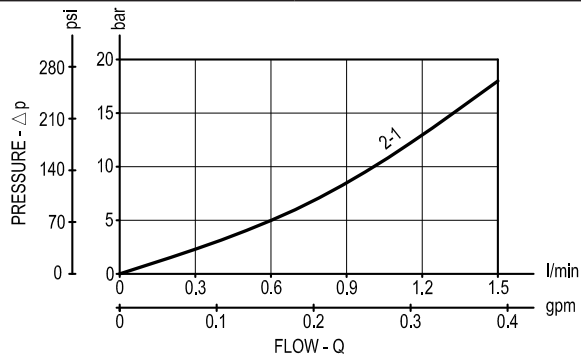
Type	Material number

Characteristic curves

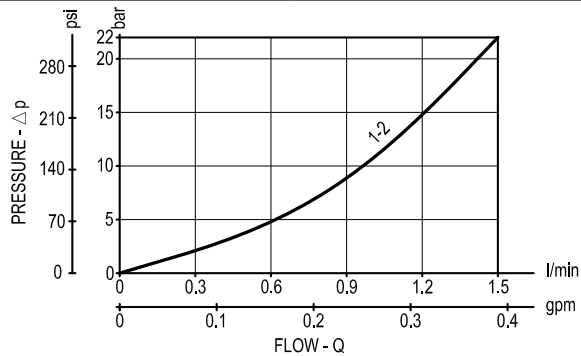
All Versions - Admissible supply voltage Vs. Ambient temperature at 100% duty cycle

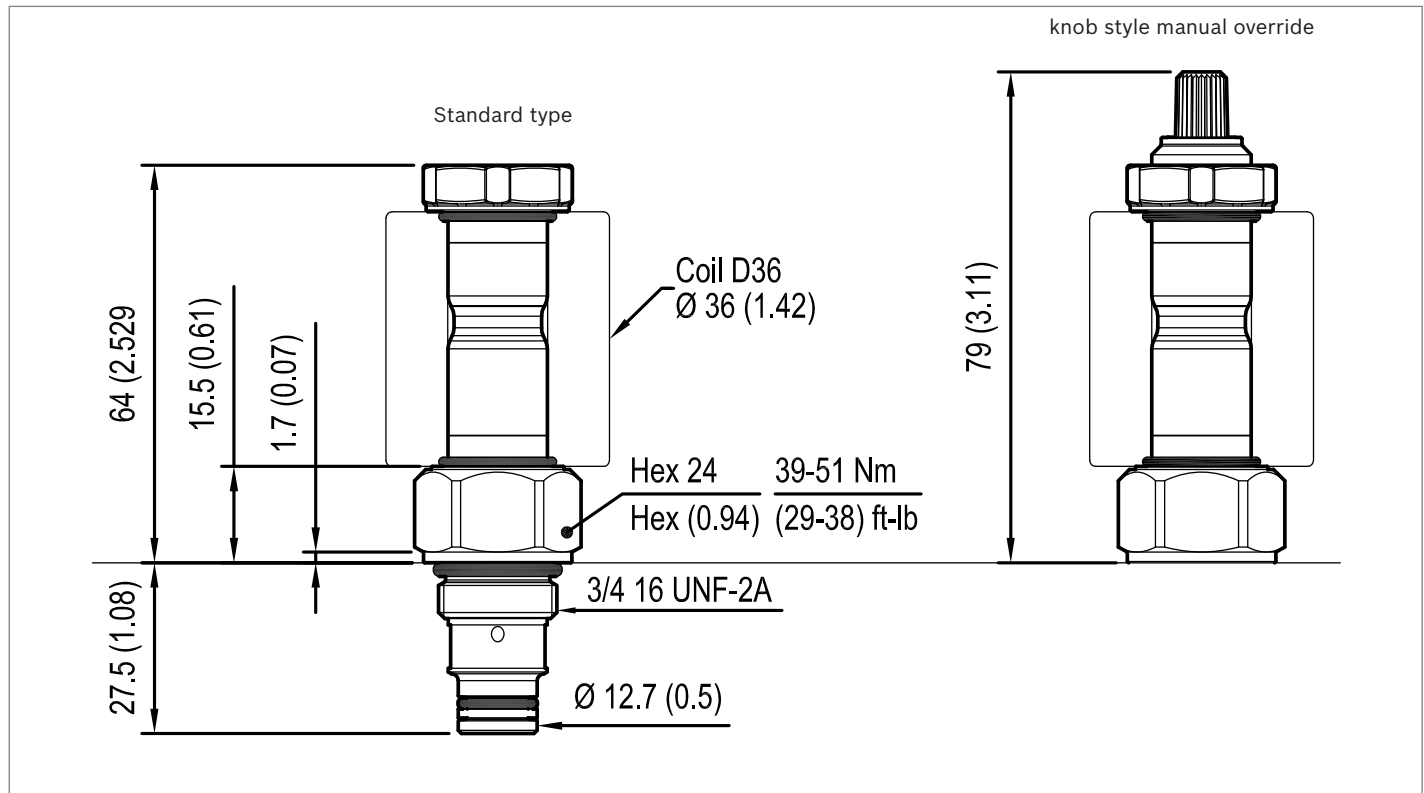


Versions 01



Versions 03



Dimensions**Solenoid operated valves, poppet 2-way
normally closed****Bosch Rexroth Oil Control S.p.A.**

Via Leonardo da Vinci 5
P.O. Box no. 5
41015 Nonantola – Modena, Italy
Tel. +39 059 887 611
Fax +39 059 547 848
compact-hydraulics-cv@boschrexroth.com
www.boschrexroth.com/compacthydraulics

© This document, as well as the data, specifications and other information set forth in it, are the exclusive property of Bosch Rexroth Oil Control S.p.a.. It may not be reproduced or given to third parties without its consent. The data specified above only serve to describe the product. No statements concerning a certain condition or suitability for a certain application can be derived from our information. The information given does not release the user from the obligation of own judgment and verification. It must be remembered that our products are subject to a natural process of wear and aging. Subject to change.