

# Solenoid operated valves direct acting poppet type

## 2-way normally open

### Common cavity, Size 08

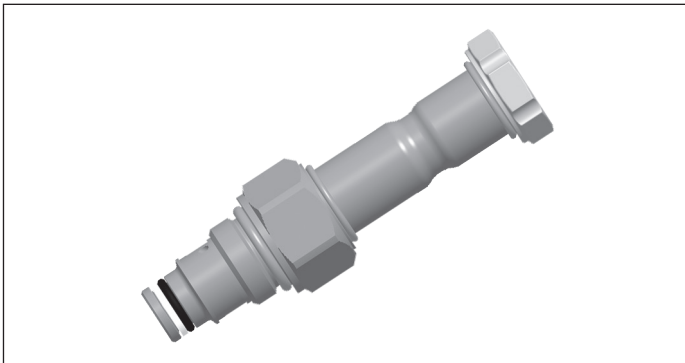
VED-16-08A-NA

OD.11 - X - 18 - Y - Z - 00

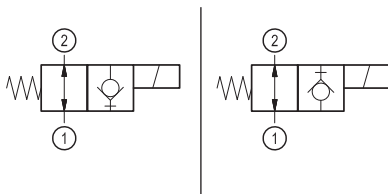
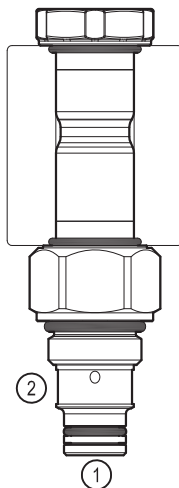
**RE 18324-17**

Edition: 06.2019

Replaces: 06.2018



**PATENT PENDING**



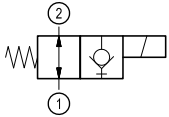
#### Technical data

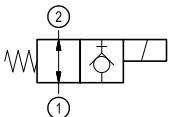
General		
Weight		0.20 kg (0.44 lbs)
Installation orientation		Unrestricted
Storage ambient temperature range		-40 to 100 °C (-40 to 212 °F)
Operating ambient temperature range		-30 to 90 °C (-22 to 194 °F)
Hydraulic		
Max. operating pressure		350 bar (5000 psi)
Rated flow		1.5 l/min (0.4 gpm)
Max. internal leakage:		20 drops/min.
Switching time		Closing ≤ 100 ms
		Opening ≤ 50 ms
Fluid temperature range		-20 to 80 °C (-4 to 176 °F)
Fluids: Mineral-based or synthetics with lubricating properties at viscosities of 20 to 380 mm²/s (cSt)		
Installation torque		39 - 51 Nm (29 - 38 ft-lbs)
Recommended degree of fluid contamination		Nominal value max. 10 µm (NAS 8) ISO 4406 19/17/14
MTTFD		150 years see RE 18350-51
Common cavity		CA-08A-2N see 18325-70
Seal kit for X=02,04	code	RG08A2010520100
	material no.	R901101437
Seal kit coil and standard cap	code	RG02Z0010000100
	material no.	R930067869
Seal kit coil and protective cap only for Y=B	code	RG03Z0010000100
	material no.	R930067870
Seal kit coil and protective cap only for Y=C	code	RG04Z0010000100
	material no.	R930069171
Other technical data		See data sheet 18350-50
Electrical		
Type of voltage		DC voltage
Coil type		D36
Supply voltage		See data sheet 18325-90
Voltage tolerance against ambient temperature		See characteristic curve
Power consumption		20 W
Type of protection		See data sheet 18325-90
Note: Coils must be ordered separately		

Ordering code

OD.11	X	18	Y	Z	0000	*
-------	---	----	---	---	------	---

Solenoid operated valves  
direct acting poppet type  
2-way normally open

bidirectional type  
**02**

bidirectional type  
**04**

Series 0/A to L  
unchanged performances and dimensions

0 = With buna seal  
V = With Viton seal  
P = With buna seal and protective cap for override version **B** and **C**  
T = With Viton seal and protective cap for override version **B** and **C**

A = Standard  
B = Push style manual override  
C = Push and twist style manual override

Common cavity: CA-08A-2N

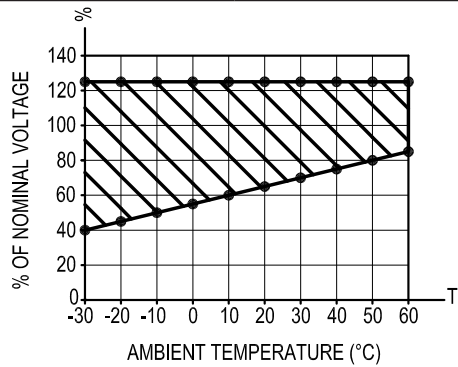
Preferred types

Type	Material number
OD110218A000000	R930066943
OD110218B000000	R930065612
OD110218C000000	R930066948
OD110418A000000	R930066947
OD110418B000000	R930066950
OD110418C000000	R930066946

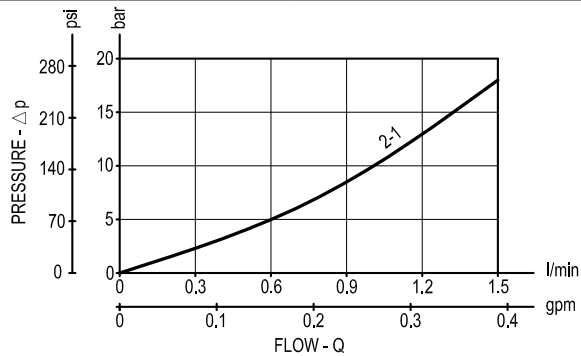
Type	Material number

Characteristic curves

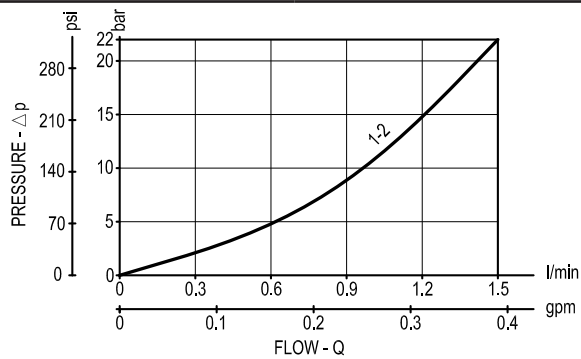
All Versions - Admissible supply voltage Vs. Ambient temperature at 100% duty cycle

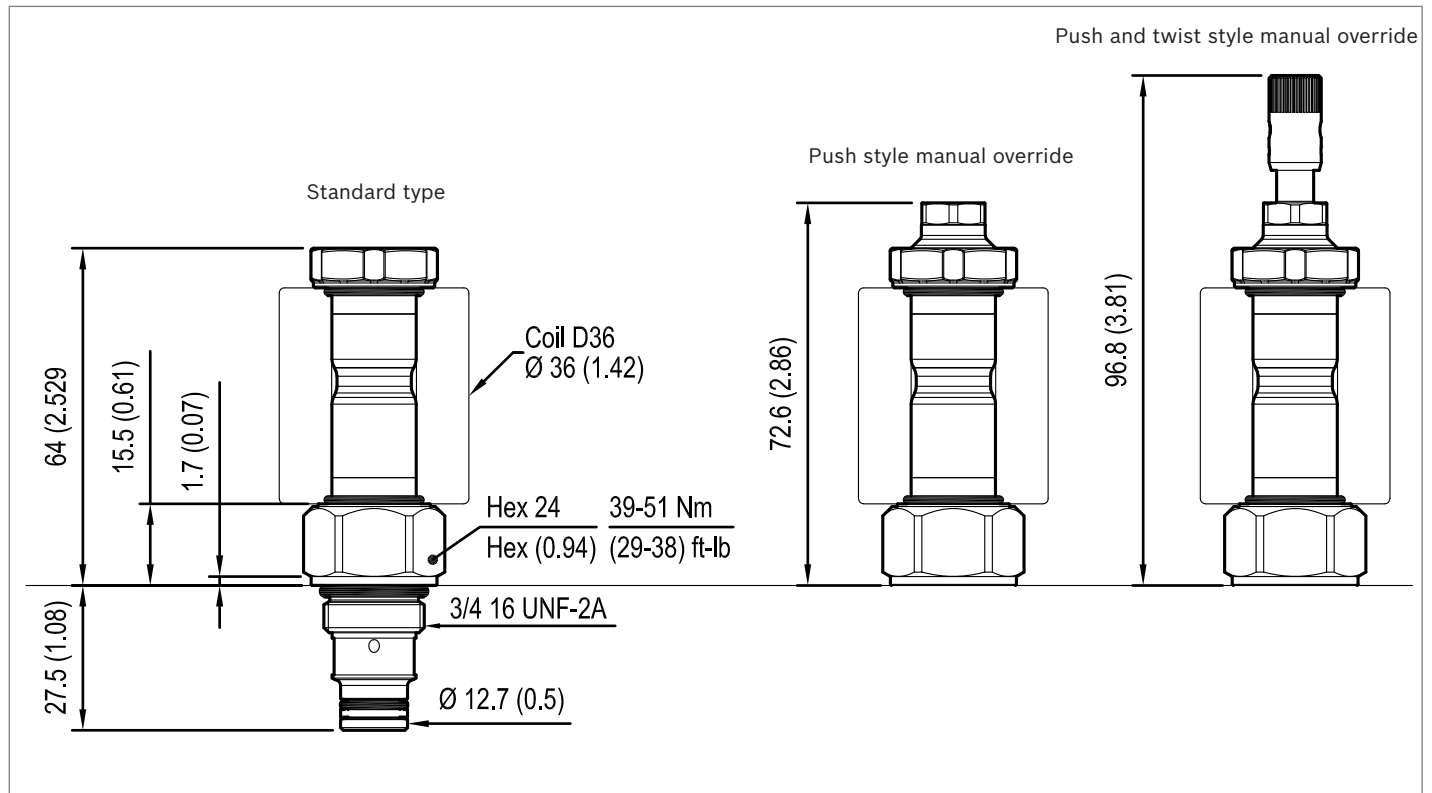


Versions 02



Versions 04



**Dimensions****Solenoid operated valves, poppet 2-way  
normally closed****Bosch Rexroth Oil Control S.p.A.**

Via Leonardo da Vinci 5  
P.O. Box no. 5  
41015 Nonantola – Modena, Italy  
Tel. +39 059 887 611  
Fax +39 059 547 848  
compact-hydraulics-cv@boschrexroth.com  
www.boschrexroth.com/compacthydraulics

© This document, as well as the data, specifications and other information set forth in it, are the exclusive property of Bosch Rexroth Oil Control S.p.A.. It may not be reproduced or given to third parties without its consent. The data specified above only serve to describe the product. No statements concerning a certain condition or suitability for a certain application can be derived from our information. The information given does not release the user from the obligation of own judgment and verification. It must be remembered that our products are subject to a natural process of wear and aging. Subject to change.