

Proportional valves direct acting spool

4-way 3-position

Common cavity, Size 10

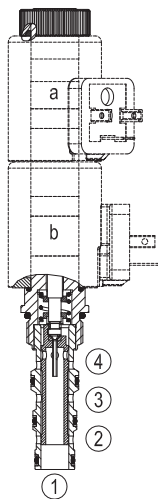
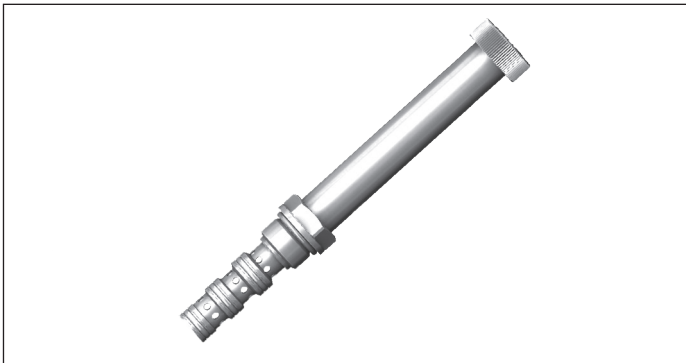
VEPS-10A-43

OD.14 - X - 78 - KP2 - Y - 00

RE 18324-66

Edition: 07.2018

Replaces: 06.2017



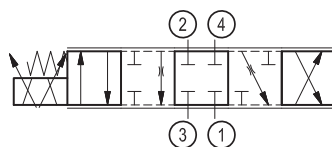
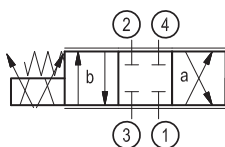
Technical data

General	
Weight (with coils)	0.85 kg (1.87 lbs)
Installation position	Any
Ambient temperature range	-40 to 110 °C (-40 to 230 °F)
Salt spray test to DIN 50021	720 h
Hydraulic	
Max. operating pressure port 2, 3, 4	350 bar (5075 psi)
Max. operating pressure port 1	250 bar (3625 psi)
Max. flow	25 l/min. (7 gpm)
Max. internal leakage	< 60 ml/min. (with $\Delta p=250$ bar; HLP46, $T_{oil} = 40^\circ\text{C}$)
Fluid temperature range	-40 to 80 °C (-40 to 176 °F)
Fluids: Mineral-based or synthetics with lubricating properties at viscosities of 5 to 1000 mm ² /s (preferably 10 to 100 mm ² /s)	
Recommended degree of fluid contamination	Nominal value max. 10µm (NAS 8) ISO 4406 19/17/14
Cavity	CA-10A-4N see 18325-70
Load cycles	2 Mio.
Spare parts	
Cavity seal kit	material no. R961005190
Nut	material no. R901241052
O-Ring for pole tube	material no. R900007769
O-Ring for pole tube	material no. R913014944
Electrical	
Type of voltage	DC voltage
Coil type	GP37 see 18325-90

Note: coils must be ordered separately.

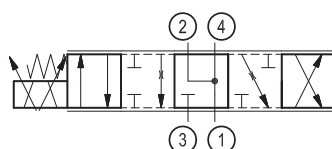
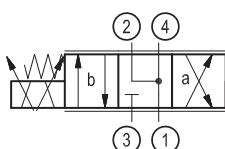
For best results it is recommended to have at least 5 bar back pressure in the tank line (e.g. 5 bar check valve).

▼ Version 10



① T
② A
③ P
④ B

▼ Version 20



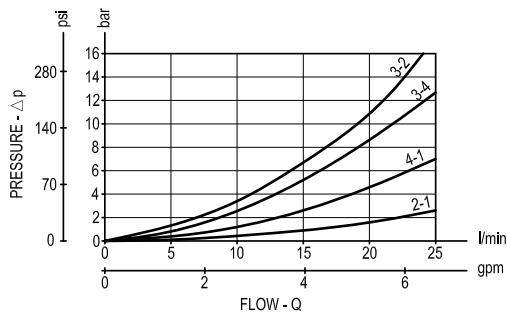
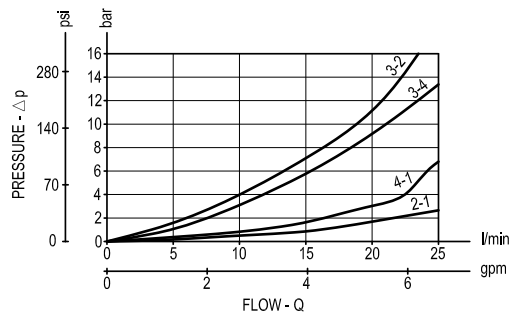
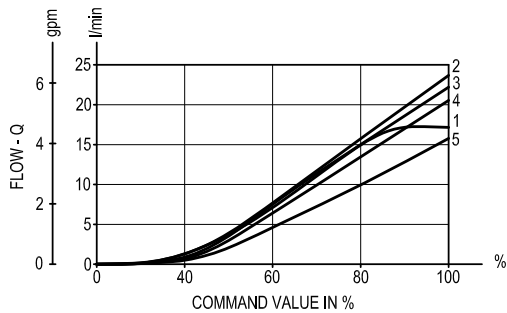
Ordering code

Proportional valves direct acting spool 4-way 3-position		OD14	X	78	KP2	Y	0	0
Version 10 Version 20								
without manual override 0 with pull/push manual override 1								

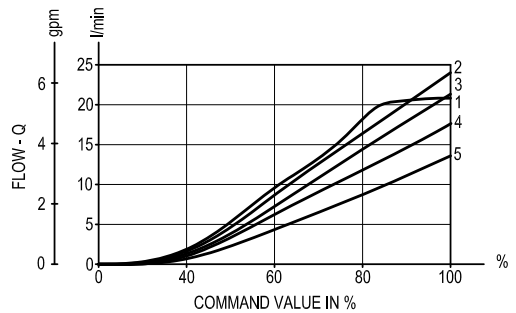
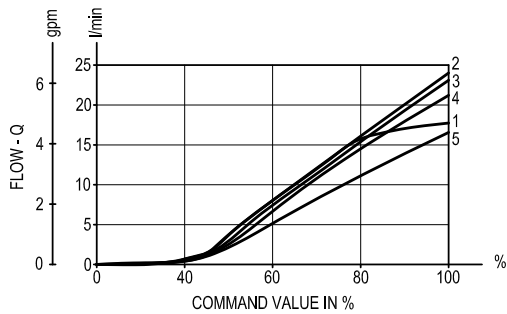
Preferred types

Type	Material number
OD141078KP2000	R901271834
OD142078KP2000	R901271837

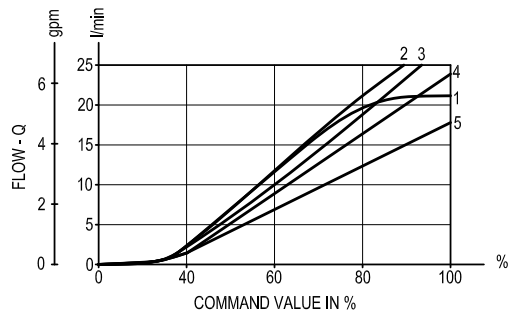
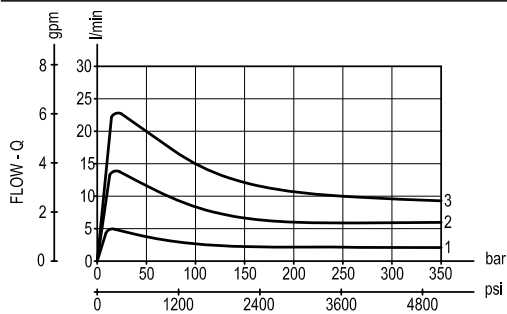
Type	Material number
OD141078KP2100	R901300077
OD142078KP2100	R901300083

Characteristic curves**Version 10****Version 20****Version 10 - Direction of flow 3-2**

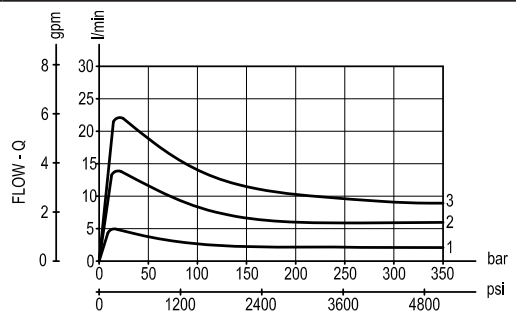
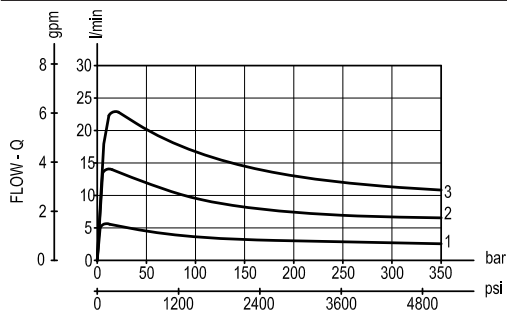
- 1 $\Delta p = 10$ bar constant
- 2 $\Delta p = 20$ bar constant
- 3 $\Delta p = 30$ bar constant
- 4 $\Delta p = 50$ bar constant
- 5 $\Delta p = 100$ bar constant

Version 10 - Direction of flow 3-4**Version 20 - Direction of flow 3-2**

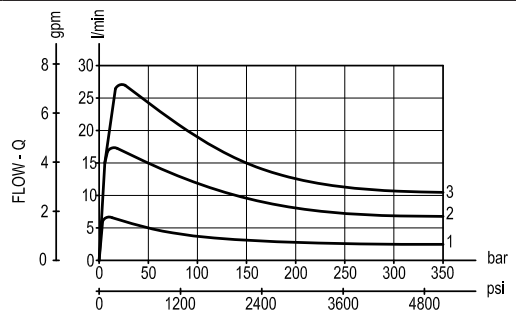
- 1 $\Delta p = 10$ bar constant
- 2 $\Delta p = 20$ bar constant
- 3 $\Delta p = 30$ bar constant
- 4 $\Delta p = 50$ bar constant
- 5 $\Delta p = 100$ bar constant

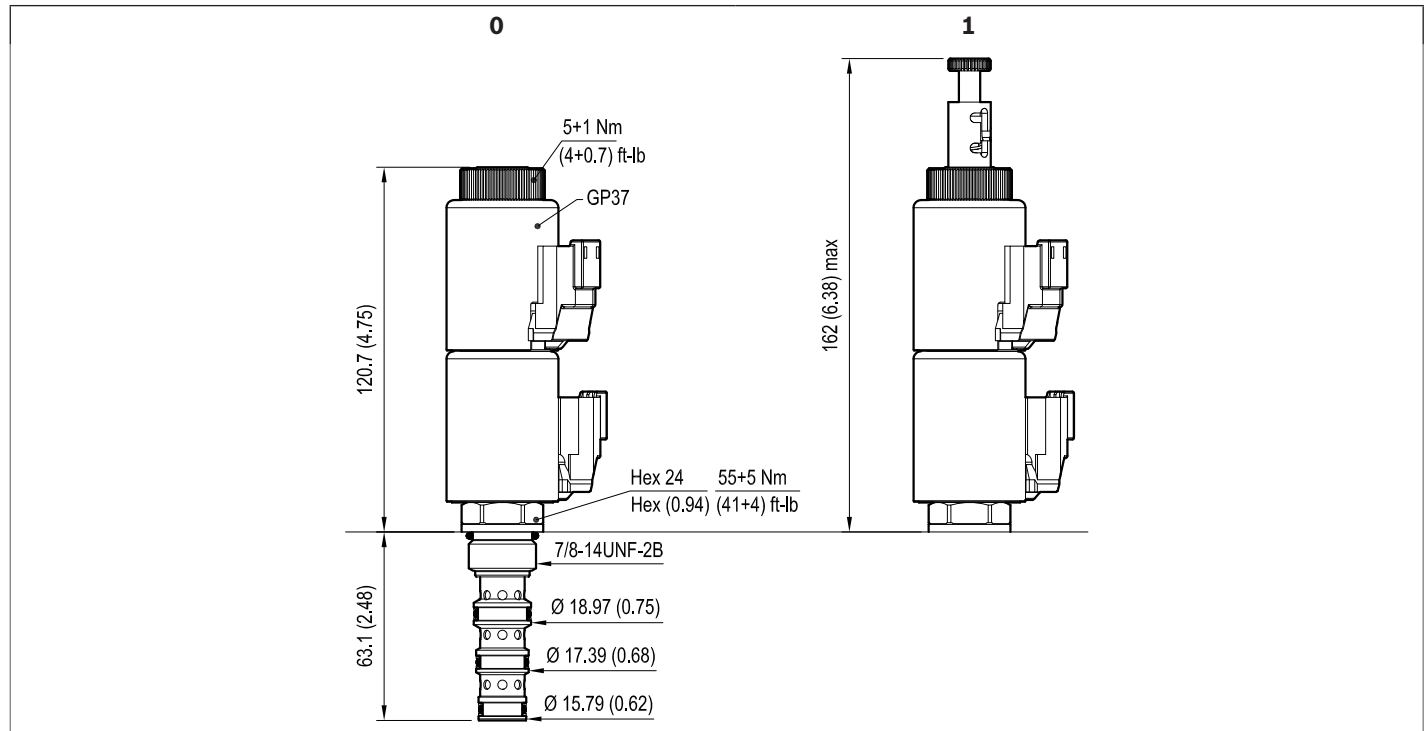
Version 20 - Direction of flow 3-4**Version 10 - Direction of flow 3-2 / 4-1**

- 1 Command value = 50%
- 2 Command value = 75%
- 3 Command value = 100%

Version 10 - Direction of flow 3-4 / 2-1**Version 20 - Direction of flow 3-2 / 4-1**

- 1 Command value = 50%
- 2 Command value = 75%
- 3 Command value = 100%

Version 20 - Direction of flow 3-4 / 2-1

Dimensions▼ **Proportional valves direct acting spool 4-way 3-position****Bosch Rexroth Oil Control S.p.A.**

Via Leonardo da Vinci 5
P.O. Box no. 5
41015 Nonantola – Modena, Italy
Tel. +39 059 887 611
Fax +39 059 547 848
compact-hydraulics-cv@boschrexroth.com
www.boschrexroth.com/compacthydraulics

© This document, as well as the data, specifications and other information set forth in it, are the exclusive property of Bosch Rexroth Oil Control S.p.A.. It may not be reproduced or given to third parties without its consent. The data specified above only serve to describe the product. No statements concerning a certain condition or suitability for a certain application can be derived from our information. The information given does not release the user from the obligation of own judgment and verification. It must be remembered that our products are subject to a natural process of wear and aging. Subject to change.