

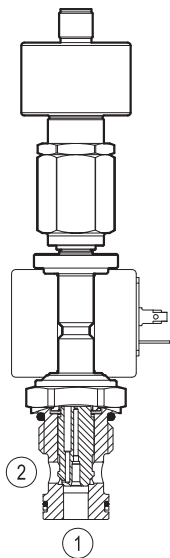
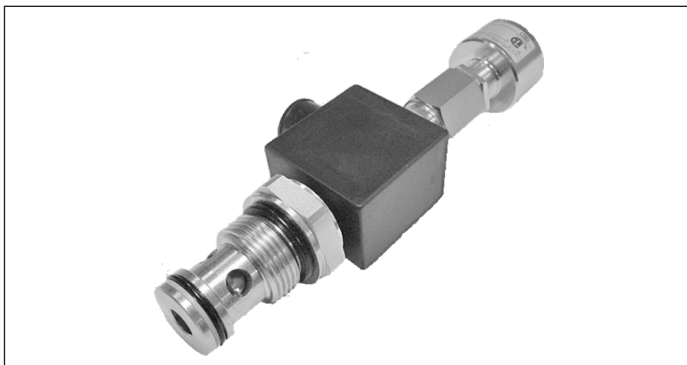
# Solenoid operated valves pilot operated poppet type 2-way normally open proximity sensor Special cavity, 017-E

**RE 18325-09**

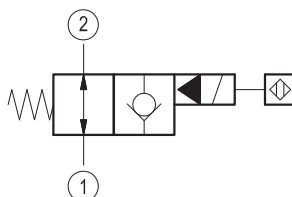
Edition: 10.2020

VEI-8A-2A-09-NA-S-M-NSS

OD.15.06.17.1D.S2 - Z



## ▼ Version 06



## Technical data

General		
Weight		0.75 kg (1.65 lbs)
Installation orientation		Optional
Ambient temperature range		-25 to 60 °C (-13 to 140 °F)
Hydraulic		
Max. operating pressure		350 bar (5000 psi)
Flow range		3.5 - 70 l/min (1 - 18 gpm)
Max. internal leakage		15 drops/min.
Fluid temperature range		-20 to 80 °C (-4 to 176 °F)
Fluids: Mineral-based or synthetics with lubricating properties at viscosities of 15 to 380 mm²/s (cSt)		
Installation torque		50 - 55 Nm (37 - 41 ft-lbs)
Recommended degree of fluid contamination		Nominal value max. 10 µm (NAS 8) ISO 4406 19/17/14
MTTFD		150 years see RE 18350-51
Special cavity		017-E see 18325-75
Lines bodies and standard assemblies		Please refer to section “Hydraulic integrated circuit” or consult factory
Seal kit – version 06	code	RG17E201052010
	material no.	R934003562
Other technical data		See data sheet 18350-50
Electrical		
Type of voltage		DC voltage
Coil type		S8-356 see 18325-90
Supply voltage		See data sheet 18325-90
Nominal voltage		± 10%
Power consumption		20 W
Duty cycle coil		100 % see 18325-90
Type of protection		See data sheet 18325-90

Please consider that a proper function of the valve is guaranteed only if the position of the monitor is not modified; each cartridge is provided of a torque confirmation mark, intended as anti-tampering device.

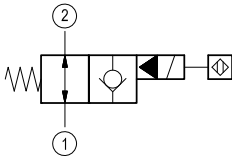
Sensor is protected against short circuit polarity inversion.

\* For more details contact factory

Ordering code

<b>OD.15</b>	<b>06</b>	<b>17</b>	<b>1DS2</b>	<b>Z</b>
--------------	-----------	-----------	-------------	----------

Solenoid operated valves  
pilot operated poppet type  
2-way normally open proximity sensor



OB    12 V DC

OC    24 V DC

Note: please consult factory for  
different voltages.

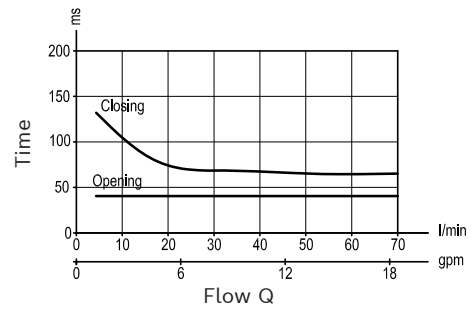
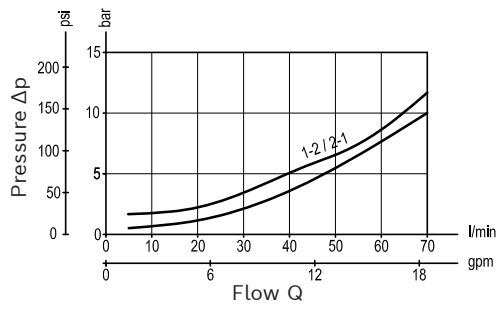
Special cavity: 017-E

Type	Material number
OD1506171DS2OC	R934001206

Type	Material number

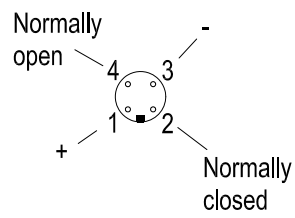
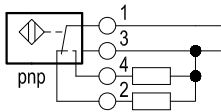
## Characteristic curves

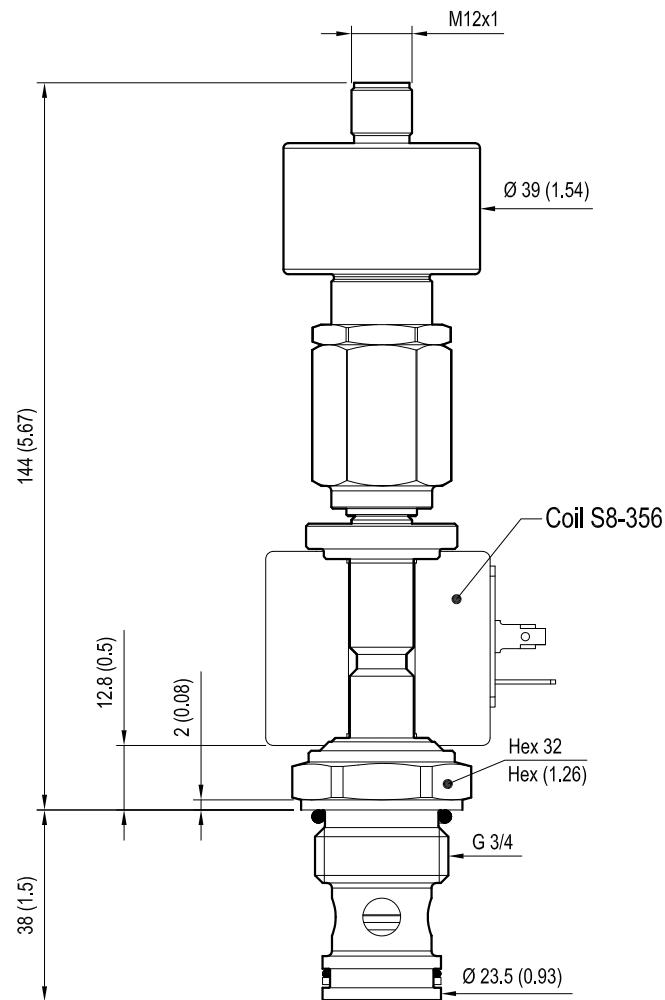
### Version 06



### Sensor data:

	12 V DC	24 V DC
Supply voltage	10.5 to 16	20 to 32
Output load	≤ 400 mA	≤ 400 mA



**Dimensions**▼ **Version 06: Solenoid operated valve, poppet 2-way  
normally open proximity sensor****Bosch Rexroth Oil Control S.p.A.**

Via Leonardo da Vinci 5  
P.O. Box no. 5  
41015 Nonantola – Modena, Italy  
Tel. +39 059 887 611  
Fax +39 059 547 848  
compact-hydraulics-cv@boschrexroth.com  
www.boschrexroth.com/compacthydraulics

© This document, as well as the data, specifications and other information set forth in it, are the exclusive property of Bosch Rexroth Oil Control S.p.A.. It may not be reproduced or given to third parties without its consent. The data specified above only serve to describe the product. No statements concerning a certain condition or suitability for a certain application can be derived from our information. The information given does not release the user from the obligation of own judgment and verification. It must be remembered that our products are subject to a natural process of wear and aging. Subject to change.