

# Solenoid operated valves pilot operated poppet type 2-way normally open double lock proximity sensor Special cavity, 017-E

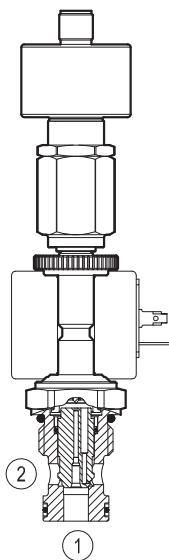
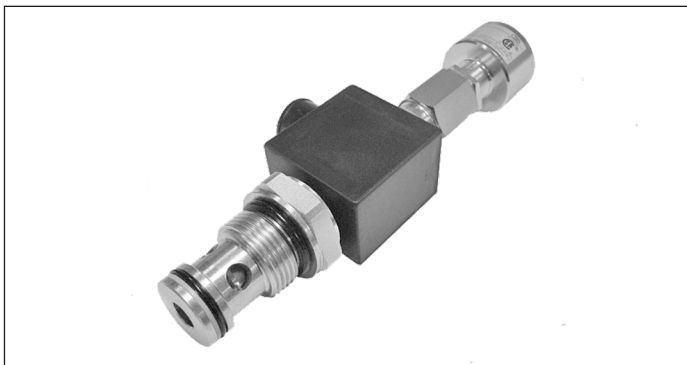
VEI-8A-2T-09-NA-S-M-NSS

OD.15.32.17.1D.S2 - Z

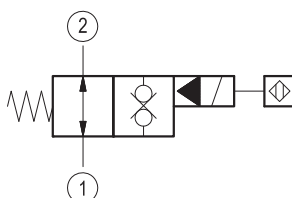
**RE 18325-15**

Edition: 03.2020

Replaces: 01.2016



▼ Version 32



## Technical data

General		
Weight		0.75 kg (1.7 lbs)
Installation orientation		Optional
Ambient temperature range		-25 to 60 °C (-13 to 140 °F)
Hydraulic		
Max. operating pressure		350 bar (5000 psi)
Flow range		2.5 - 70 l/min (0.66 - 18 gpm)
Max. internal leakage		15 drops/min.
Fluid temperature range		-20 to 80 °C (-4 to 176 °F)
Fluids: Mineral-based or synthetics with lubricating properties at viscosities of 15 to 380 mm²/s (cSt)		
Installation torque		50 - 55 Nm (37 - 41 ft-lbs)
Recommended degree of fluid contamination		Nominal value max. 10 µm (NAS 8) ISO 4406 19/17/14
MTTFD		150 years see RE 18350-51
DC		90% * according to ISO 13849-1/2
Special cavity		017-E see 18325-70
Lines bodies and standard assemblies		Please refer to section “Hydraulic integrated circuit” or consult factory
Seal kit – version 32	code material no.	RG17E201053010 R934003563
Other technical data		See data sheet 18350-50
Electrical		
Type of voltage		DC voltage
Coil type		S8-356 see 18325-90
Supply voltage		See data sheet 18325-90
Nominal voltage		± 10%
Power consumption		20 W
Duty cycle coil		100 % see 18325-90
Type of protection		See data sheet 18325-90

Please consider that a proper function of the valve is guaranteed only if the position of the monitor is not modified; each cartridge is provided of a torque confirmation mark, intended as anti-tampering device.

Sensor is protected against short circuit polarity inversion.

\* For more details contact factory

Ordering code

OD.15

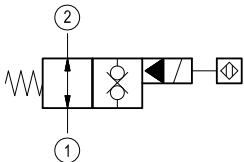
32

17

1DS2

Z

Solenoid operated valves  
pilot operated poppet type  
2-way normally open double lock proximity sensor



OC 24 V DC

Note: please consult factory for  
different voltages.

Special cavity: 017-E

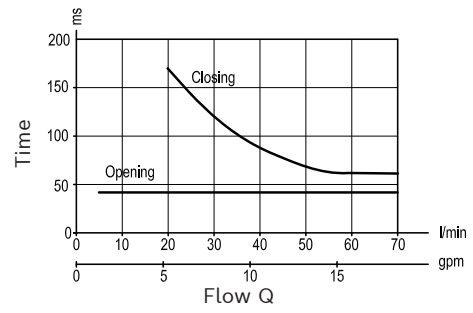
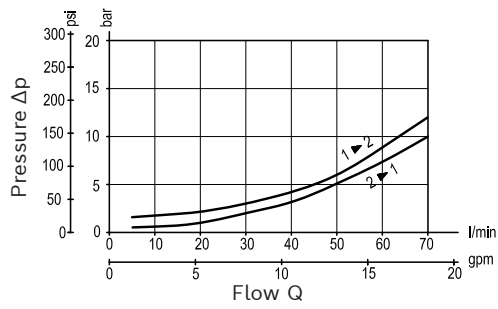
Type	Material number
OD1532171DS2OC	R934001235

Type	Material number

Bosch Rexroth Oil Control S.p.A., RE 18325-15/03.2020

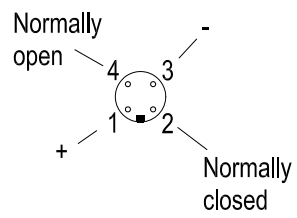
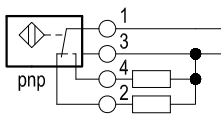
## Characteristic curves

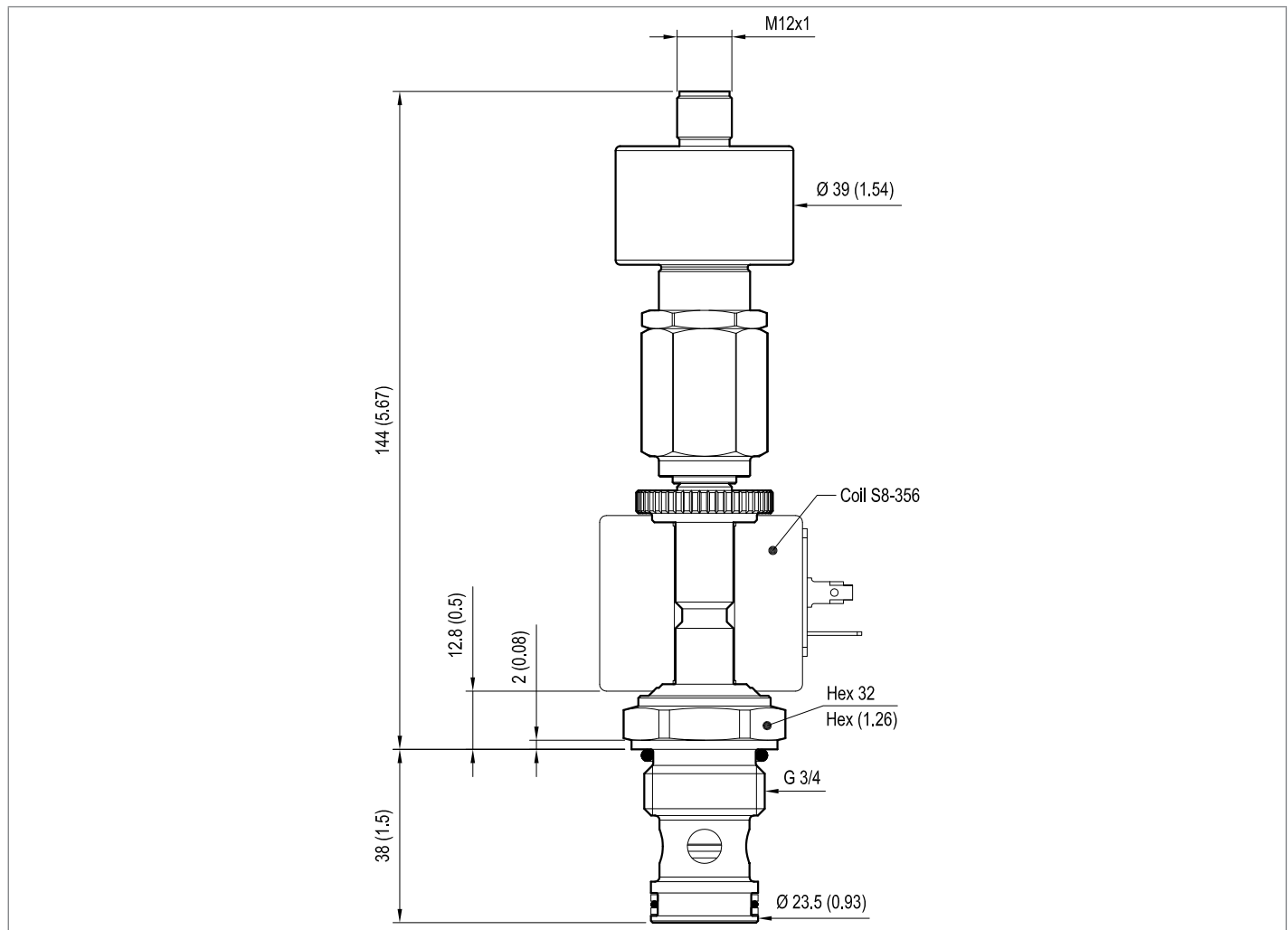
### Version 32



### Sensor data:

	24 V DC
Supply voltage	20 to 32
Output load	$\leq 400$ mA



**Dimensions**▼ **Version 32: Solenoid operated valve, poppet 2-way  
normally open double lock proximity sensor****Bosch Rexroth Oil Control S.p.A.**

Via Leonardo da Vinci 5  
P.O. Box no. 5  
41015 Nonantola – Modena, Italy  
Tel. +39 059 887 611  
Fax +39 059 547 848  
compact-hydraulics-cv@boschrexroth.com  
www.boschrexroth.com/compacthydraulics

© This document, as well as the data, specifications and other information set forth in it, are the exclusive property of Bosch Rexroth Oil Control S.p.A.. It may not be reproduced or given to third parties without its consent. The data specified above only serve to describe the product. No statements concerning a certain condition or suitability for a certain application can be derived from our information. The information given does not release the user from the obligation of own judgment and verification. It must be remembered that our products are subject to a natural process of wear and aging. Subject to change.