

Directional control valves hydraulic operated poppet 2-way normally closed Common cavity, Size 08

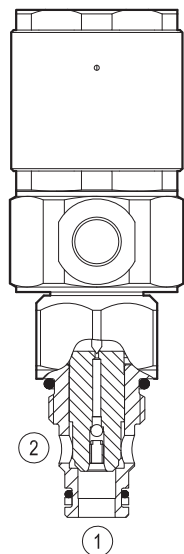
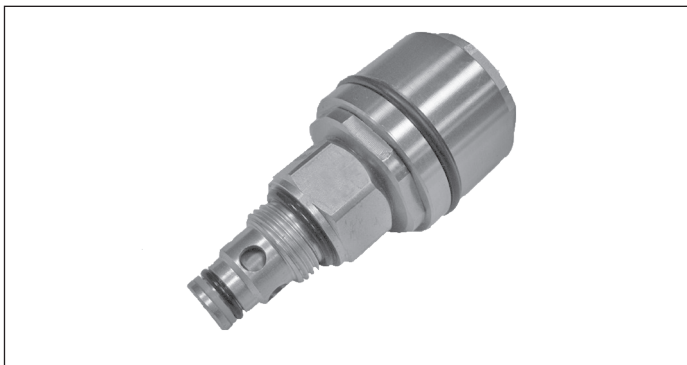
VOI-8A-2A-06-NC

OD.75 - X - 18 - 17 - 00

RE 18326-40

Edition: 01.2010

Replaces: 01.2006

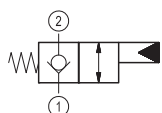


Technical data

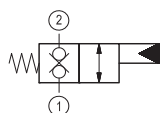
General	
Weight	0.27 kg (0.6 lbs)
Installation orientation	Optional
Ambient temperature range	-30 to 60 °C (-22 to 140 °F)
Hydraulic	
Max. operating pressure	350 bar (5000 psi)
Max. flow	40 bar (11 psi)
Max. internal leakage	20 drops/min.
Fluid temperature range	-20 to 80 °C (-4 to 176 °F)
Fluids: Mineral-based or synthetics with lubricating properties at viscosities of 20 to 380 mm ² /s (cSt)	
Installation torque	39 - 51 Nm (29 - 38 ft-lbs)
Recommended degree of fluid contamination	Nominal value max. 25 µm (NAS 8) ISO 4406 19/17/14
Cavity	CA-08A-2N see 18325-70
Lines bodies and standard assemblies	Please refer to section "Hydraulic integrated circuit" or consult factory
Seal kit – version 05	code RG08A2010520100 material no. R901101437
Seal kit – version 31	code RG08A2010530100 material no. R901101544
Other technical data	See data sheet 18350-50

IMPORTANT: When valve is not operated, flow from 1 to 2 is not recommended due to high opening pressure. (version 05)

▼ Version 05



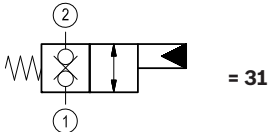
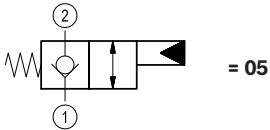
▼ Version 31



Ordering code

OD.75	X	18	17	00
--------------	----------	-----------	-----------	-----------

Directional control valves
hydraulic operated poppet
2-way normally closed



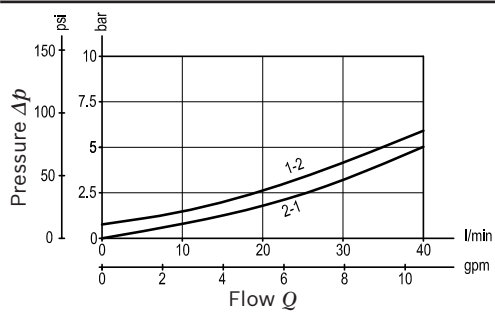
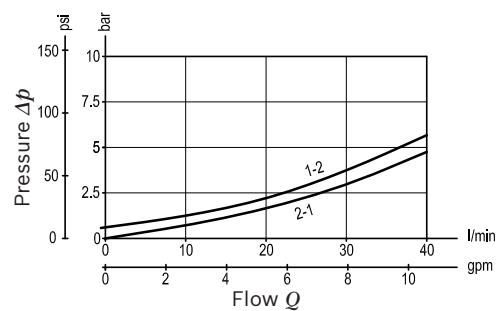
Pilot pressure		
	Min. bar (psi)	Max. bar (psi)
14	2-3 (29-44)	15 (218)
34	15-20 (218-290)	50 (725)

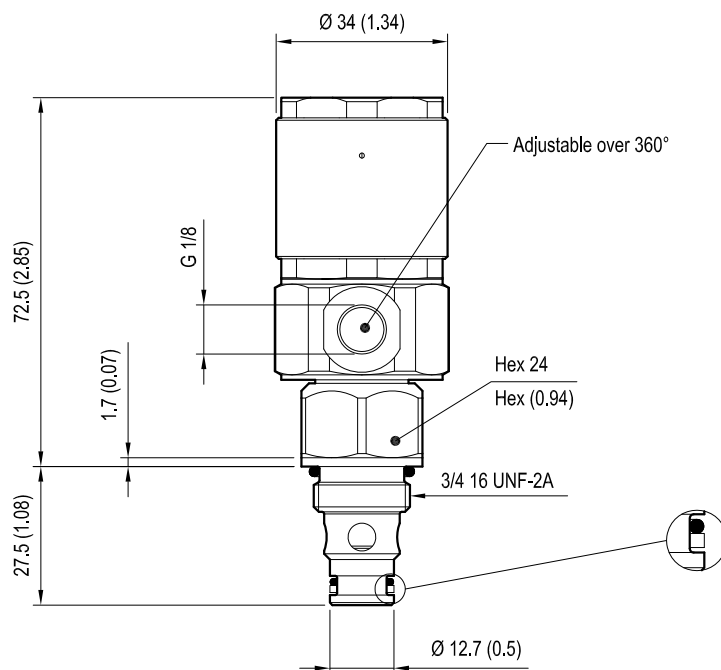
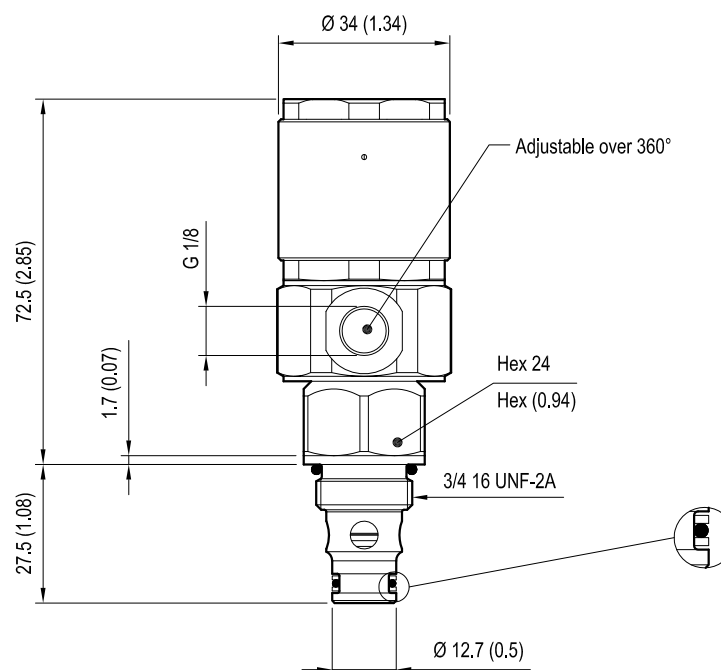
Common cavity: CA-08A-2N

Preferred types

Type	Material number
OD750518140000	R901109467
OD750518340000	R901109471

Type	Material number
OD753118140000	R901109472
OD753118340000	R901109473

Characteristic curves**Version 05****Version 31**

Dimensions**▼ Version 05: Directional control valves hydraulic operated poppet 2-way normally closed****▼ Version 31: Directional control valves hydraulic operated poppet 2-way double lock normally closed****Bosch Rexroth Oil Control S.p.A.**

Via Leonardo da Vinci 5
P.O. Box no. 5
41015 Nonantola – Modena, Italy
Tel. +39 059 887 611
Fax +39 059 547 848
compact-hydraulics-cv@boschrexroth.com
www.boschrexroth.com/compacthydraulics

© This document, as well as the data, specifications and other information set forth in it, are the exclusive property of Bosch Rexroth Oil Control S.p.A.. It may not be reproduced or given to third parties without its consent. The data specified above only serve to describe the product. No statements concerning a certain condition or suitability for a certain application can be derived from our information. The information given does not release the user from the obligation of own judgment and verification. It must be remembered that our products are subject to a natural process of wear and aging. Subject to change.