

Insert type Relief, direct acting and anti-cavitation function

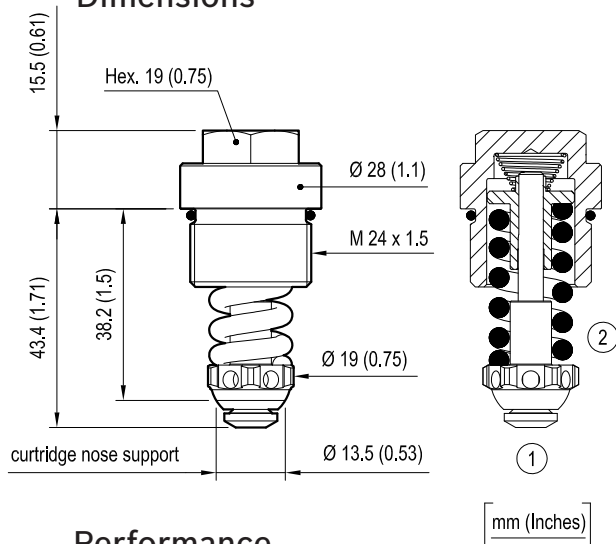
Special cavity, 924

VMA1.130

0T.M4.10 - X - 99 - Z - W



Dimensions

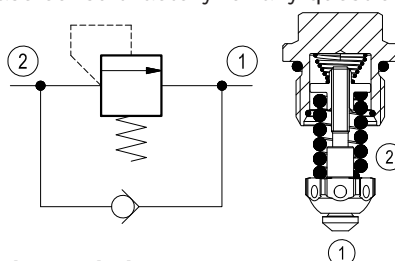


Description

Flow is free from 1 to 2 until pressure increases to meet the selected valve setting, allowing relief flow through port 1 to tank. This valve combine the typical function of shock relief valve (direct acting) and anticavitation function through the check valve. The direct action and the specific design allow a very fast opening and closing.

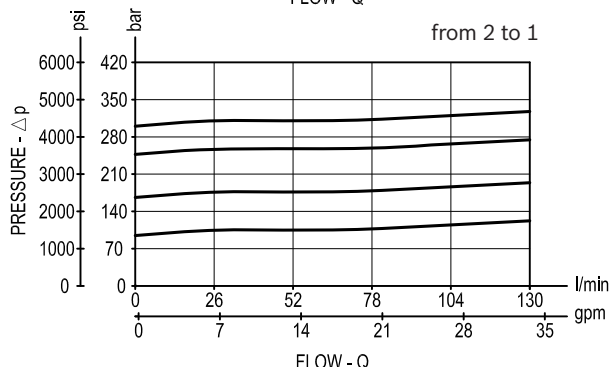
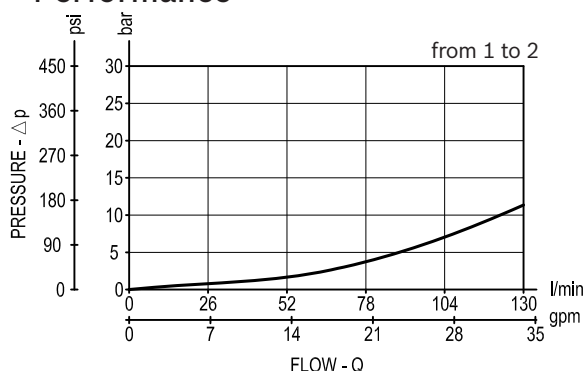
Note: to obtain a good leak proof performance coin the cavity seat using a loose valve seat (P/N 0F.S0.083) as a coining tool.

Please consult factory for any question.



VMA7.130 version with retainer ring available by request fitting slightly different cavity of VMA1.130

Performance



Technical data

Max. operating pressure	bar (psi)	400 (5800)
Max. flow	l/min. (gpm)	130 (34)
Max. internal leakage (*)	drops/min.	30
Fluid temperature range	°C (°F)	-30 to 100 (-22 to 212)
Installation torque	Nm (ft-lbs)	65-70 (48-52)
Weight	kg (lbs)	0.12 (0.27)
MTTFD		150 years see RE 18350-51
Special cavity		924 see data sheet RE 18325-75
Lines bodies and standard assemblies		Please refer to section "Hydraulic integrated circuit" or consult factory
Seal kit (**)	code material no.	RG0870020000100 R931002407
Fluids		Mineral-based or synthetics with lubricating properties at viscosities of 10 to 500 mm ² /s (cSt)
Recommended degree of fluid contamination		Nominal value max. 10µm (NAS 8) ISO 4406 20/18/15
Installation		No restrictions
Other Technical Data		See data sheet RE 18350-50

(*) at 80% of pressure setting

(**) Only external seals for 10 valves

Ordering code

OT.M4.10	X	99	Z	W	*
----------	---	----	---	---	---

Insert type - Relief, direct acting and anti-cavitation function

Adjustments

= 00 Fixed setting

Special cavity, 924

Series O/A to L
unchanged performances and dimensions

SPRINGS	
Adj. pressure range bar (psi)	
20-100 (300-1500)	= 05
100-180 (1500-2600)	= 10
180-250 (2600-3600)	= 20
250-300 (3600-4400)	= 30
300-400 (4400-5800)	= 35

	Std. SETTING bar (psi) Q=10 l/min (2.6 gpm)				
	for Z=05	for Z=10	for Z=20	for Z=30	for Z=35
= 02	20 (290)	110 (1600)	190 (2760)	260 (3770)	310 (4500)
= 03	30 (440)	120 (1750)	200 (2900)	270 (3920)	320 (4640)
= 04	40 (580)	130 (1890)	210 (3050)	280 (4060)	330 (4790)
= 05	50 (730)	140 (2030)	220 (3190)	290 (4210)	340 (4930)
= 06	60 (870)	150 (2180)	230 (3340)	300 (4350)	350 (5080)
= 07	70 (1020)	160 (2320)	240 (3480)		360 (5220)
= 08	80 (1160)	170 (2470)	250 (3630)		370 (5370)
= 09	90 (1300)	180 (2610)			380 (5510)
= 10	100 (1450)				390 (5660)
= 11					400 (5800)

Type	Material number
OTM410009905020	R931002246
OTM410009905030	R931002247
OTM410009905040	R931002248
OTM410009905050	R931001860
OTM410009905060	R931002253
OTM410009905070	R931001861
OTM410009905080	R931001864
OTM410009905090	R931002254
OTM410009905100	R931002089
OTM410009910020	R931002255
OTM410009910030	R931001587
OTM410009910040	R931002256
OTM410009910050	R931001869
OTM410009910060	R931002257
OTM410009910070	R931001870
OTM410009910080	R931001600
OTM410009910090	R931002090
OTM410009920020	R931002258
OTM410009920030	R931002259
OTM410009920040	R931001871

Type	Material number
OTM410009920050	R931001659
OTM410009920060	R931002260
OTM410009920070	R931002261
OTM410009920080	R931002262
OTM410009930020	R931002263
OTM410009930030	R931001727
OTM410009930040	R931002264
OTM410009930050	R931002265
OTM410009930060	R931002266
OTM410009935020	R931002267
OTM410009935030	R931001779
OTM410009935040	R931002268
OTM410009935050	R931002269
OTM410009935060	R931002270
OTM410009935070	R931002271
OTM410009935080	R931001872
OTM410009935090	R931001780
OTM410009935100	R931002272
OTM410009935110	R931002273

Bosch Rexroth Oil Control S.p.A.
Via Leonardo da Vinci 5
P.O. Box no. 5
41015 Nonantola – Modena, Italy
Tel. +39 059 887 611
Fax +39 059 547 848

compact-hydraulics-cv@boschrexroth.com
www.boschrexroth.com/compacthydraulics

© This document, as well as the data, specifications and other information set forth in it, are the exclusive property of Bosch Rexroth Oil Control S.p.A.. It may not be reproduced or given to third parties without its consent.

The data specified above only serve to describe the product. No statements concerning a certain condition or suitability for a certain application can be derived from our information. The information given does not release the user from the obligation of own judgment and verification. It must be remembered that our products are subject to a natural process of wear and aging.
Subject to change.